

Maximum Ratings

Parameters Description	Unit	Minimum	Typical	Maximum
Operating Temperature Range	°C	-30	-	+70
Storage Temperature Range	°C	-40	-	+85
Maximum DC Voltage	V	-	-	10
Maximum Input Power	dBm	-	-	10
Source Impedance (single ended) ⁽¹⁾	Ω	-	50	-
Load Impedance (single ended) ⁽¹⁾	Ω	-	50	-
Package type & size	V			
Length x Width	mm ²	-	13.3 x 6.5	-
Height	mm	-	-	1.8

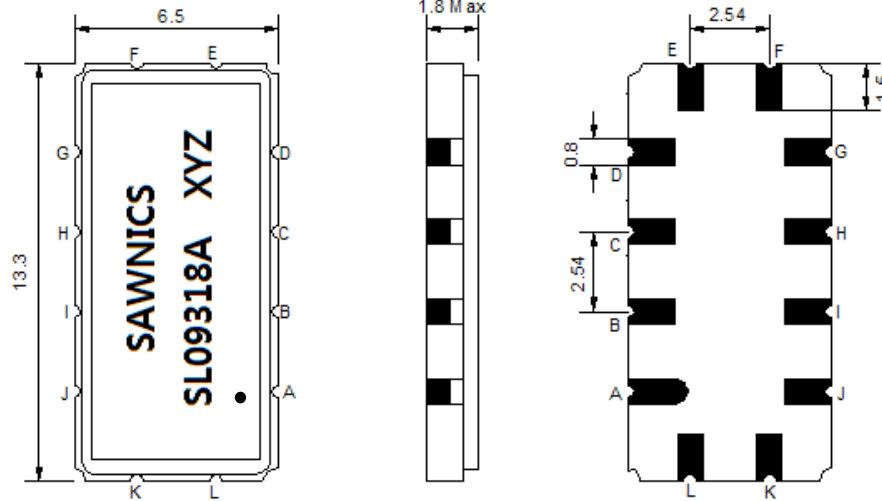
Electrical Specification

Parameters Description	Unit	Minimum	Typical	Maximum
Center Frequency (Fo)	MHz	-	93.75	-
Insertion Loss at Fo	dB	-	11.60	13.50
Group Delay Variation at Fo ± 7.48 MHz	nsec	-	25	60
Absolute Delay at Fo	usec	-	0.91	1.10
Passband Ripple Variation at Fo ± 7.48 MHz	dB	-	0.25	0.80
Bandwidth at -1dB	MHz	-	18.03	-
Bandwidth at -3dB	MHz	-	18.90	-
Bandwidth at -40dB	MHz	-	22.96	-
Ultimate Rejection	dB	40	47	-
Temperature Coefficient	ppm/°C	-	-86	-

Notes : (1) With Matching Network (Ref. Testing Environment Circuit as shown below).

Those impedances could be modified with different impedance values and/or structures, if necessary.

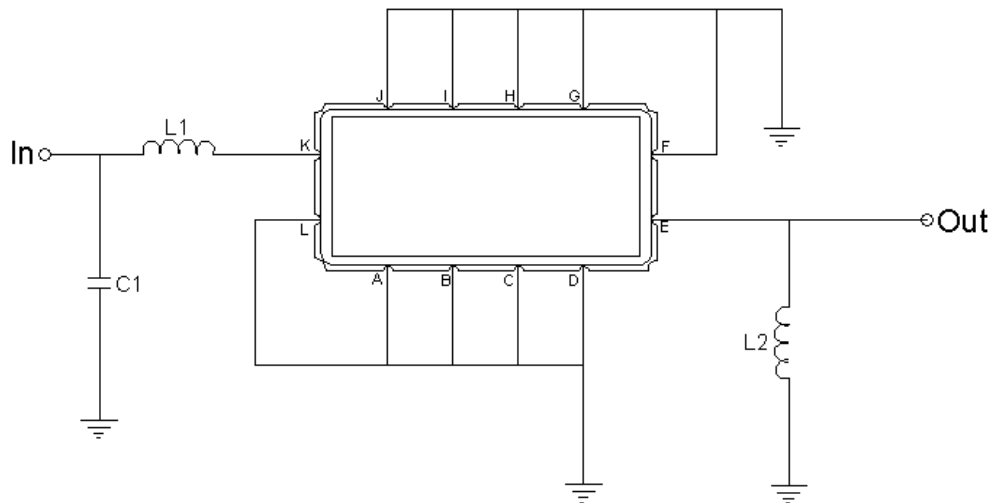
Package Dimensions



- ① SAWNICS: Brand
- ② SL09318A: Model Name
- ③ X : Date Code (Year)
- ④ Y : Date Code (Month)
- ⑤ Z : Date Code (Date)
- : Index Dot

Pin Description	
A, B, C, D, F, G, H, I, J, L	Ground
K	Input
E	Output

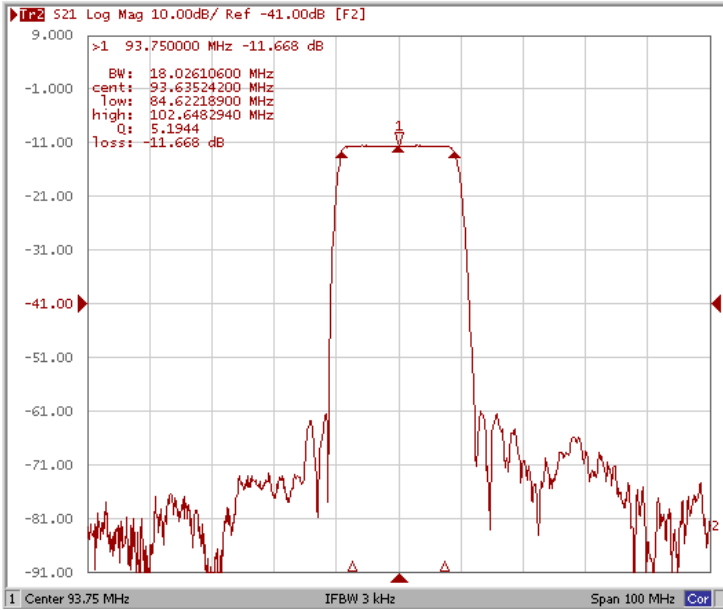
Testing Environment



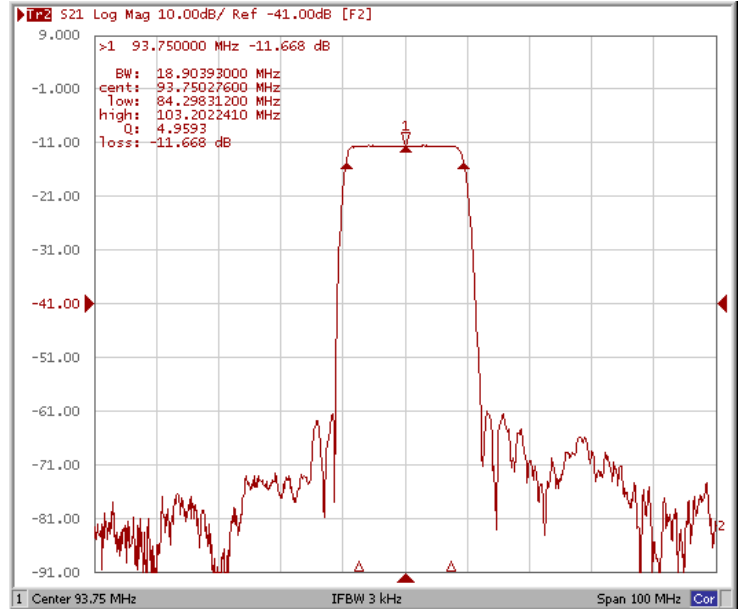
Test Fixture & Values	
Input	L1 = 82nH, C1 = 27pF
Output	L2 = 68nH,
Source/Load Impedance	50 Ω

Frequency Response

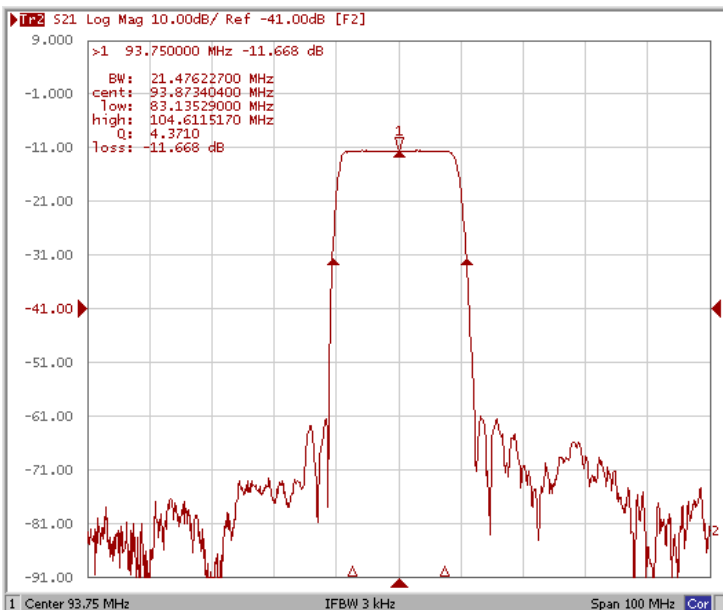
Bandwidth at -1.0 dB



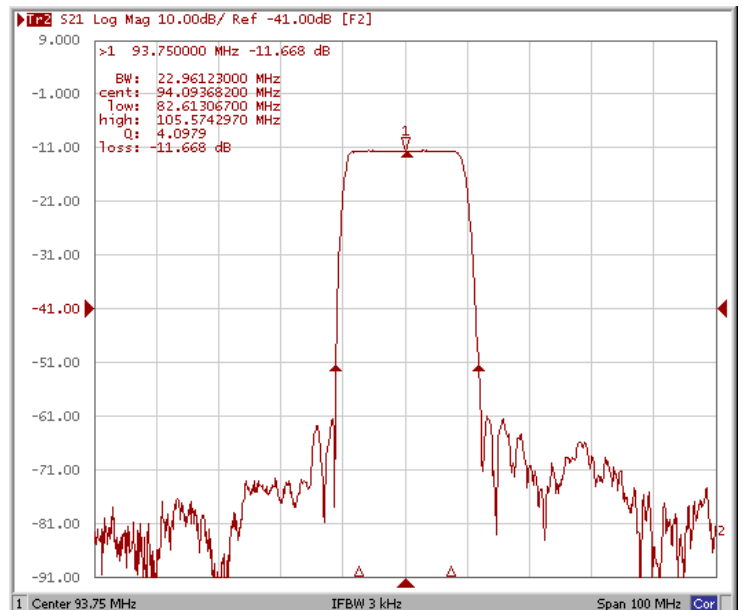
Bandwidth at -3.0 dB



Bandwidth at -20 dB

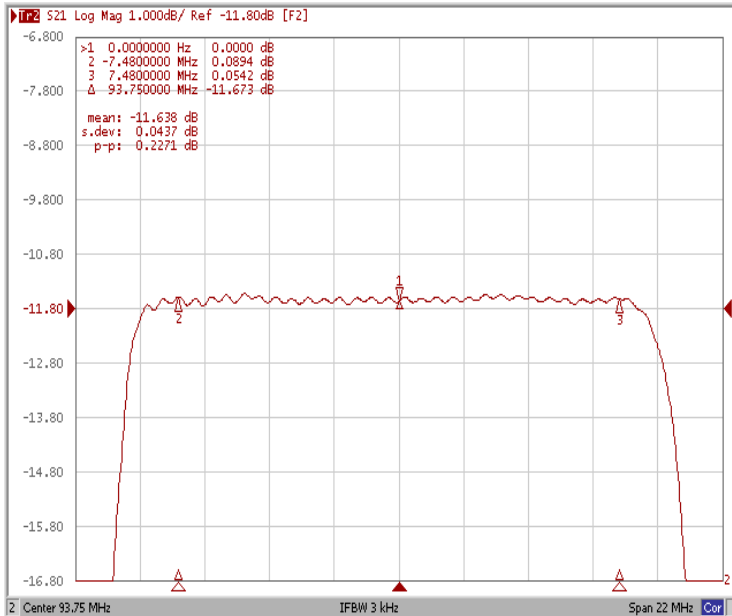


Bandwidth at -40 dB

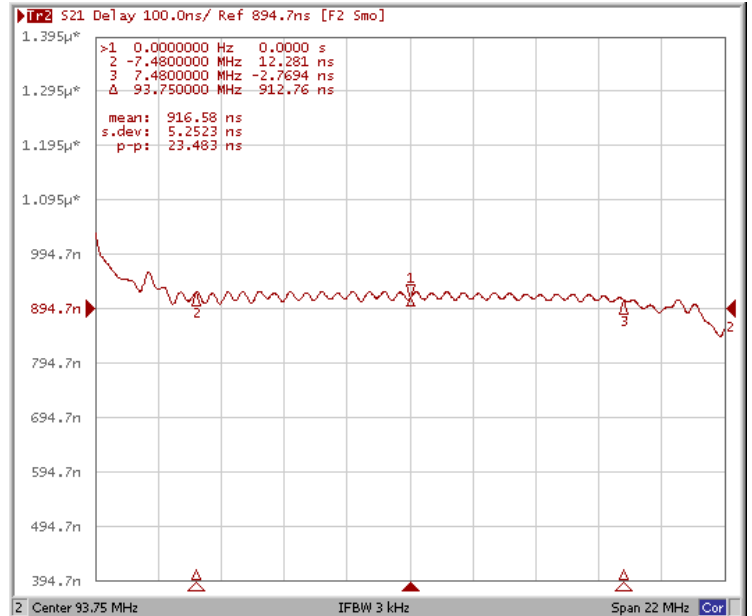


Frequency Response

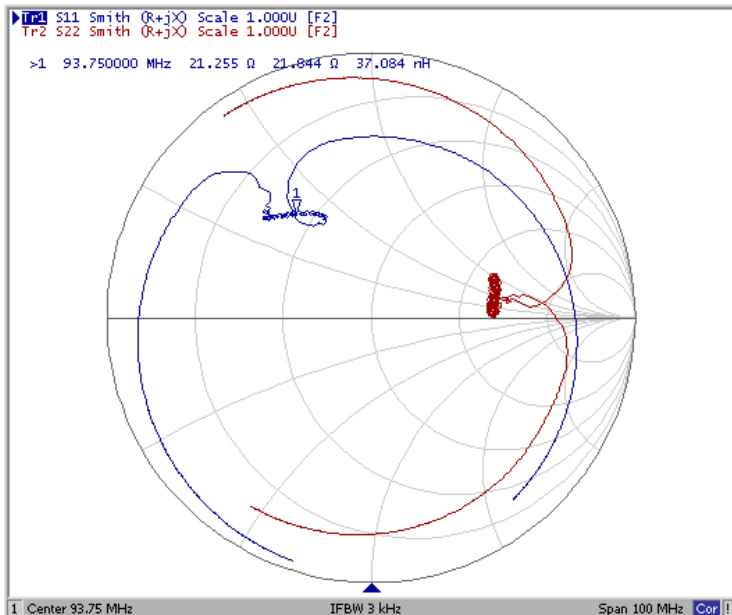
Ripple Variation $F_{o\pm 7.48\text{MHz}}$



Group Delay Variation $F_{o\pm 7.48\text{MHz}}$



Smith Chart



VSWR

