

Maximum Ratings

Parameters Description	Unit	Minimum	Typical	Maximum
Operation Temperature Range	°C	-5	-	70
Storage Temperature Range	°C	-40	-	85
Maximum DC Voltage	V	-	-	10
Maximum Input Power	dBm	-	-	10
Source Impedance (single ended) ⁽¹⁾	Ω	-	50	-
Load Impedance (single ended) ⁽¹⁾	Ω	-	50	-
Package type & size	V			
Length x Width	mm ²	-	13.3 x 6.5	-
Height	mm	-	-	1.8

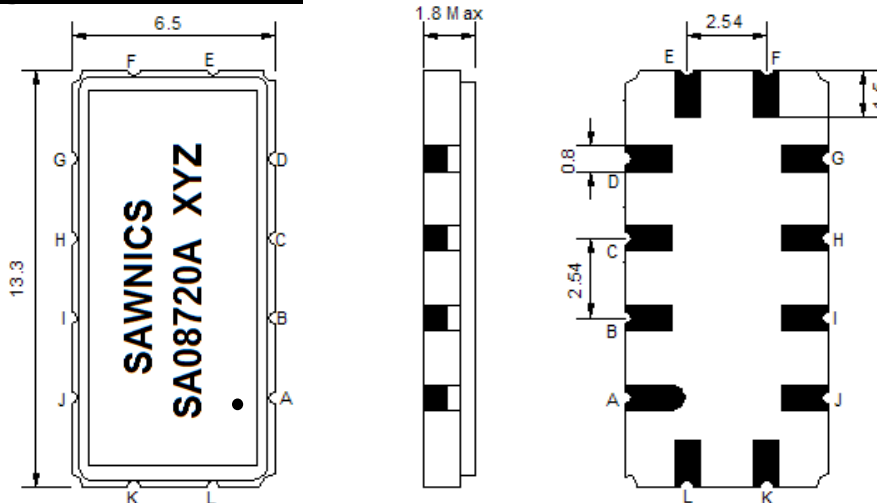
Electrical Specification

Parameters Description	Unit	Minimum	Typical	Maximum
Center Frequency (Fo)	MHz	87.35	87.50	87.65
Insertion Loss at Fo	dB	-	23.00	25.00
Group Delay Variation (Fo ± 9.42 MHz)	nsec	-	27	60
Absolute Delay at Fo	usec	-	1.61	1.80
Passband Ripple Variation (Fo ± 9.42 MHz)	dB	-	0.50	1.00
Bandwidth at -1dB	MHz	19.80	20.00	-
Bandwidth at -3dB	MHz	-	20.45	-
Bandwidth at -40dB	MHz	-	22.27	22.50
Ultimate Rejection	dB	45	48	-
Temperature Coefficient	ppm/°C	-	-72	-

Notes : (1) With Matching Network (Ref. Testing Environment Circuit as shown below).

Those impedances could be modified with different impedance values and/or structures, if necessary.

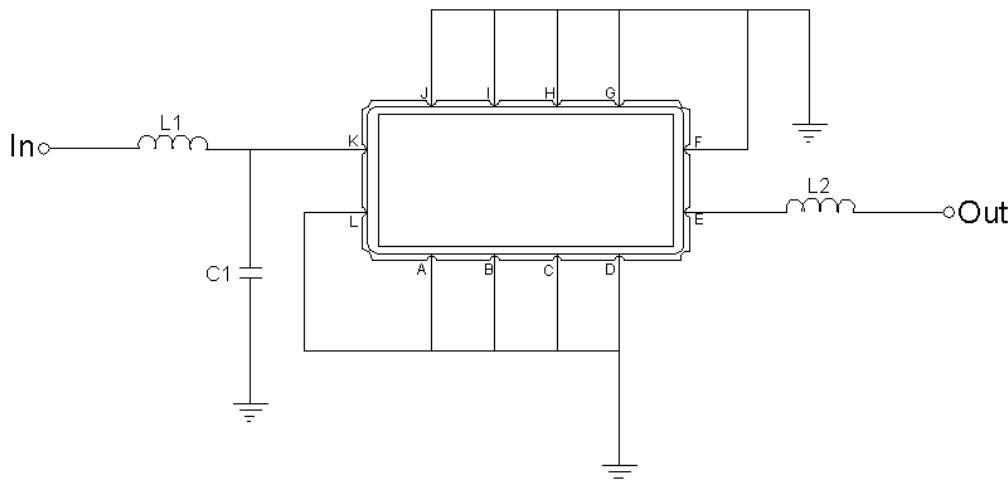
Package Dimensions



- ① SAWNICS: Brand
- ② SA08720A: Model Name
- ③ X : Date Code (Year)
- ④ Y : Date Code (Month)
- ⑤ Z : Date Code (Date)
- : Index Dot

Pin Description	
A, B, C, D, F, G, H, I, J, L	Ground
K	Input
E	Output

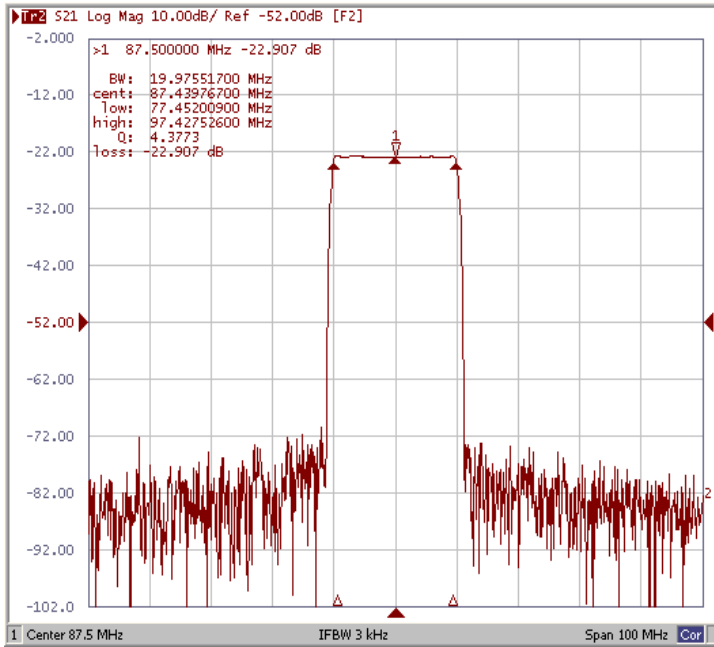
Testing Environment



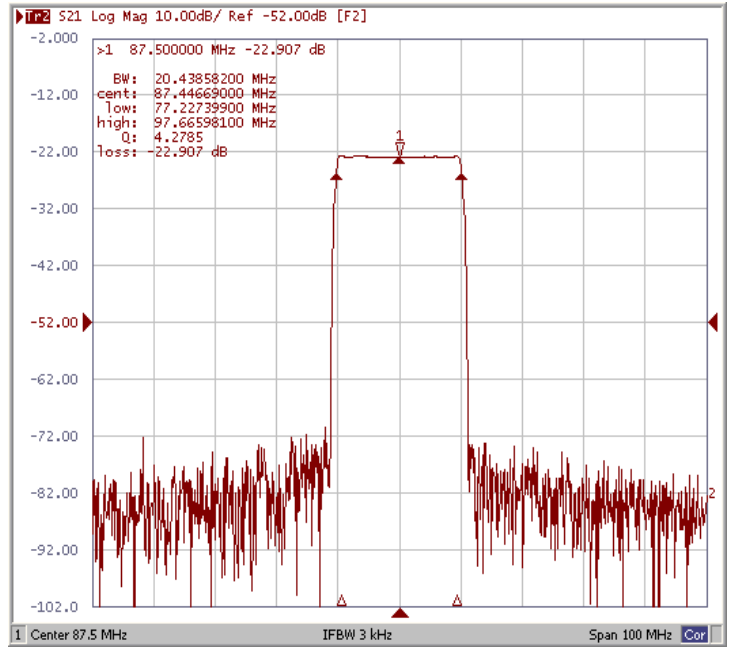
Test Fixture & Values	
Input	L1 = 120 nH, C2 = 11 pF
Output	L2 = 120 nH
Source/Load Impedance	50 Ω

Frequency Response

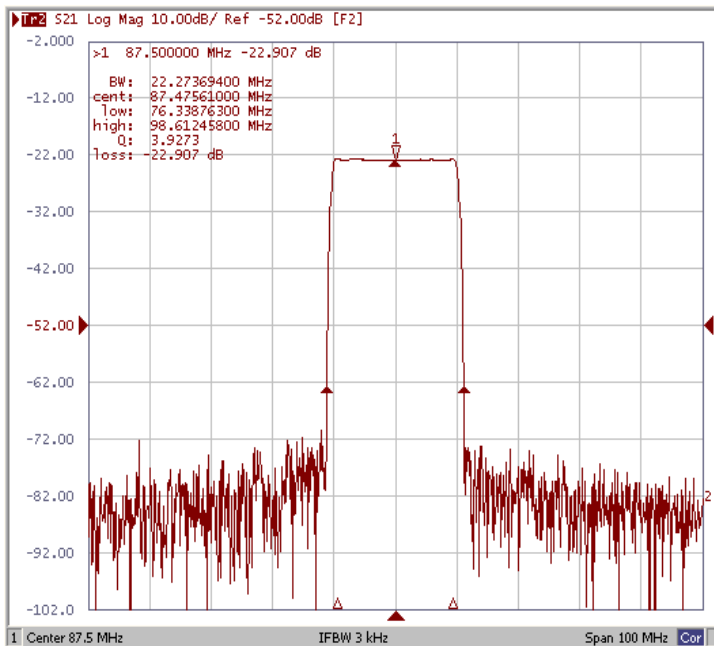
Bandwidth at -1.0 dB



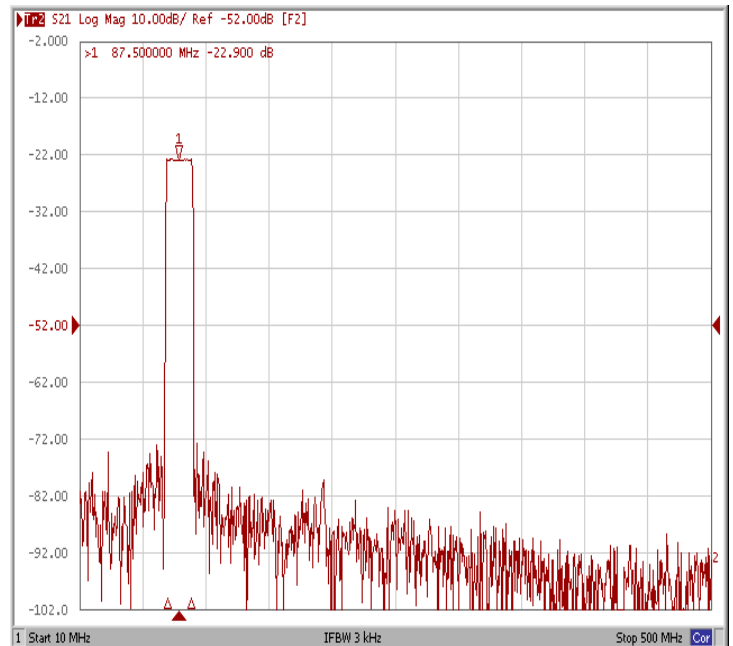
Bandwidth at -3.0 dB



Bandwidth at -40.0 dB

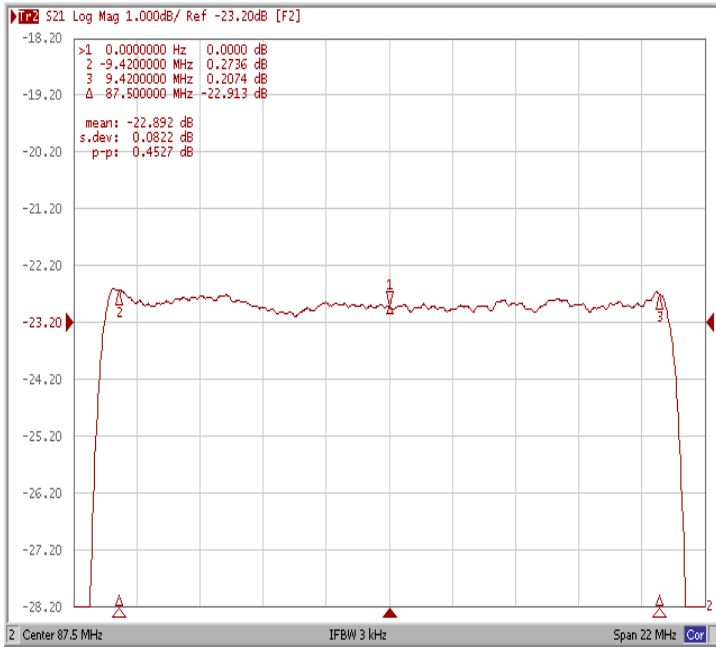


Wide-Band

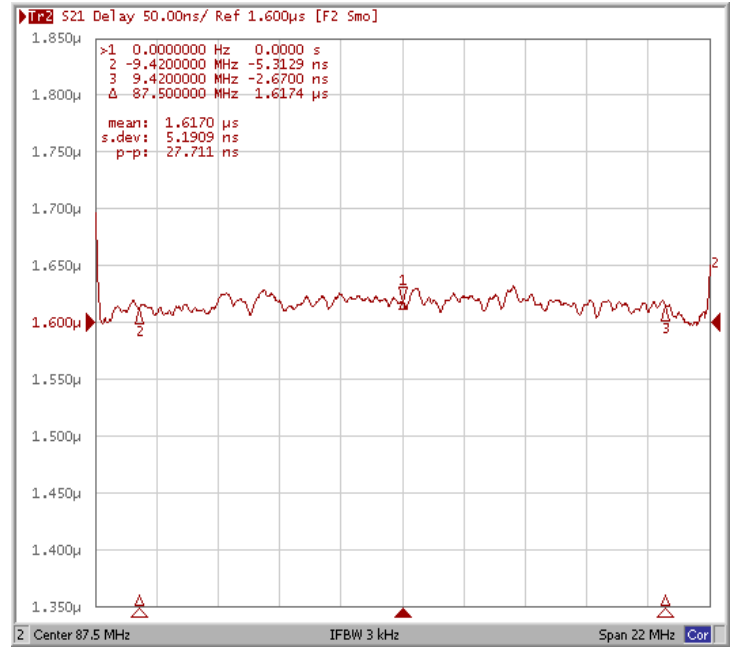


Frequency Response

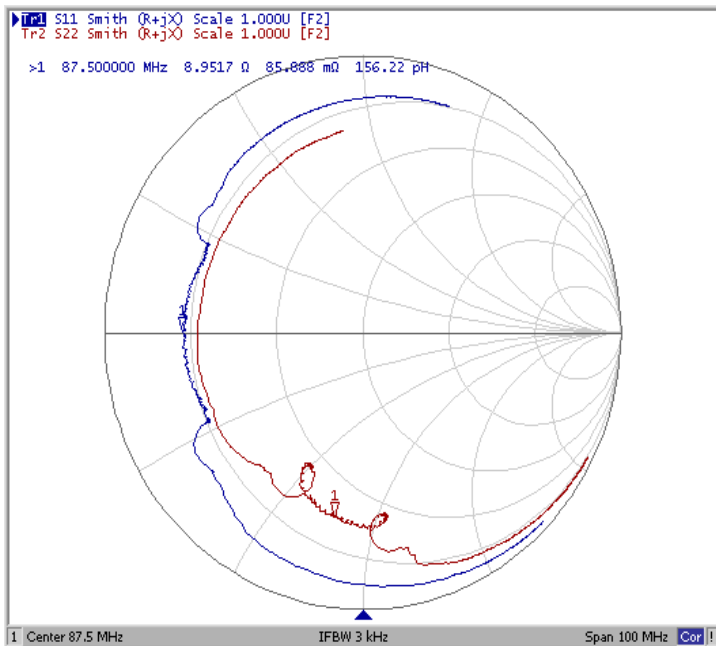
Ripple Variation $Fo \pm 9.42\text{MHz}$



Group Delay Variation $Fo \pm 9.42\text{MHz}$



Smith Chart



VSWR

