

## D Electrical Characteristics

### Maximum Ratings

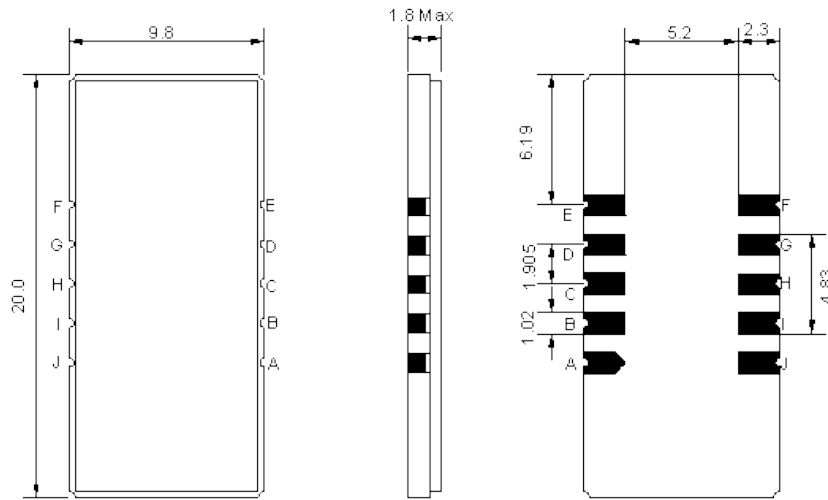
Parameters Description	Unit	Minimum	Typical	Maximum
Operation Temperature Range	°C	0	-	60
Storage Temperature Range	°C	-30	-	80
Maximum DC Voltage	V	-	-	10
Maximum Input Power	dBm	-	-	10
Source Impedance (single ended) <sup>(1)</sup>	Ω	-	50	-
Load Impedance (single ended) <sup>(1)</sup>	Ω	-	50	-
Package type & size	D1			
Length x Width	mm <sup>2</sup>	-	20.0 x 9.8	-
Height	mm	-	-	1.8

### Electrical Specification

Parameters Description	Unit	Minimum	Typical	Maximum
Center Frequency (Fo)	MHz	-	80.0	-
Insertion Loss at Fo	dB	-	23.0	25.0
Group Delay Variation (Fo±9.75MHz)	ns	-	36	80
Absolute Delay	us	-	2.38	-
Passband Ripple (Fo±9.75MHz)	dB	-	0.50	1.00
Bandwidth at -1dB	MHz	-	20.20	-
Bandwidth at -3dB	MHz	-	20.50	-
Bandwidth at -40dB	MHz	-	21.80	-
Ultimate Rejection	dB	-	52	-
Temperature coefficient	ppm/°C	-	-72	-

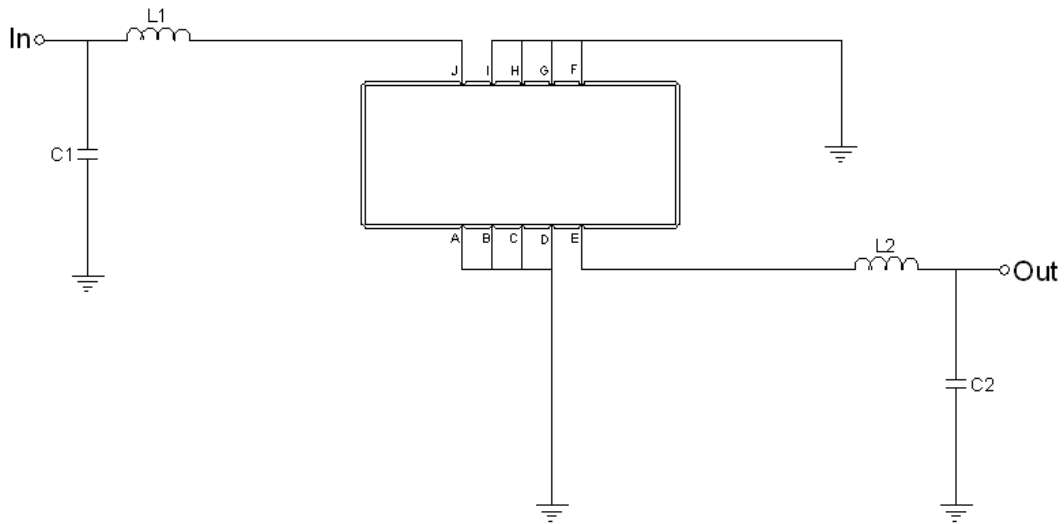
**Notes :** (1) With Matching Network (Ref. Testing Environment Circuit as shown below).  
Those impedances could be modified with different impedance values and/or structures, if necessary.

# D Package Dimensions



Pin Description	
A, B, C, D, F, G, H, I	Ground
J	Input
E	Output

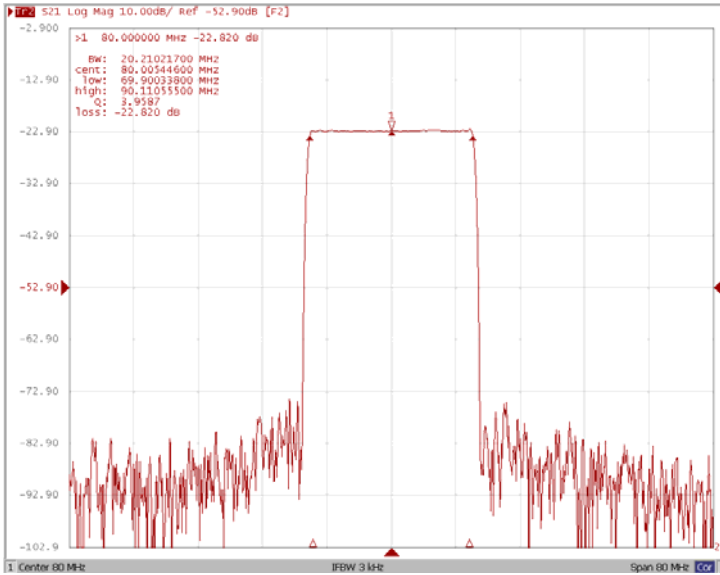
# D Testing Environment



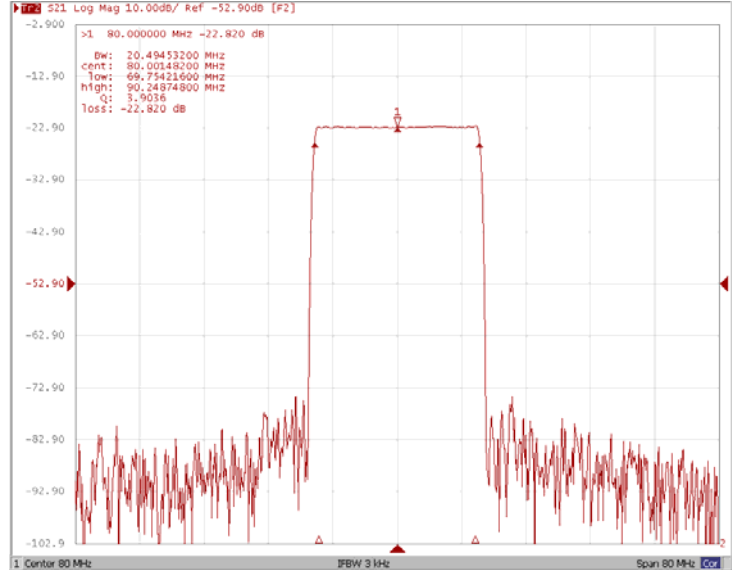
Test Fixture & Values	
Input	L1=120nH, C1=8.2pF
Output	L2=120nH, C2=15pF
Source/Load Impedance	50 Ω

## Frequency Response

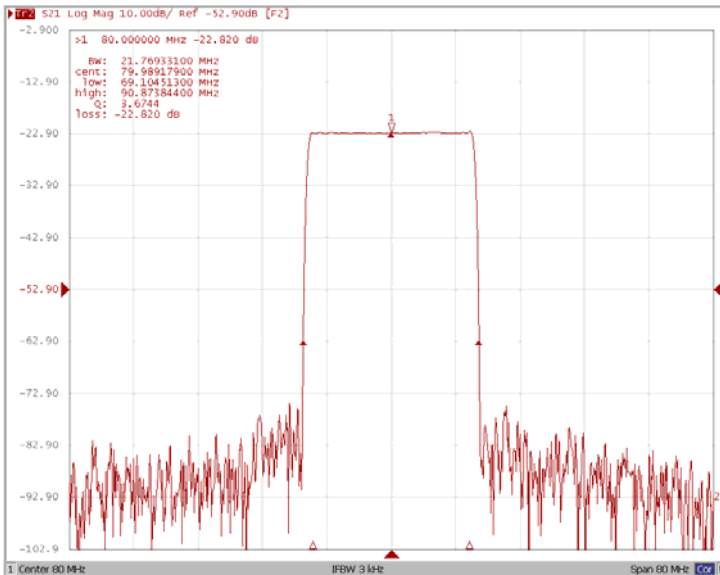
### Bandwidth at -1.0 dB



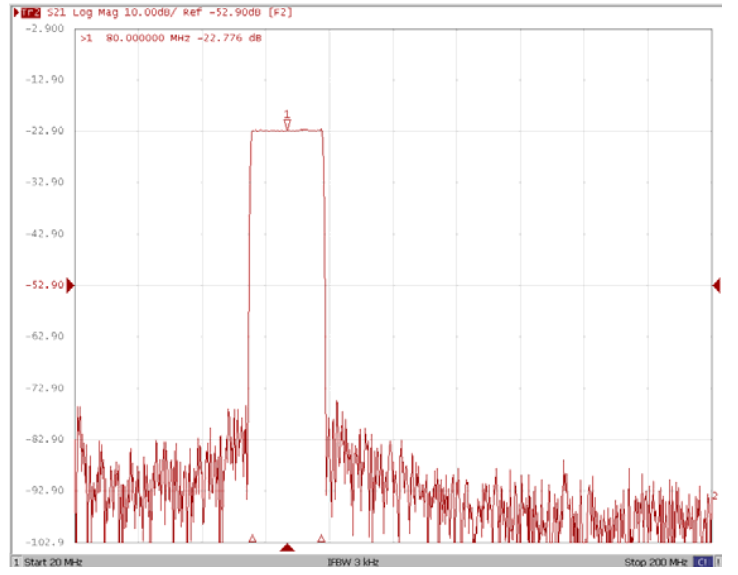
### Bandwidth at -3.0 dB



### Bandwidth at -40.0 dB

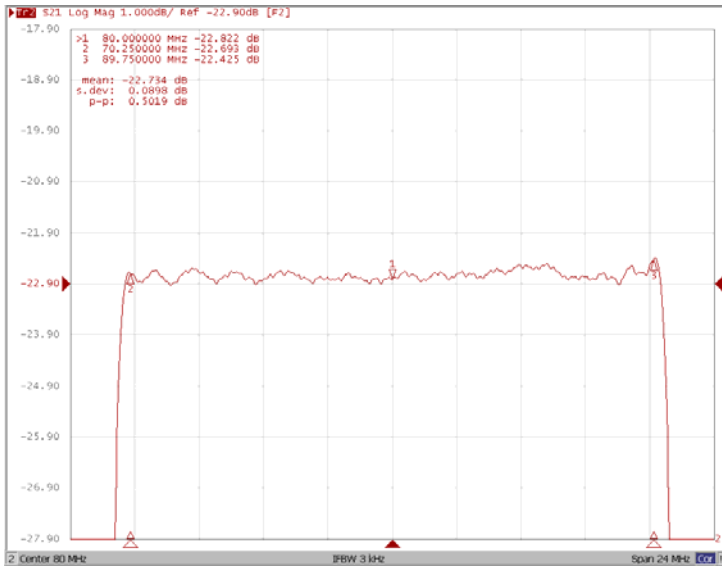


### Wide Band

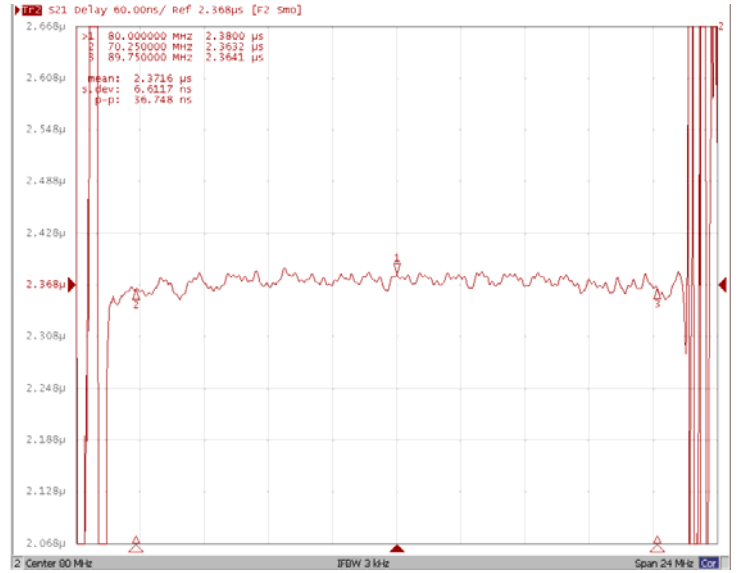


## Frequency Response

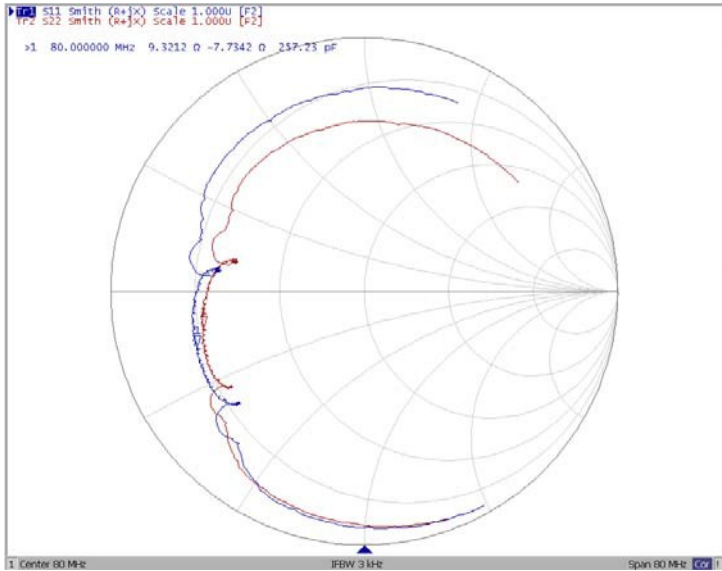
### Ripple Variation $Fo \pm 9.75\text{MHz}$



### Group Delay Variation $Fo \pm 9.75\text{MHz}$



### Smith Chart



### VSWR

