

D Electrical Characteristics

Maximum Ratings

Parameters Description	Unit	Minimum	Typical	Maximum
Operation Temperature Range	°C	-10	-	70
Storage Temperature Range	°C	-30	-	80
Maximum DC Voltage	V	-	-	10
Maximum Input Power	dBm	-	-	10
Source Impedance (single ended) ⁽¹⁾	Ω	-	50	-
Load Impedance (single ended) ⁽¹⁾	Ω	-	50	-
Package type & size	D1			
Length x Width	mm ²	-	20.0 x 9.8	-
Height	mm	-	-	1.8

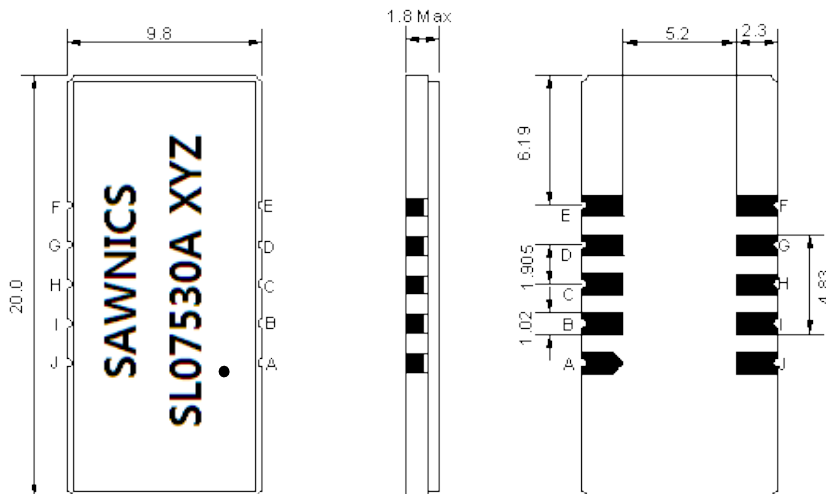
Electrical Specification

Parameters Description	Unit	Minimum	Typical	Maximum
Center Frequency (Fo)	MHz	-	75.0	-
Insertion Loss at Fo	dB	-	18.8	22.0
Group Delay Variation (Fo±14.52MHz)	ns	-	35	80
Absolute Delay	us	-	1.3	1.5
Passband Ripple (Fo±14.52MHz)	dB	-	0.40	0.90
Bandwidth at -1dB	MHz	29.50	30.25	-
Bandwidth at -5dB	MHz	-	31.45	31.76
Bandwidth at -10dB	MHz	-	32.23	-
Bandwidth at -20dB	MHz	-	33.18	-
Bandwidth at -40dB	MHz	-	34.62	-
Ultimate Rejection	dB	40	46	-
Temperature coefficient	ppm/°C	-	-86	-

Notes : (1) With Matching Network (Ref. Testing Environment Circuit as shown below).

Those impedances could be modified with different impedance values and/or structures, if necessary.

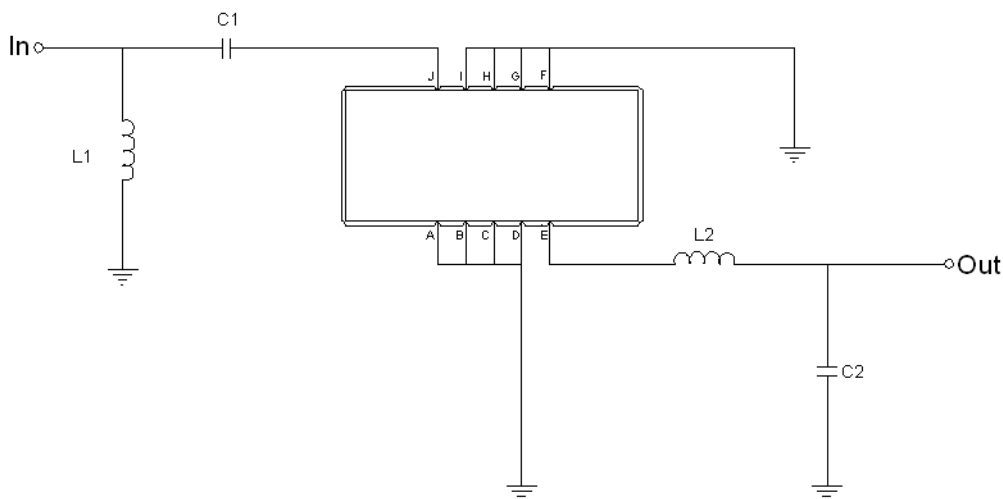
D Package Dimensions



- ① SAWNICS: Brand
- ② SL07530A: Model Name
- ③ X : Date Code (Year)
- ④ Y : Date Code (Month)
- ⑤ Z : Date Code (Date)
- : Index Dot

Pin Description	
A, B, C, D, F, G, H, I	Ground
J	Input
E	Output

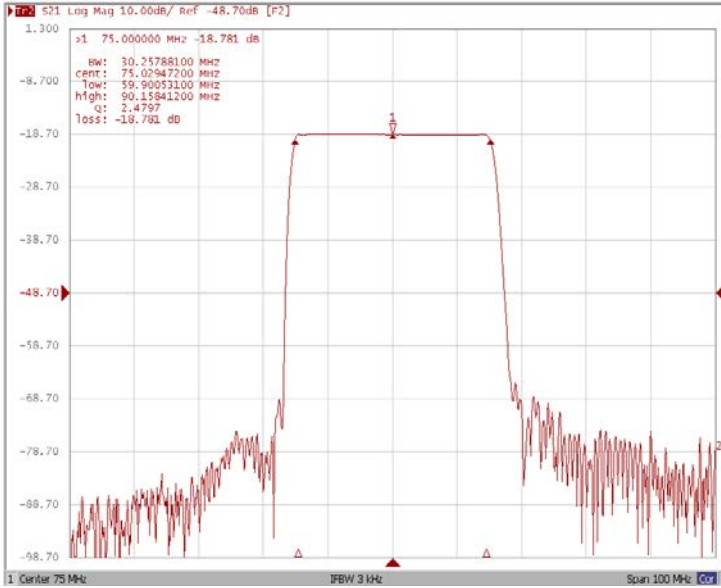
D Testing Environment



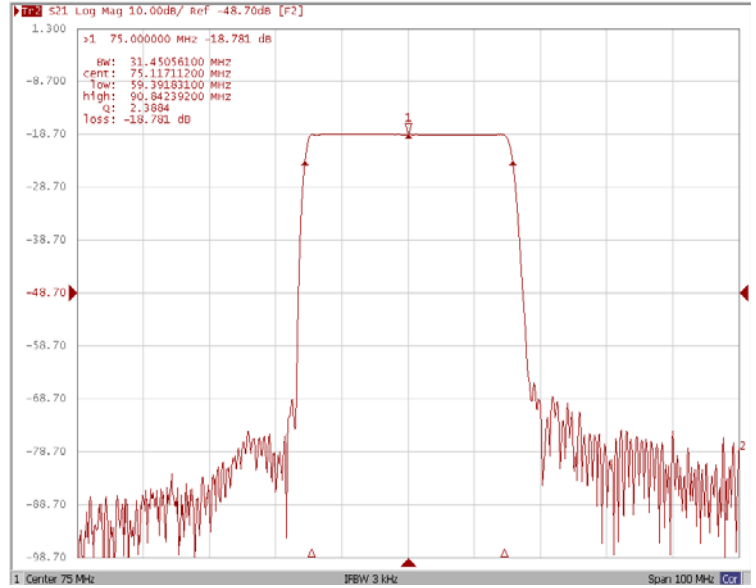
Test Fixture & Values	
Input	L1=68nH, C1=390pF
Output	L2=120nH, C2=43pF
Source/Load Impedance	50 Ω

Frequency Response

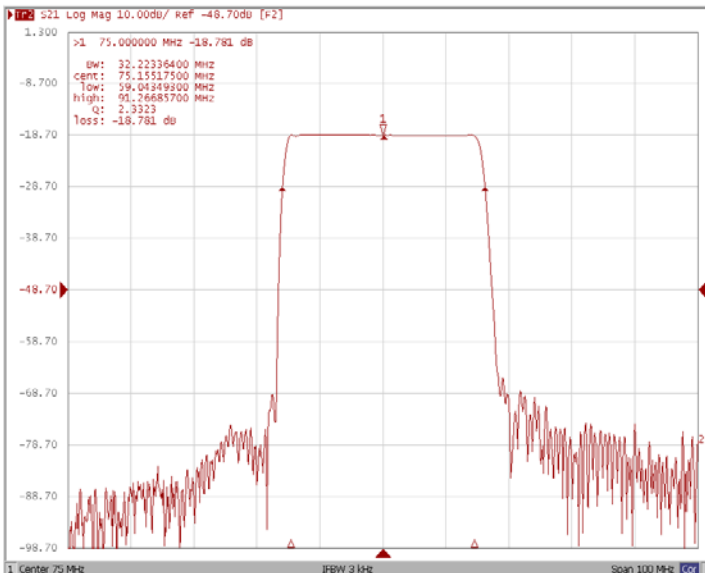
Bandwidth at -1.0 dB



Bandwidth at -5.0 dB



Bandwidth at -10.0 dB

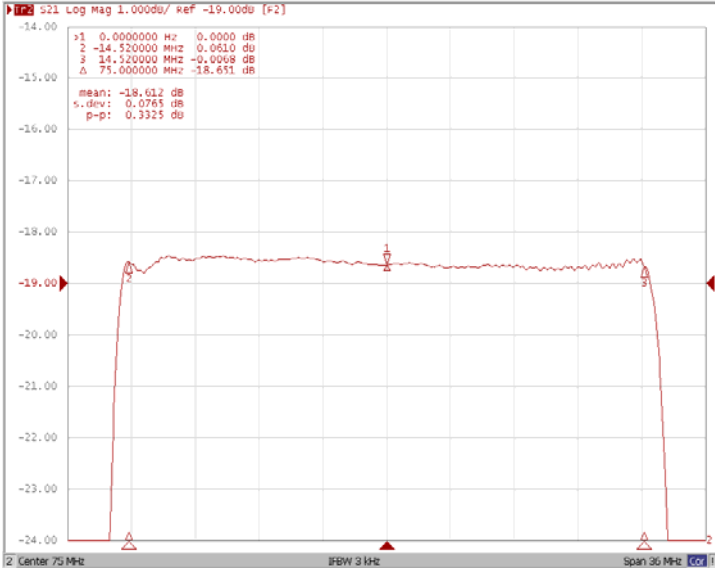


Bandwidth at -20.0 dB

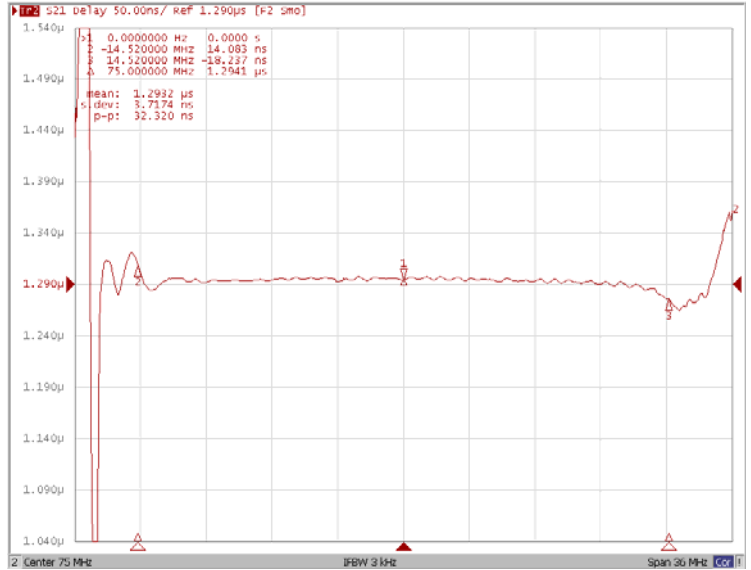


Frequency Response

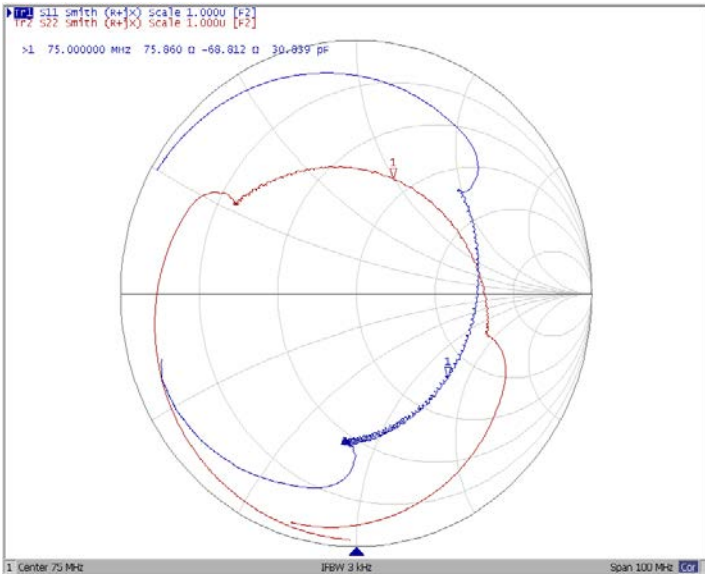
Ripple Variation Fo±14.52MHz



Group Delay Variation Fo±14.52MHz



Smith Chart



VSWR

