

Maximum Ratings

Parameters Description	Unit	Minimum	Typical	Maximum
Operation Temperature Range	°C	-	25	-
Storage Temperature Range	°C	-40	-	85
Maximum DC Voltage	V	-	-	10
Maximum Input Power	dBm	-	-	10
Source Impedance (single ended) ⁽¹⁾	Ω	-	50	-
Load Impedance (single ended) ⁽¹⁾	Ω	-	50	-
Package type & size	V			
Length x Width	mm ²	-	13.3 x 6.5	-
Height	mm	-	-	1.8

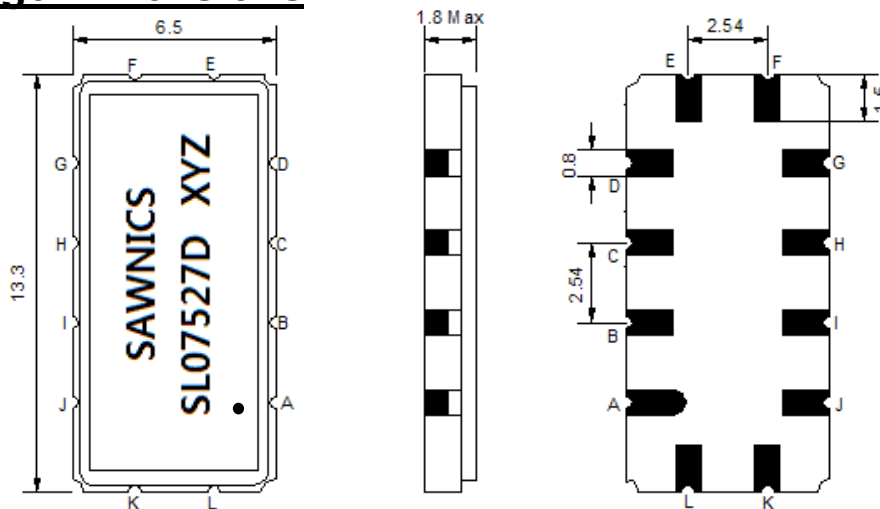
Electrical Specification

Parameters Description	Unit	Minimum	Typical	Maximum
Center Frequency (Fo)	MHz	-	75.0	-
Insertion Loss at Fo	dB	-	14.5	16.0
Group Delay Variation at Fo ± 12.48 MHz	nsec	-	20	50
Absolute Delay at Fo	usec	-	1.10	-
Passband Ripple Variation at Fo ± 12.48 MHz	dB	-	0.3	0.8
Bandwidth at -1dB	MHz	-	27.15	-
Bandwidth at -3dB	MHz	27.50	27.92	-
Bandwidth at -15dB	MHz	-	29.63	30.00
Bandwidth at -40dB	MHz	-	31.38	-
Ultimate Rejection	dB	40	47	-
Temperature Coefficient	ppm/°C	-	-86	-

Notes : (1) With Matching Network (Ref. Testing Environment Circuit as shown below).

Those impedances could be modified with different impedance values and/or structures, if necessary.

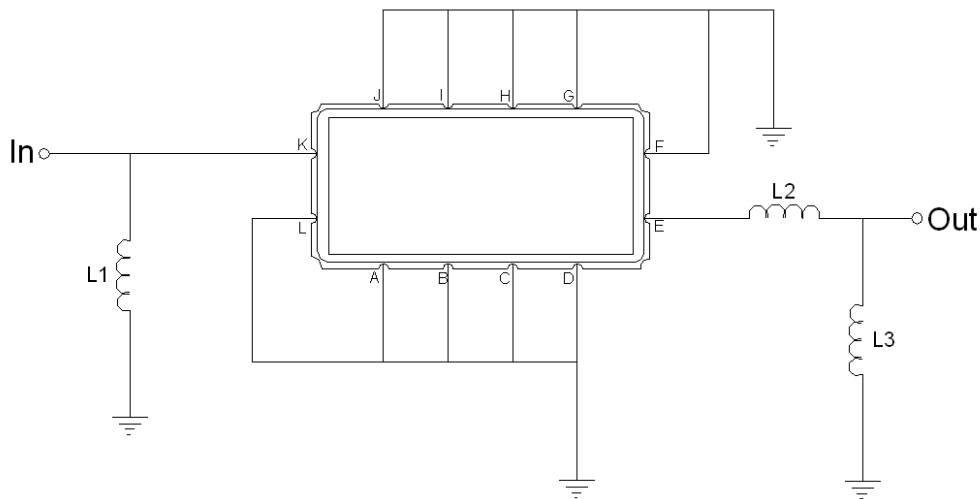
Package Dimensions



- ① SAWNICs: Brand
- ② SL07527D: Model Name
- ③ X : Date Code (Year)
- ④ Y : Date Code (Month)
- ⑤ Z : Date Code (Date)
- : Index Dot

Pin Description	
A, B, C, D, F, G, H, I, J, L	Ground
K	Input
E	Output

Testing Environment

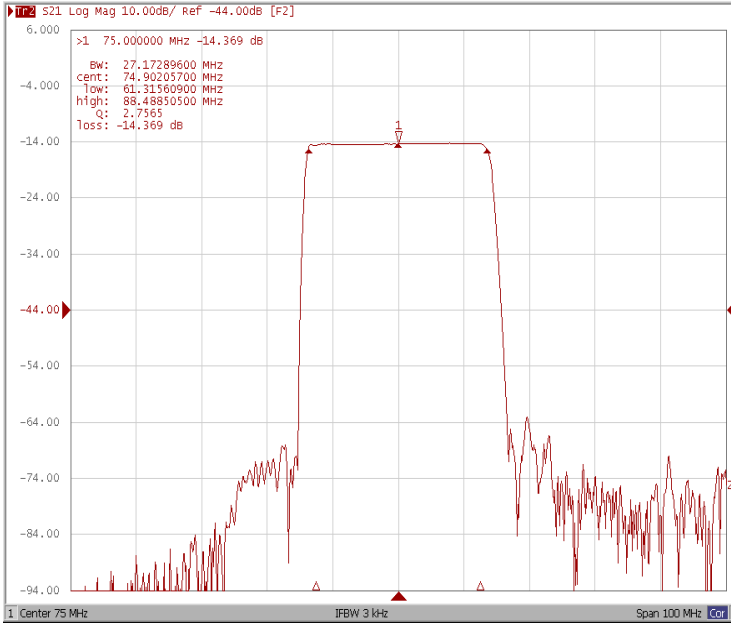


Test Fixture & Values	
Input	L1 = 68 nH
Output	L2 = 8.2 nH , L3 = 82 nH
Source/Load Impedance	50 Ω

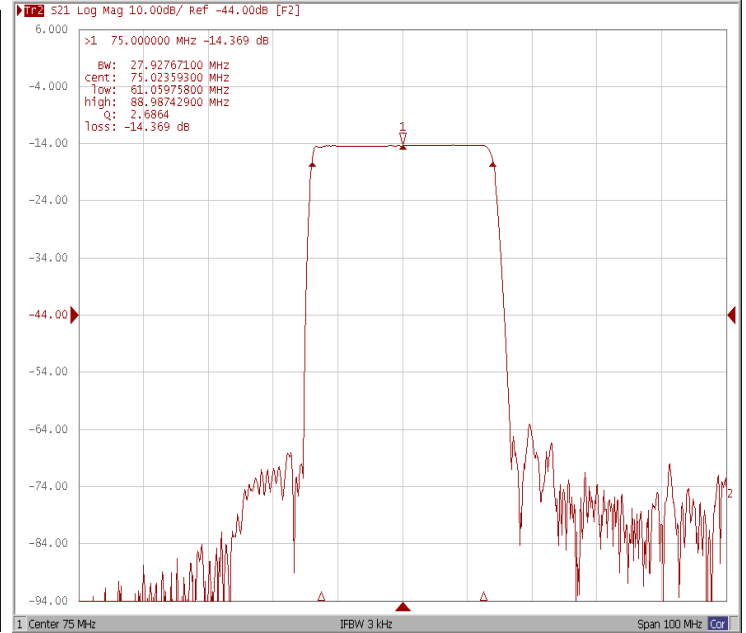
Frequency Characteristics

Frequency Response

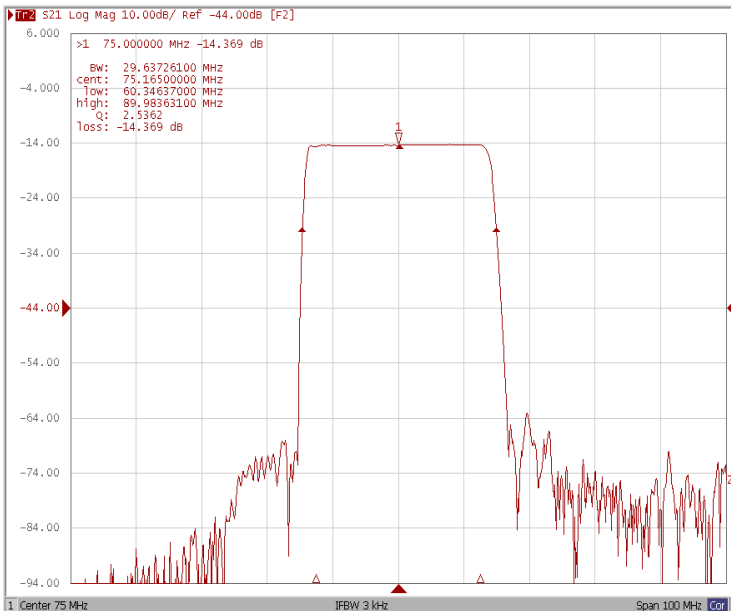
Bandwidth at -1.0 dB



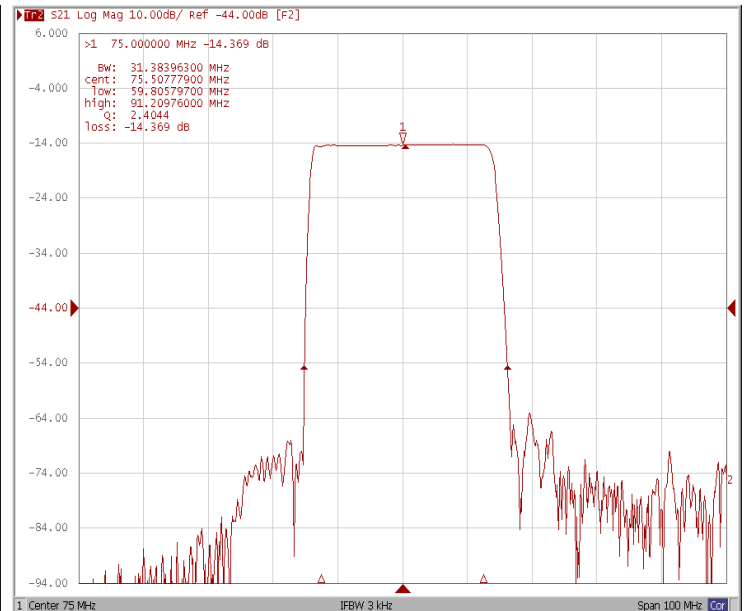
Bandwidth at -3.0 dB



Bandwidth at -15.0 dB

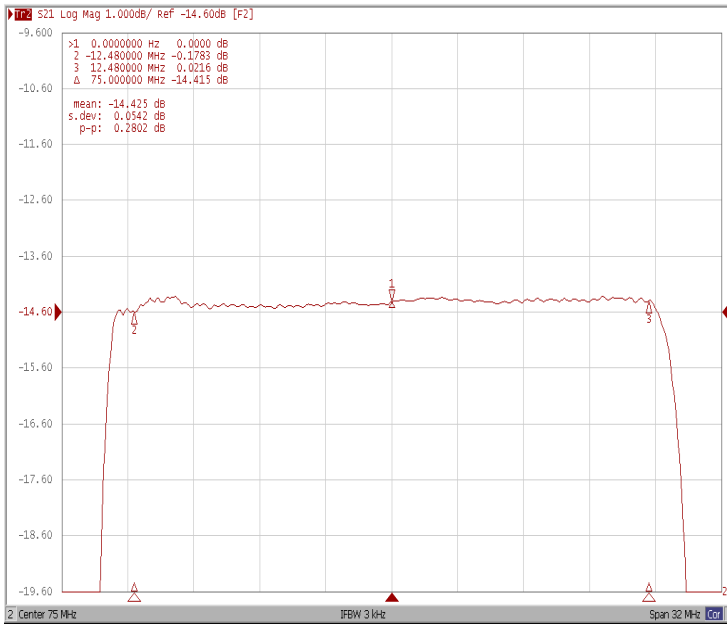


Bandwidth at -40.0 dB

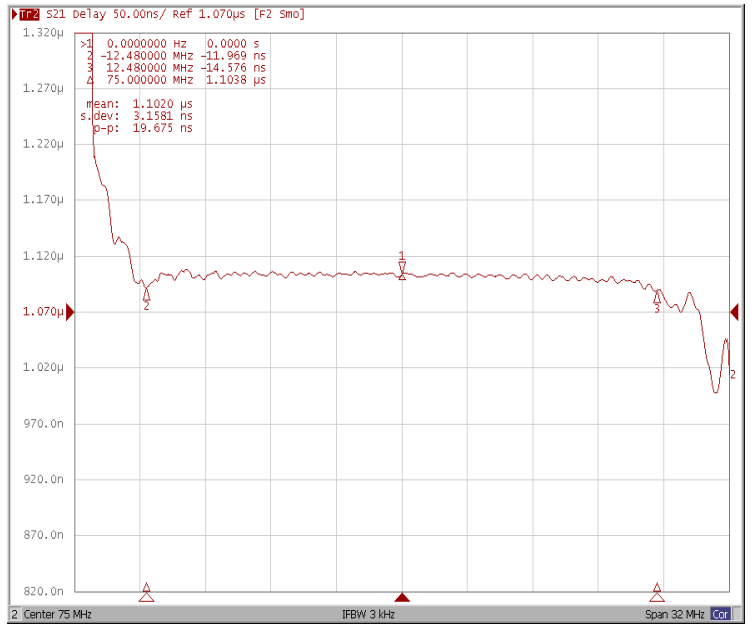


Frequency Response

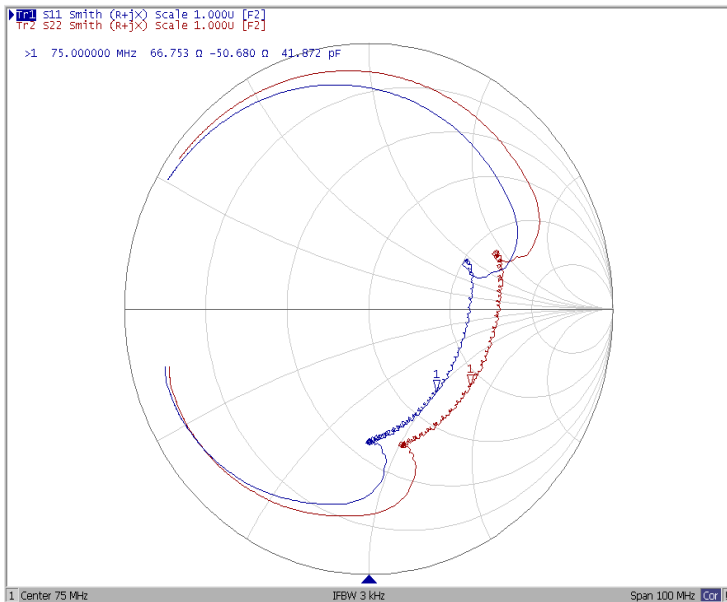
Ripple Variation $F_0 \pm 12.48\text{MHz}$



Group Delay Variation $F_0 \pm 12.48\text{MHz}$



Smith Chart



SWR

