

Maximum Ratings

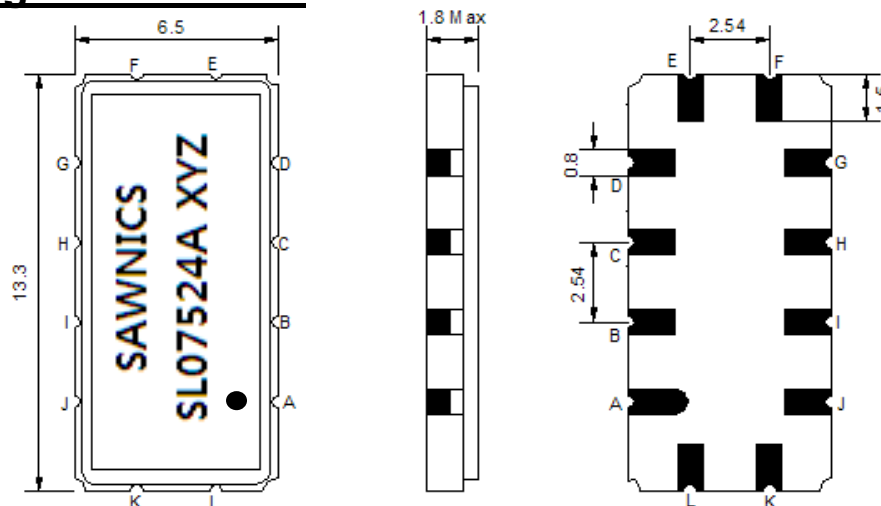
Parameters Description	Unit	Minimum	Typical	Maximum
Operating Temperature Range	°C	-30	-	80
Storage Temperature Range	°C	-40	-	85
Maximum DC Voltage	V	-	-	10
Maximum Input Power	dBm	-	-	10
Source Impedance (single ended) ⁽¹⁾	Ω	-	50	-
Load Impedance (single ended) ⁽¹⁾	Ω	-	50	-
Package type & size	V			
Length x Width	mm ²	-	13.3 x 6.5	-
Height	mm	-	-	1.8

Electrical Specification

Parameters Description	Unit	Minimum	Typical	Maximum
Center Frequency (Fo)	MHz	-	75.0	-
Insertion Loss at Fo	dB	-	16.00	18.00
Temperature Coefficient	ppm/°C	-	-86	-
Amplitude Ripple within fo ±11.2MHz	dB _{p-p}	-	0.45	0.80
Group Delay Variation within fo ±11.2 MHz	nsec	-	26	35
Absolute Delay at Fo	µsec	-	0.95	-
Bandwidth at -1.0 dB	MHz	23.0	24.35	-
Bandwidth at -3.0 dB	MHz	-	25.15	-
Bandwidth at -40.0 dB	MHz	-	29.10	30.3
Ultimate Attenuation		-	45	-

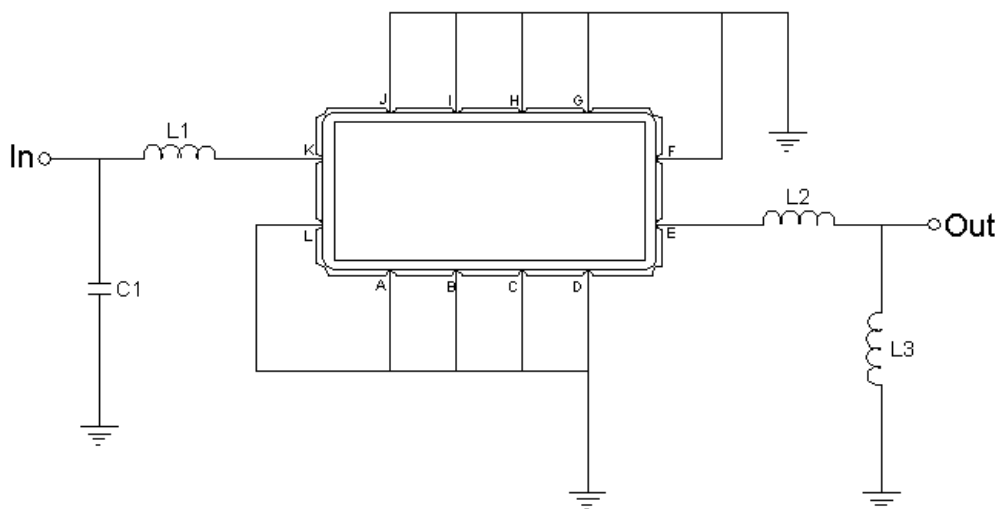
Notes : (1) With Matching Network (Ref. Testing Environment Circuit as shown below).
Those impedances could be modified with different impedance values and/or structures, if necessary.

Package Dimensions



Pin Description	
A, B, C, D, F, G, H, I, J, L	Ground
K	Input
E	Output

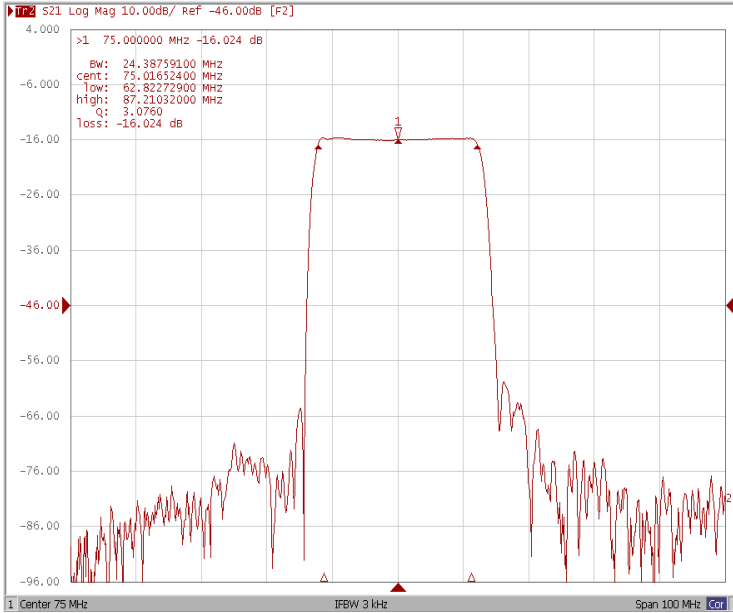
Testing Environment



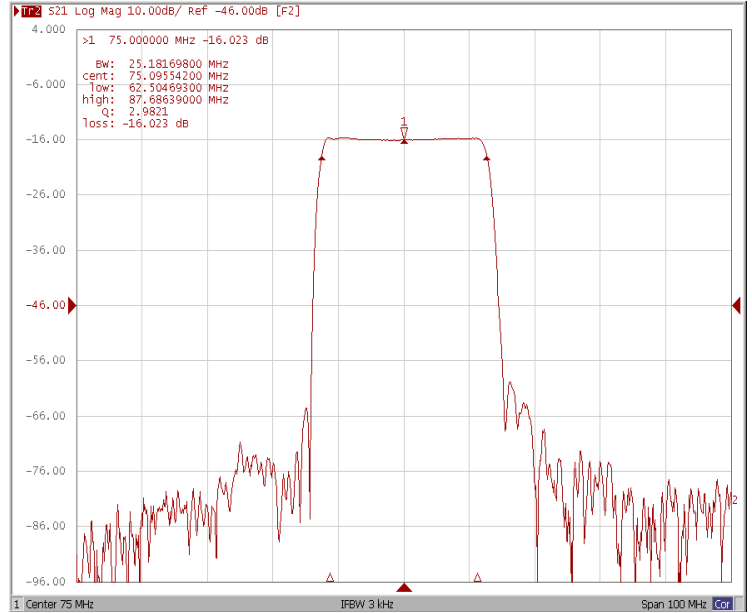
Test Fixture & Values	
Input	L1=100nH ,C1=13pF
Output	L2=27nH ,L3=100nH
Source/Load Impedance	50 Ω

Frequency Response

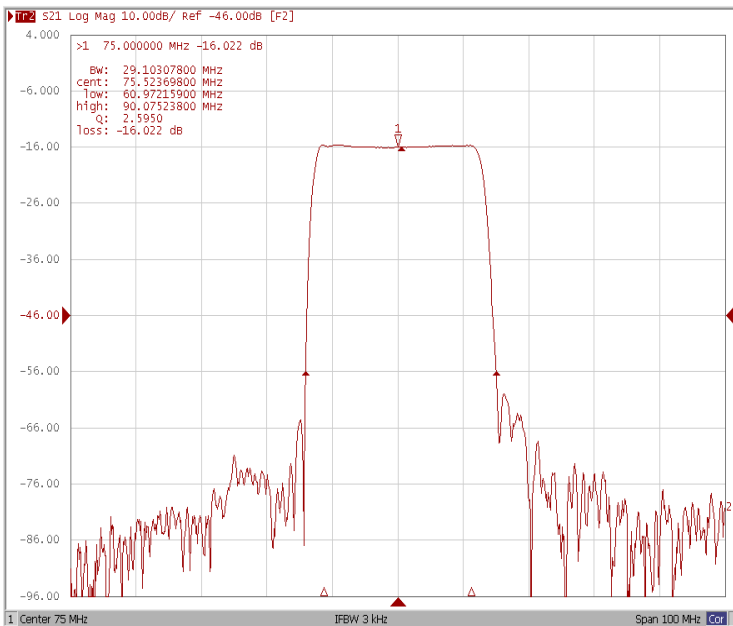
Bandwidth at -1.0 dB



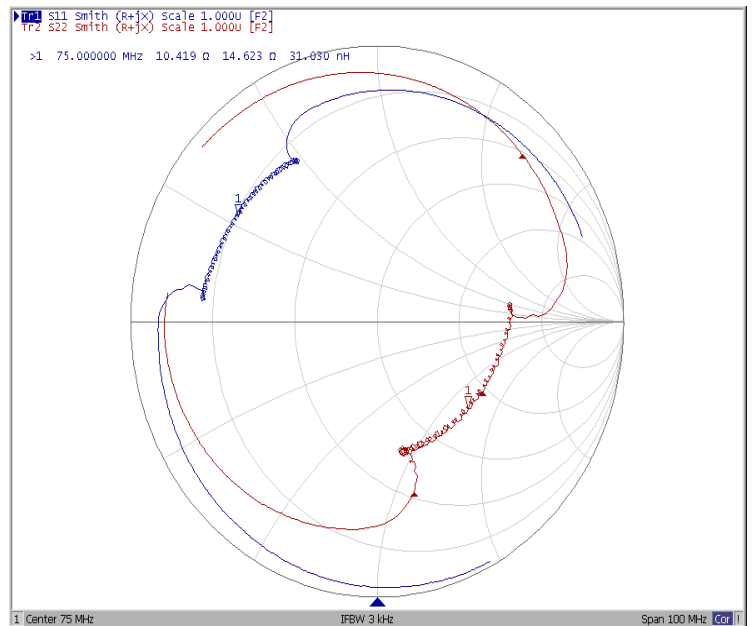
Bandwidth at -3.0 dB



Bandwidth at -40.0 dB

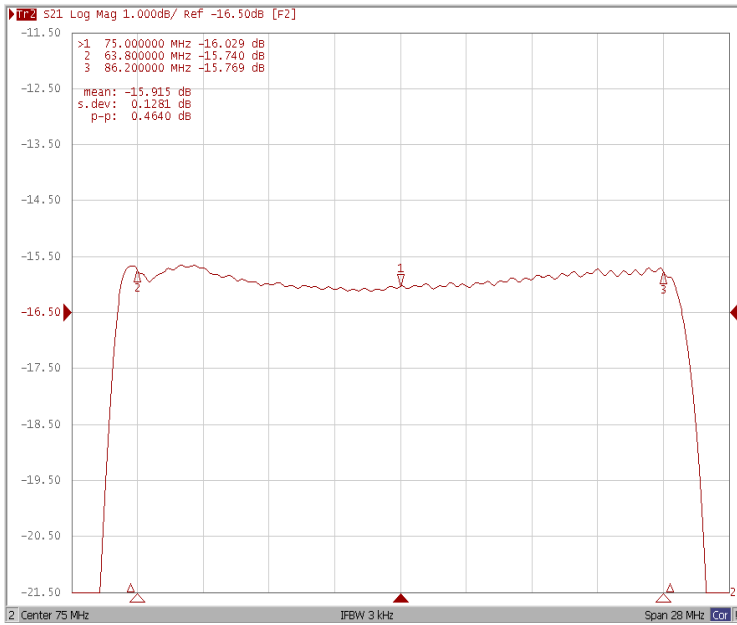


SMITH

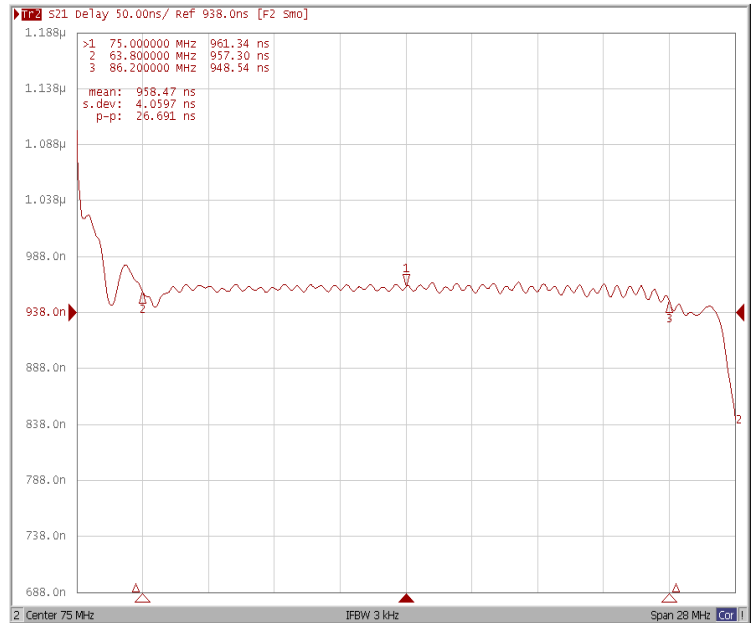


Frequency Response

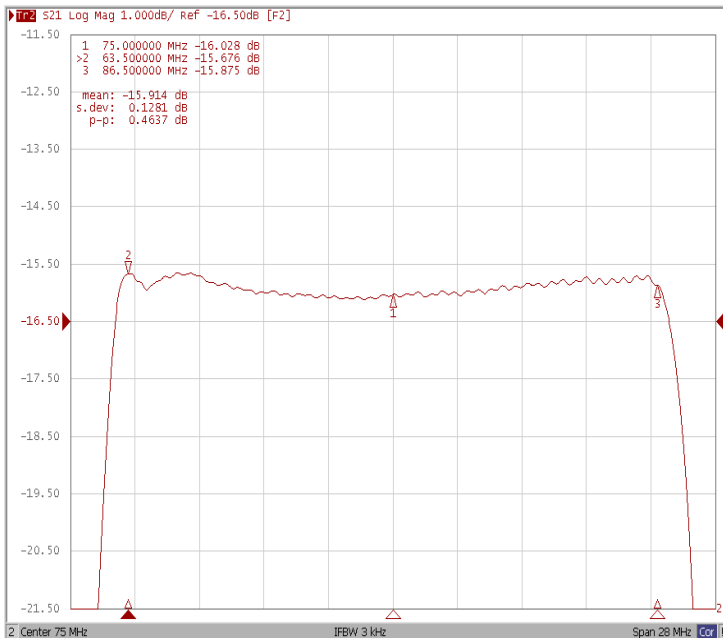
Ripple Variation Fo±11.2MHz



Group Delay Variation Fo±11.2MHz



Ripple Variation Fo±11.5MHz



Group Delay Variation Fo±11.5MHz

