

## Maximum Ratings

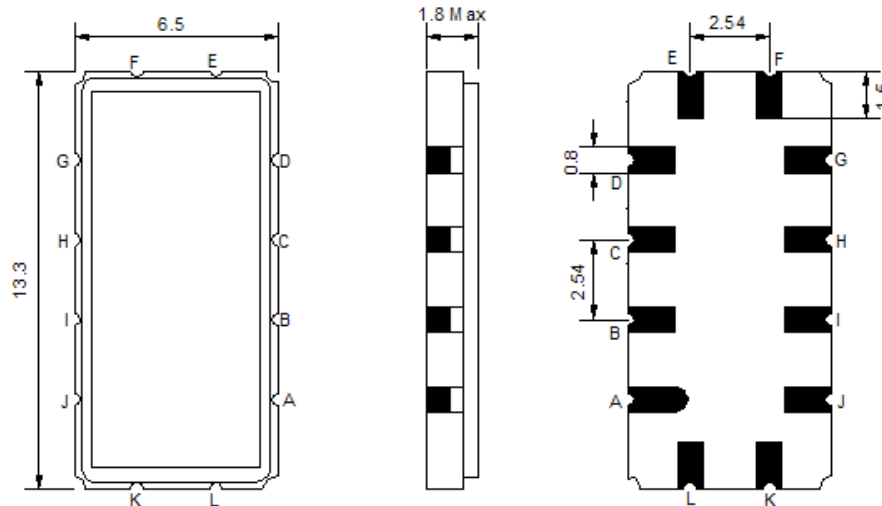
| Parameters Description                         | Unit            | Minimum | Typical    | Maximum |
|--|-----------------|---------|------------|---------|
| Operating Temperature Range                    | °C              | -40     | -          | 85      |
| Storage Temperature Range                      | °C              | -40     | -          | 85      |
| Maximum DC Voltage                             | V               | -       | -          | 10      |
| Maximum Input Power                            | dBm             | -       | -          | 10      |
| Source Impedance (single ended) <sup>(1)</sup> | Ω               | -       | 50         | -       |
| Load Impedance (single ended) <sup>(1)</sup>   | Ω               | -       | 50         | -       |
| Package type & size                            | V               |         |            |         |
| Length x Width                                 | mm <sup>2</sup> | -       | 13.3 x 6.5 | -       |
| Height   | mm              | -       | -          | 1.8     |

## Electrical Specification

| Parameters Description                     | Unit              | Minimum | Typical | Maximum |
|--|-------------------|---------|---------|---------|
| Center Frequency (Fo)                      | MHz               | 69.8    | 70.0    | 70.2    |
| Insertion Loss at Fo                       | dB                | -       | 10.7    | 11.5    |
| Temperature Coefficient                    | ppm/°C            | -       | -84     | -       |
| Amplitude Ripple Variation at fo ± 3.7 MHz | dB <sub>p-p</sub> | -       | 0.6     | 1.0     |
| Group Delay Variation at fo ± 3.7 MHz      | nsec              | -       | 125     | 160     |
| Absolute Delay at Fo                       | µsec              | -       | 0.94    | -       |
| IN/OUT Return Loss at Fo                   | dB                | -       | -       | -       |
| Bandwidth at -1.0 dB                       | MHz               | 8.4     | 8.66    | -       |
| Bandwidth at -3.0 dB                       | MHz               | 9.0     | 9.31    | -       |
| Bandwidth at -35.0 dB                      | MHz               | -       | 11.70   | 13.0    |
| Relative Attenuation:                      |                   |         |         |         |
| 10 ~ 64 MHz                                | dB                | 40      | 46      | -       |
| 77 ~ 140 MHz                               | dB                | 40      | 42      | -       |

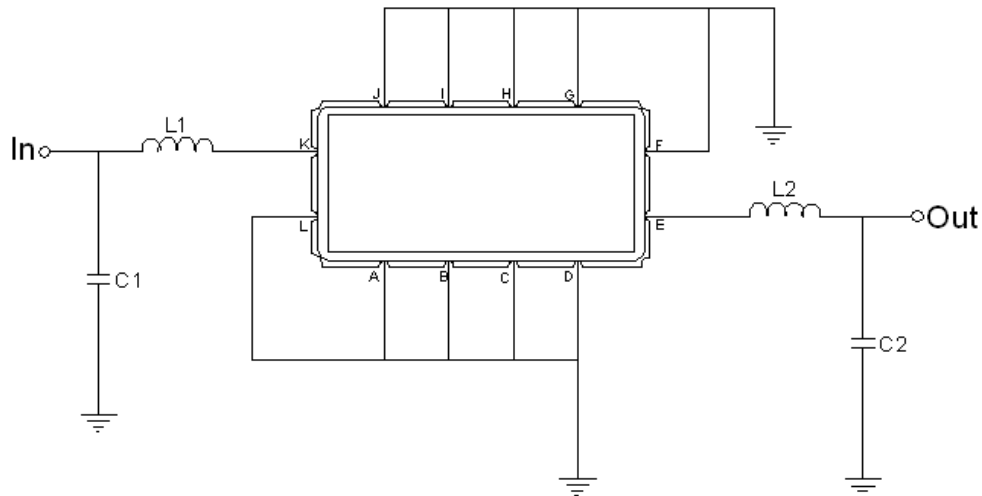
**Notes :** (1) With Matching Network (Ref. Testing Environment Circuit as shown below).  
Those impedances could be modified with different impedance values and/or structures, if necessary.

## Package Dimensions



| Pin Description              |        |
|------------------------------|--------|
| A, B, C, D, F, G, H, I, J, L | Ground |
| K                            | Input  |
| E                            | Output |

## Testing Environment



| Test Fixture & Values |                          |
|-----------------------|--------------------------|
| Input                 | L1=220nH Q >40 , C1=36pF |
| Output                | L2=220nH Q.>40 , C2=68pF |
| Source/Load Impedance | 50 $\Omega$              |

## Frequency Response

