

Maximum Ratings

Parameters Description	Unit	Minimum	Typical	Maximum
Operation Temperature Range	°C	0	-	60
Storage Temperature Range	°C	-30	-	80
Maximum DC Voltage	V	-	-	10
Maximum Input Power	dBm	-	-	10
Source Impedance (single ended) ⁽¹⁾	Ω	-	50	-
Load Impedance (single ended) ⁽¹⁾	Ω	-	50	-
Package type & size	D1			
Length x Width	mm ²	-	20.0 x 9.8	-
Height	mm	-	-	1.8

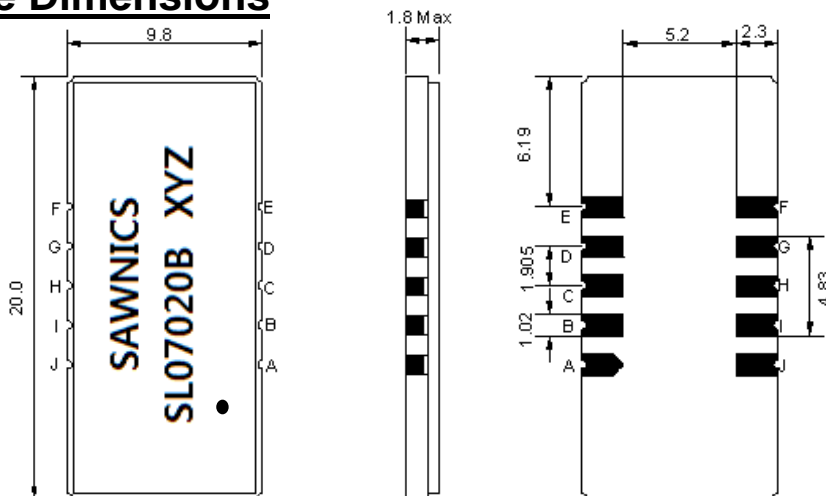
Electrical Specification

Parameters Description	Unit	Minimum	Typical	Maximum
Center Frequency (Fo)	MHz	69.90	70.00	70.10
Insertion Loss at Fo	dB	-	18.75	20.0
Group Delay Variation (Fo±9.65MHz)	ns	-	70	150
Absolute Delay	us	-	1.64	-
Passband Ripple (Fo±9.65MHz)	dB	-	0.80	1.00
Bandwidth at -1dB	MHz	19.80	20.05	-
Bandwidth at -3dB	MHz	-	20.50	-
Bandwidth at -20dB	MHz	-	21.75	-
Bandwidth at -40dB	MHz	-	22.70	22.95
Ultimate Rejection	dB	-	48	-
Temperature coefficient	ppm/°C	-	-86	-

Notes : (1) With Matching Network (Ref. Testing Environment Circuit as shown below).

Those impedances could be modified with different impedance values and/or structures, if necessary.

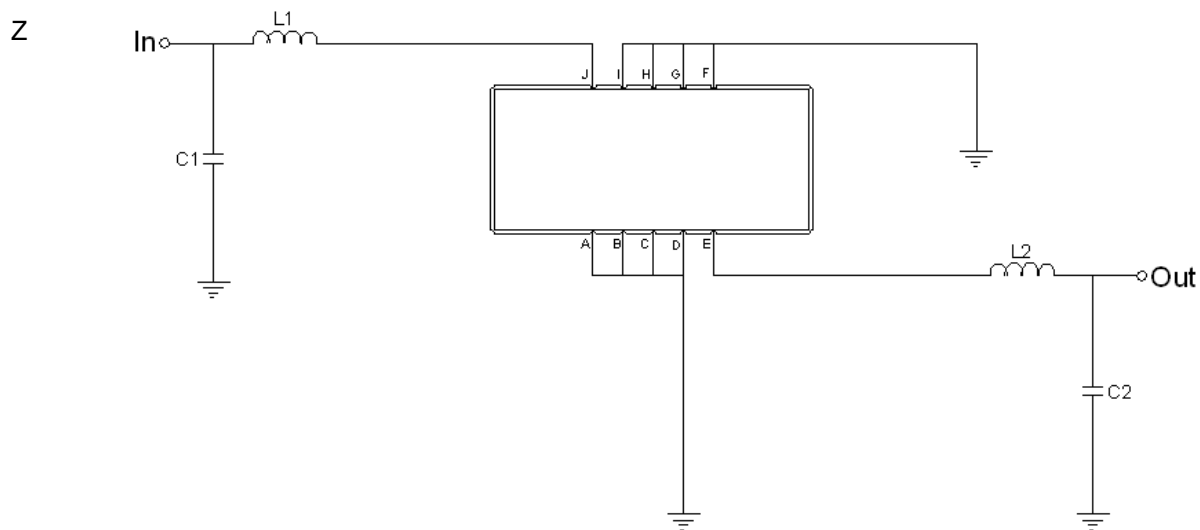
Package Dimensions



- ① SAWNICS: Brand
- ② SL07020B: Model Name
- ③ X : Date Code (Year)
- ④ Y : Date Code (Month)
- ⑤ Z : Date Code (Date)
- : Index Dot

Pin Description	
A, B, C, D, F, G, H, I	Ground
J	Input
E	Output

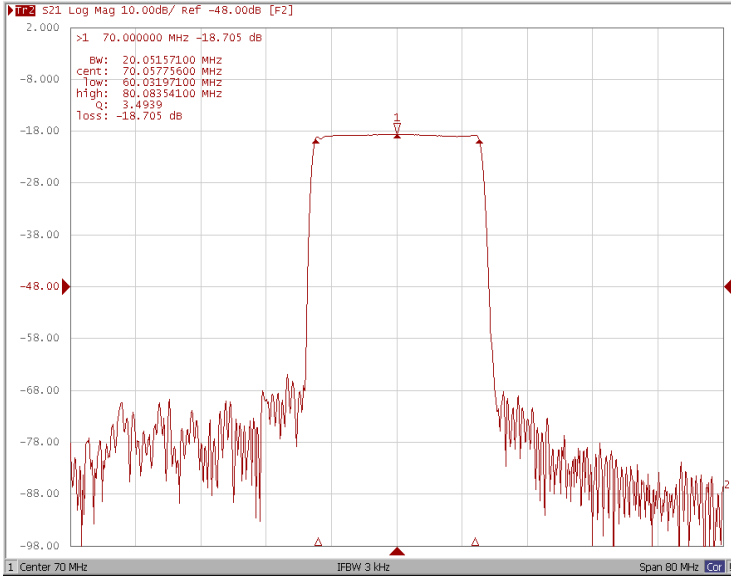
Testing Environment



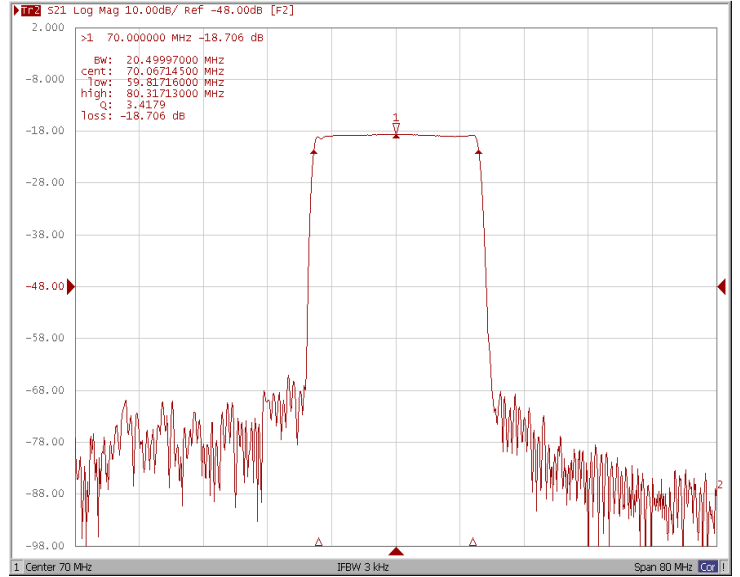
Test Fixture & Values	
Input	L1=68nH, C1=91pF
Output	L2=82nH, C2=75pF
Source/Load Impedance	50 Ω

Frequency Response

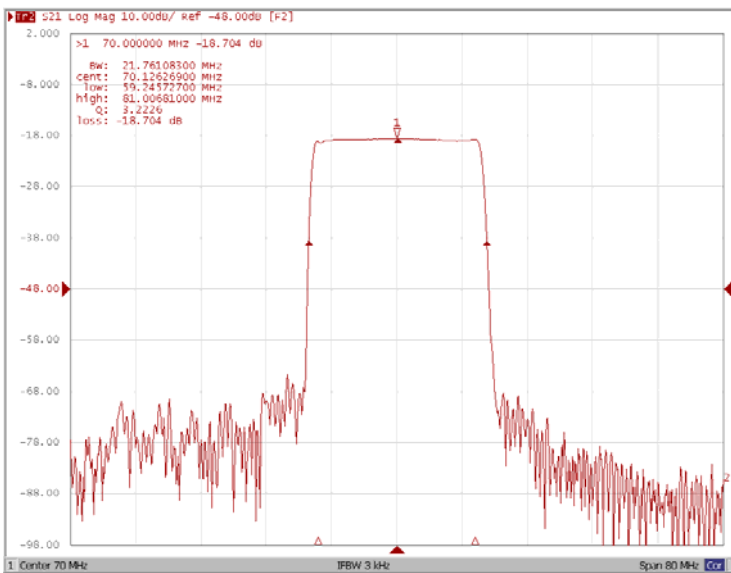
Bandwidth at -1.0 dB



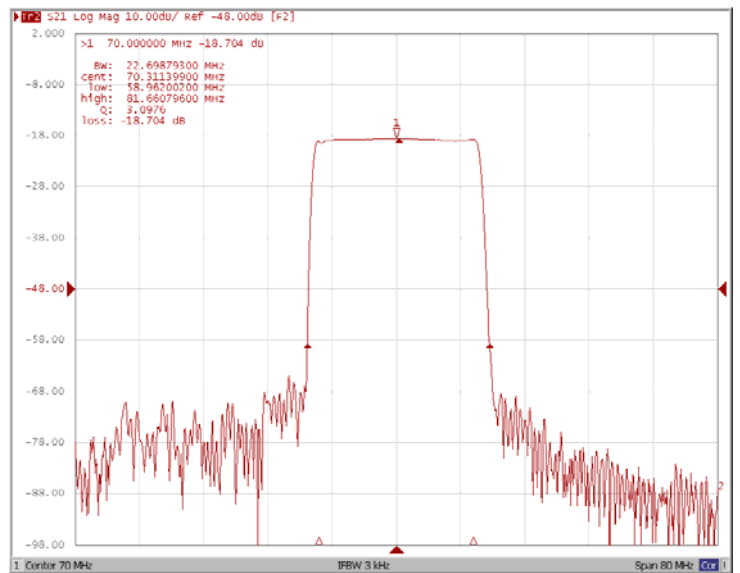
Bandwidth at -3.0 dB



Bandwidth at -20.0 dB

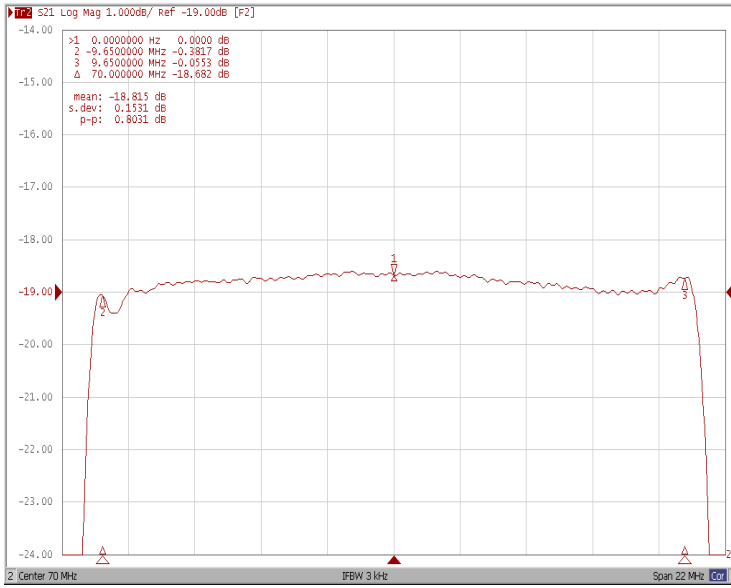


Bandwidth at -40.0 dB

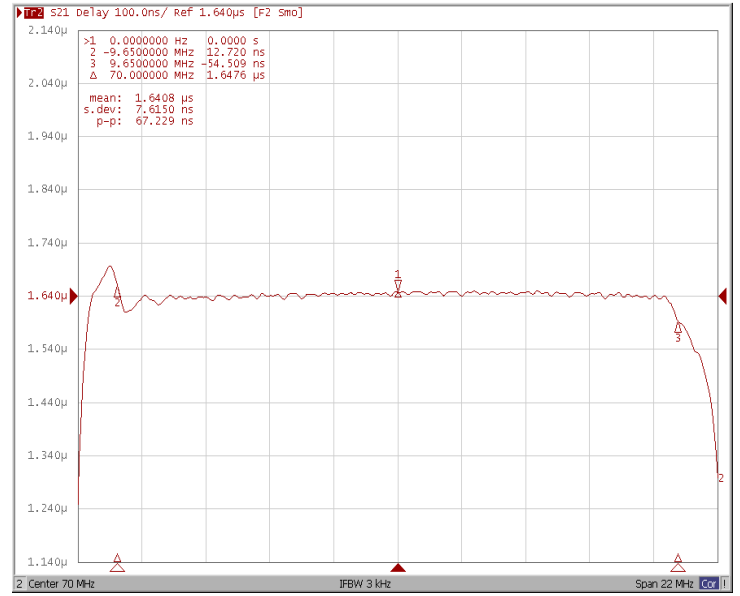


Frequency Response

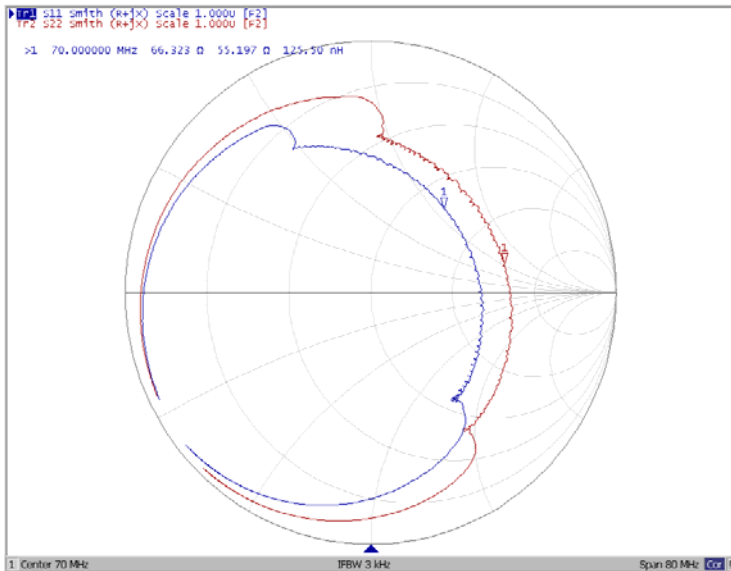
Ripple Variation Fo±9.65MHz



Group Delay Variation Fo±9.65MHz



Smith Chart



VSWR

