

Maximum Ratings

| Parameters Description | Unit | Minimum | Typical | Maximum |
|--|-----------------|---------|------------|---------|
| Operating Temperature Range | °C | -30 | - | 80 |
| Storage Temperature Range | °C | -40 | - | 85 |
| Maximum DC Voltage | V | - | - | 10 |
| Maximum Input Power | dBm | - | - | 10 |
| Source Impedance (single ended) ⁽¹⁾ | Ω | - | 50 | - |
| Load Impedance (single ended) ⁽¹⁾ | Ω | - | 50 | - |
| Package type & size | V | | | |
| Length x Width | mm ² | - | 13.3 x 6.5 | - |
| Height | mm | - | - | 1.8 |

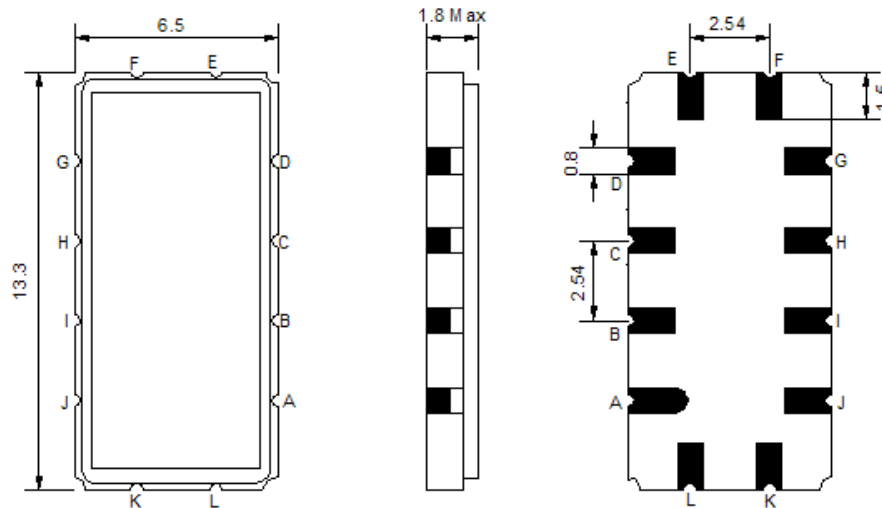
Electrical Specification

| Parameters Description | Unit | Minimum | Typical | Maximum |
|---|-------------------|---------|---------|---------|
| Center Frequency (Fo) | MHz | 69.8 | 70.0 | 70.2 |
| Insertion Loss at Fo | dB | - | 15.5 | 16.5 |
| Temperature Coefficient | ppm/°C | - | -84 | - |
| Amplitude Ripple Variation at Fo ±8.2 MHz | dB _{p-p} | - | 0.5 | 1.0 |
| Group Delay Variation at Fo ±8.2 MHz | nsec | - | 25 | 50 |
| Absolute Delay at Fo | µsec | - | 0.85 | - |
| IN/OUT Return Loss at Fo | dB | - | - | - |
| Bandwidth at -1.0 dB | MHz | 18.7 | 18.99 | - |
| Bandwidth at -3.0 dB | MHz | 19.7 | 20.05 | - |
| Bandwidth at -40.0 dB | MHz | - | 24.08 | 25.5 |
| Relative Attenuation: | | | | |
| 10 ~ 57 MHz | dB | 40 | 45 | - |
| 83 ~ 140 MHz | dB | 40 | 45 | - |

Notes : (1) With Matching Network (Ref. Testing Environment Circuit as shown below).

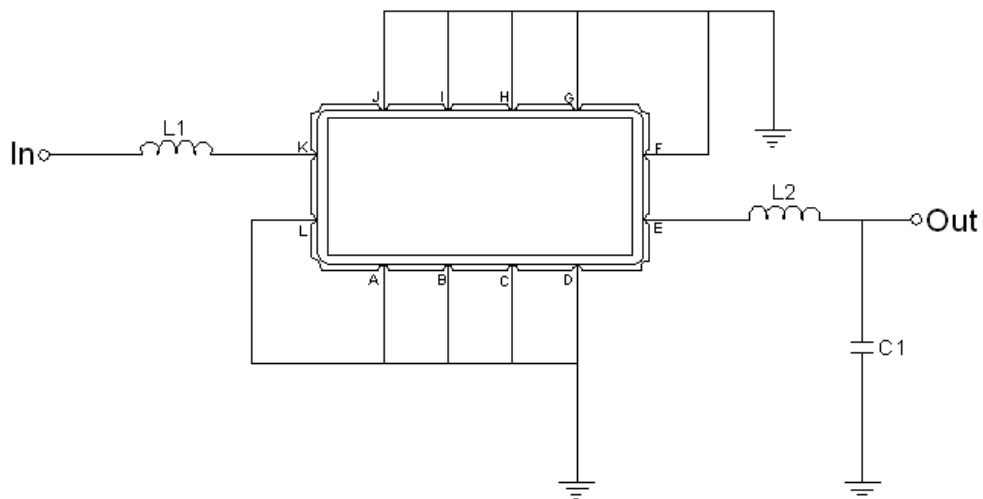
Those impedances could be modified with different impedance values and/or structures, if necessary.

Package Dimensions



| Pin Description | |
|------------------------------|--------|
| A, B, C, D, F, G, H, I, J, L | Ground |
| K | Input |
| E | Output |

Testing Environment



| Test Fixture & Values | |
|-----------------------|--------------------------|
| Input | L1=68nH Q >40 , |
| Output | L2=270nH Q.>40 , C2=20pF |
| Source/Load Impedance | 50 Ω |

Frequency Response

