

Electrical Characteristics

Maximum Ratings

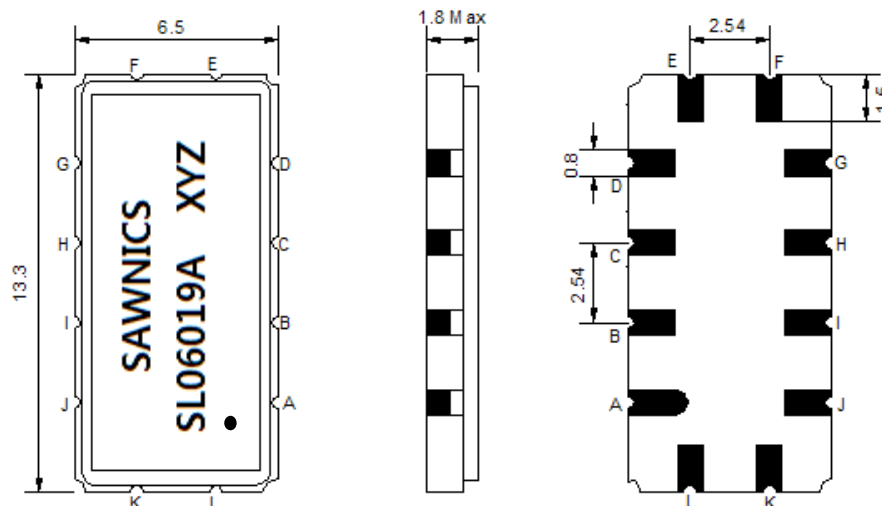
Parameters Description	Unit	Minimum	Typical	Maximum
Operation Temperature Range	°C	0		70
Storage Temperature Range	°C	-30	-	80
Maximum DC Voltage	V	-	-	10
Maximum Input Power	dBm	-	-	10
Source Impedance (single ended) ⁽¹⁾	Ω	-	50	-
Load Impedance (single ended) ⁽¹⁾	Ω	-	50	-
Package type & size	V			
Length x Width	mm ²	-	13.3 x 6.5	-
Height	mm	-	-	1.8

Electrical Specification

Parameters Description	Unit	Minimum	Typical	Maximum
Center Frequency (Fo)	MHz	-	60.0	-
Insertion Loss at Fo	dB	-	14.1	16.0
Group Delay Variation (Fo±9.22MHz)	ns	-	30	80
Absolute Delay	us	-	1.34	-
Passband Ripple (Fo±9.22MHz)	dB	-	0.55	1.0
Bandwidth at -1dB	MHz	18.44	19.6	-
Bandwidth at -10dB	MHz	-	21.7	22.3
Bandwidth at -20dB	MHz	-	22.4	23.0
Bandwidth at -30dB	MHz		23.1	23.6
Bandwidth at -40dB	MHz	-	23.8	-
Ultimate Rejection	dB	40	45	-
Temperature Coefficient of Frequency	ppm/°C		-86	

Notes : (1) With Matching Network (Ref. Testing Environment Circuit as shown below).
Those impedances could be modified with different impedance values and/or structures, if necessary.

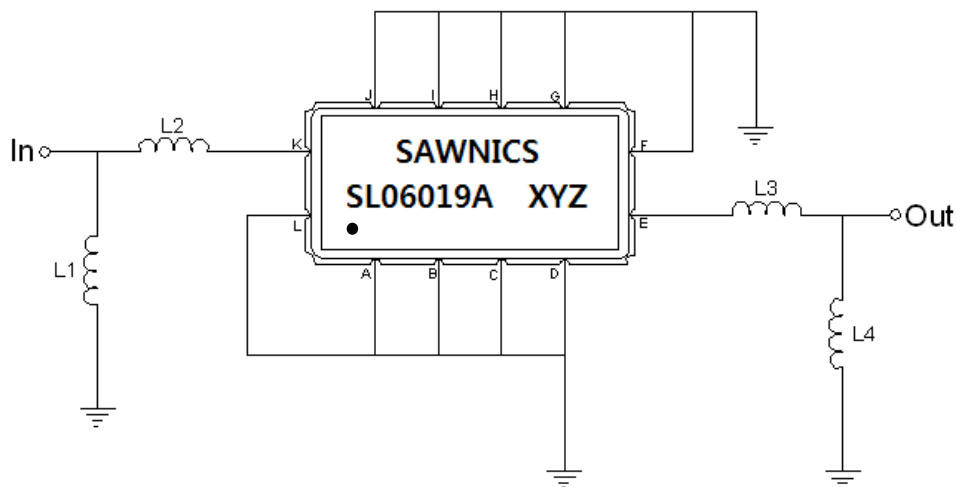
Package Dimensions



- ① SAWNICS: Brand
- ② SL06019A: Model Name
- ③ X : Date Code (Year)
- ④ Y : Date Code (Month)
- ⑤ Z : Date Code (Date)
- : Index Dot

Pin Description	
A, B, C, D, F, G, H, I, J, L	Ground
K	Input
E	Output

Testing Environment



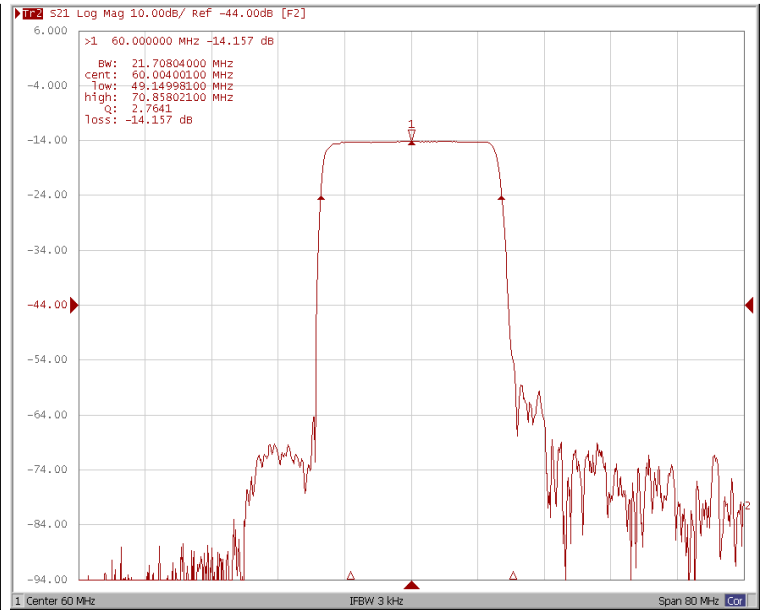
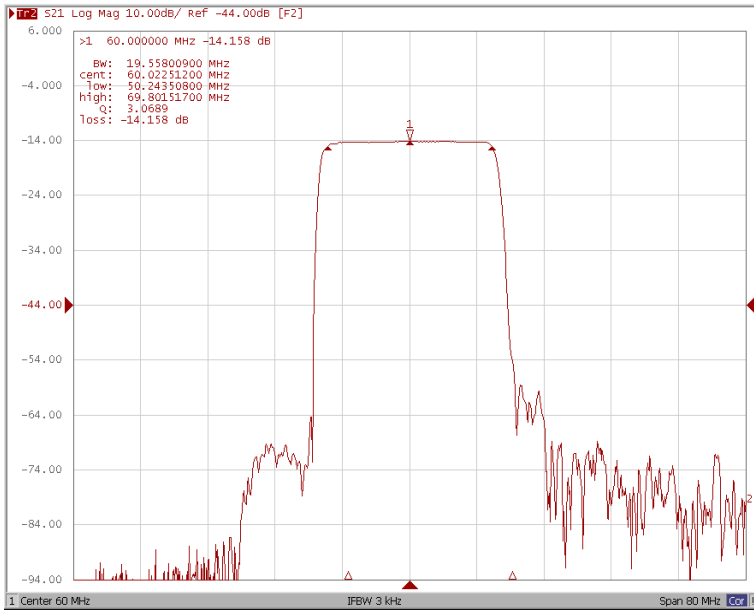
Test Fixture & Values	
Input	L1=82 nH, L2=22 nH
Output	L3=27 nH, L4=150 nH
Source/Load Impedance	50 Ω

Frequency Characteristics

Frequency Response

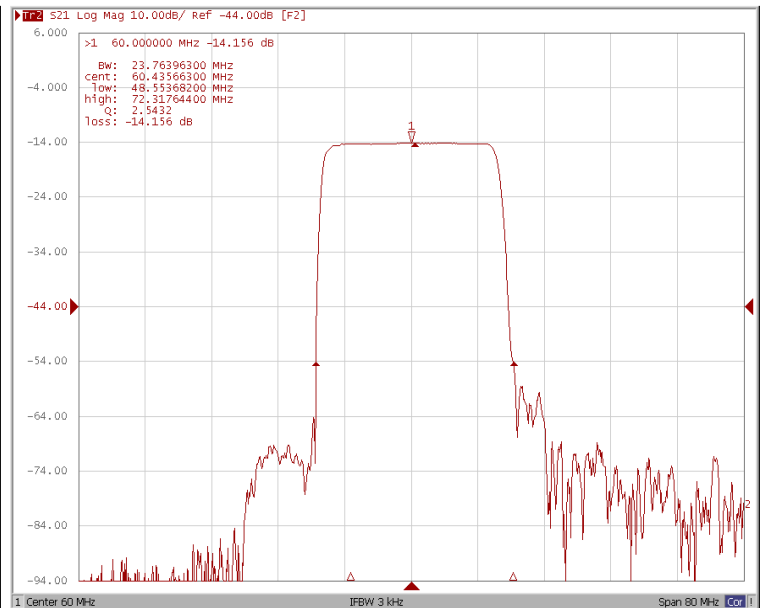
Bandwidth at -1.0 dB

Bandwidth at -10.0 dB



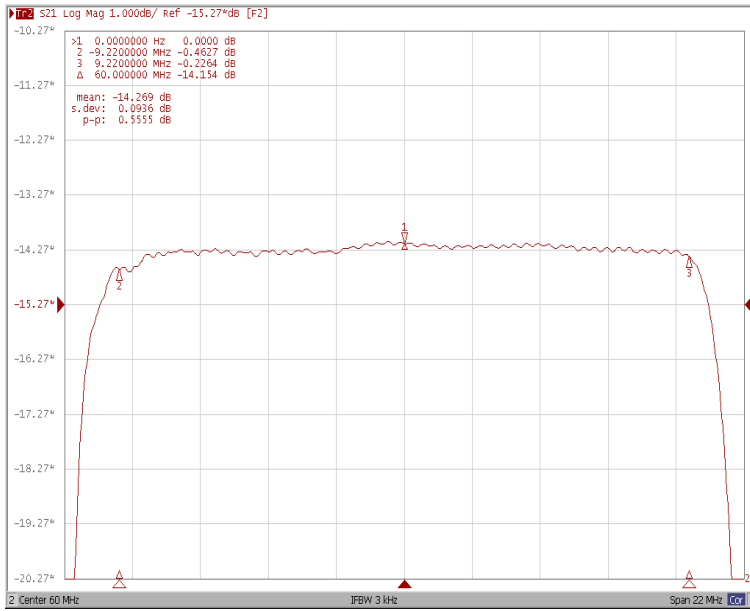
Bandwidth at -20.0 dB

Bandwidth at -40.0 dB

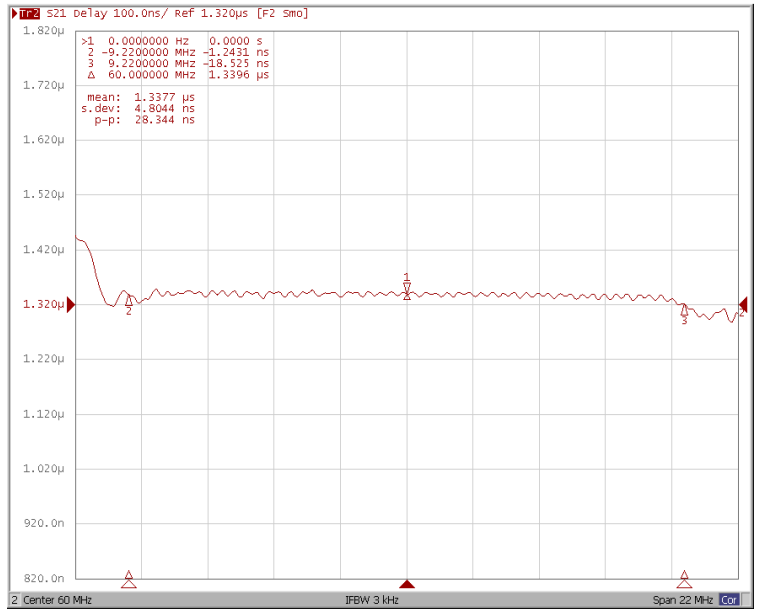


Frequency Response

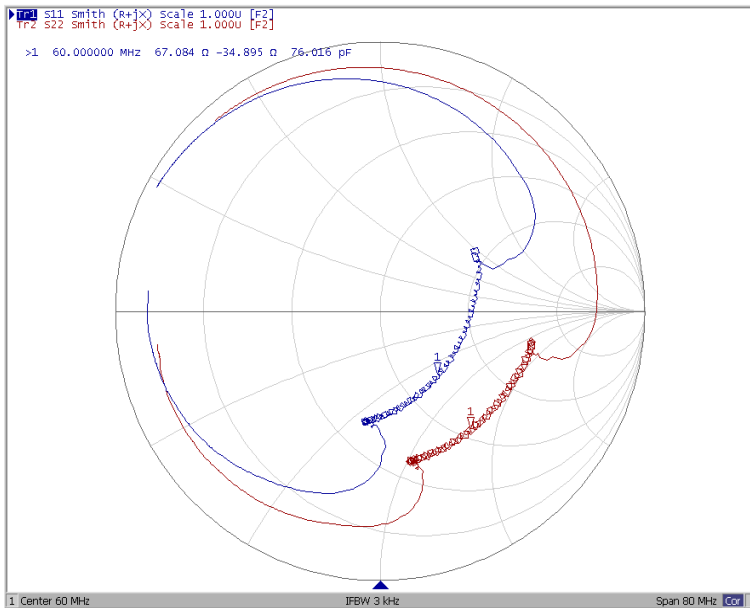
Ripple Variation Fo±9.22MHz



Group Delay Variation Fo±9.22MHz



Smith Chart



VSWR

