

□ Electrical Characteristics

Maximum Ratings

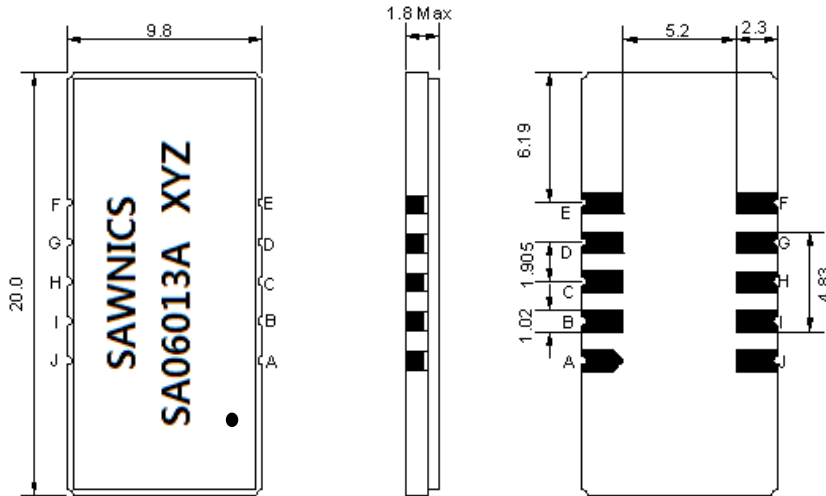
Parameters Description	Unit	Minimum	Typical	Maximum
Operation Temperature Range	°C	-30	-	80
Storage Temperature Range	°C	-40	-	85
Maximum DC Voltage	V	-	-	10
Maximum Input Power	dBm	-	-	10
Source Impedance (single ended) ⁽¹⁾	Ω	-	50	-
Load Impedance (single ended) ⁽¹⁾	Ω	-	50	-
Package type & size	D1			
Length x Width	mm ²	-	20.0 x 9.8	-
Height	mm	-	-	1.8

Electrical Specification

Parameters Description	Unit	Minimum	Typical	Maximum
Center Frequency (Fo)	MHz	60.43	60.51	60.59
Insertion Loss at Fo	dB	-	24.00	25.00
Group Delay Variation	ns	-	35	60
Absolute Delay at Fo	us	-	2.33	-
Passband Ripple Variation	dB	-	0.45	0.95
Bandwidth at -1dB	MHz	-	13.91	-
Bandwidth at -3dB	MHz	14.10	14.24	-
Bandwidth at -50dB	MHz	-	15.76	15.85
Ultimate Rejection	dB	50	53	-
Temperature coefficient	ppm/°C	-	-72	-

Notes : (1) With Matching Network (Ref. Testing Environment Circuit as shown below).
Those impedances could be modified with different impedance values and/or structures, if necessary.

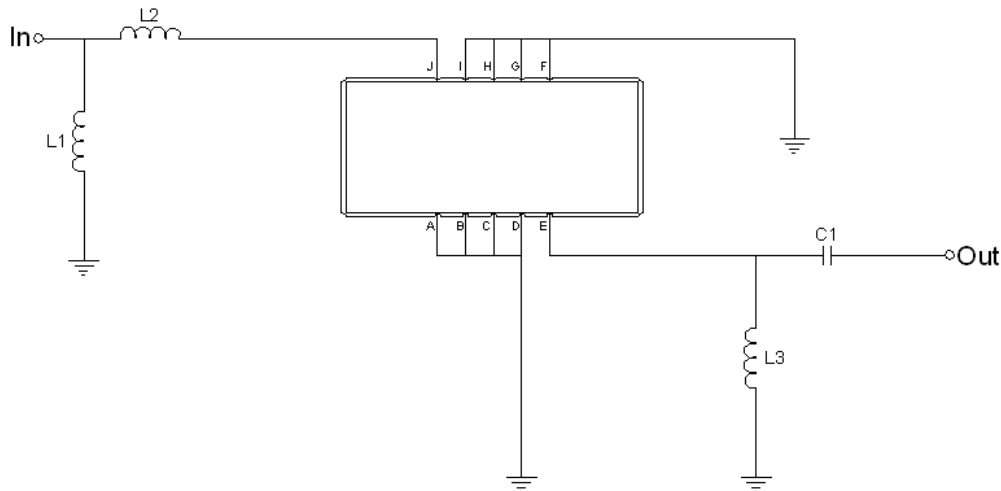
Package Dimensions



- ① SAWNICs: Brand
- ② SA06013A: Model Name
- ③ X : Date Code (Year)
- ④ Y : Date Code (Month)
- ⑤ Z : Date Code (Date)
- : Index Dot

Pin Description	
A, B, C, D, F, G, H, I	Ground
J	Input
E	Output

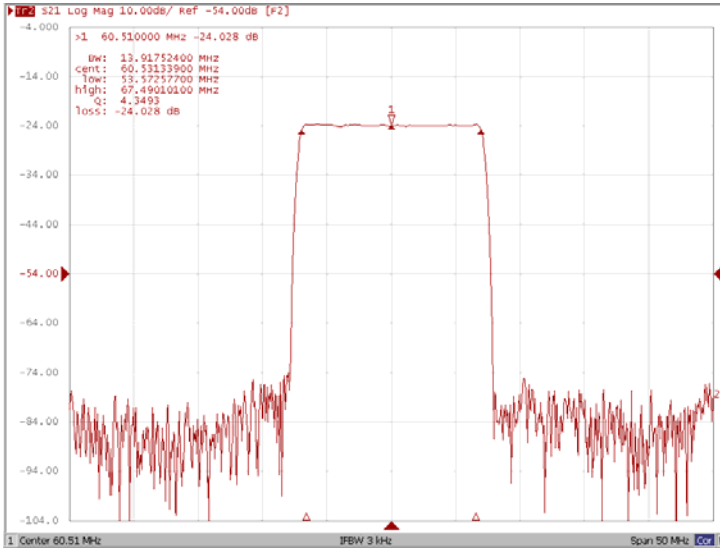
Testing Environment



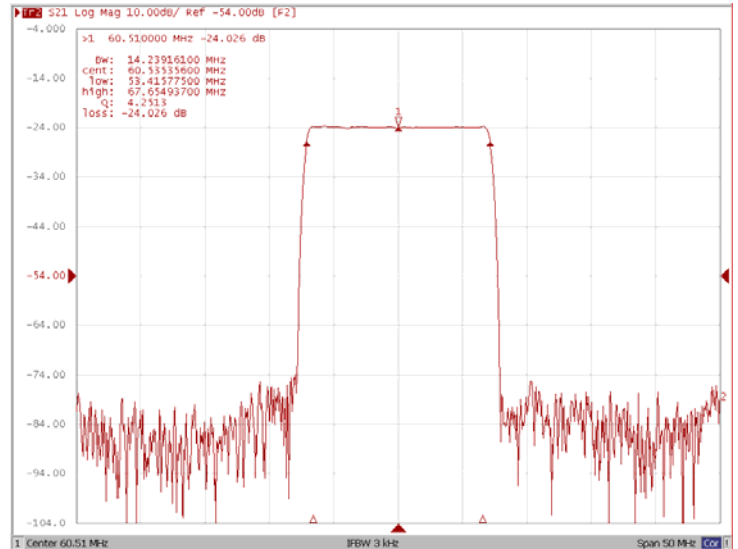
Test Fixture & Values	
Input	L1=270nH, L2=150nH
Output	L3=270nH, C1=68pF
Source/Load Impedance	50 Ω

Frequency Response

Bandwidth at -1.0 dB



Bandwidth at -3.0 dB



Bandwidth at -40.0 dB

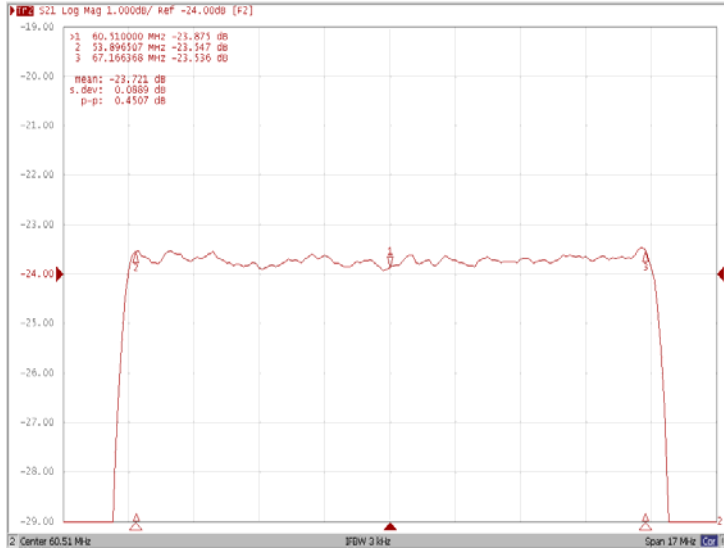


Bandwidth at -50.0 dB

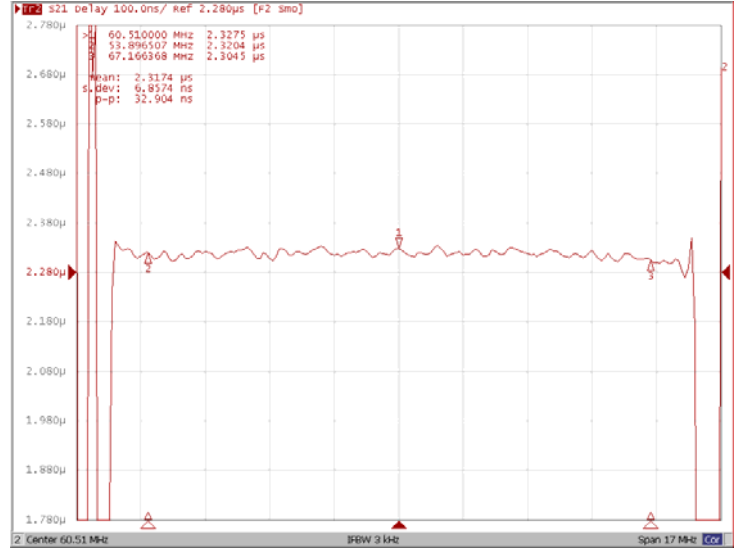


Frequency Response

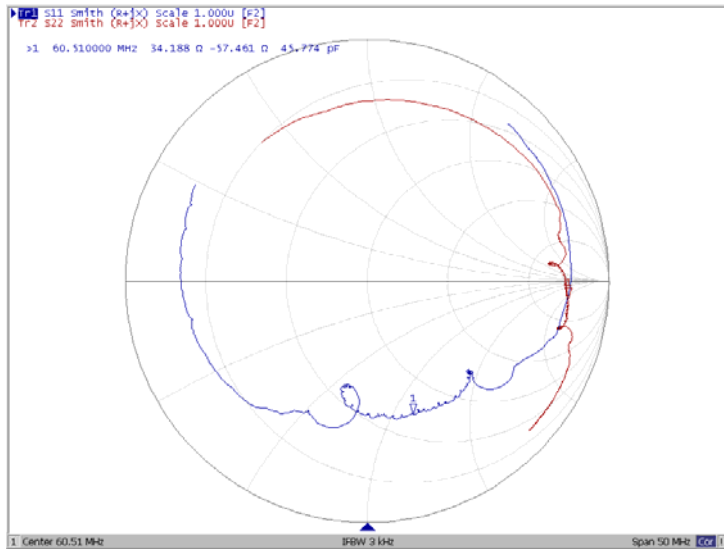
Ripple Variation



Group Delay Variation



Smith Chart



VSWR

