

Maximum Ratings

Parameters Description	Unit	Minimum	Typical	Maximum
Operating Temperature Range	°C	-30	-	80
Storage Temperature Range	°C	-40	-	85
Maximum DC Voltage	V	-	-	10
Maximum Input Power	dBm	-	-	10
Source Impedance (single ended) ⁽¹⁾	Ω	-	50	-
Load Impedance (single ended) ⁽¹⁾	Ω	-	50	-
Package type & size	V			
Length x Width	mm ²	-	13.3 x 6.5	-
Height	mm	-	-	1.8

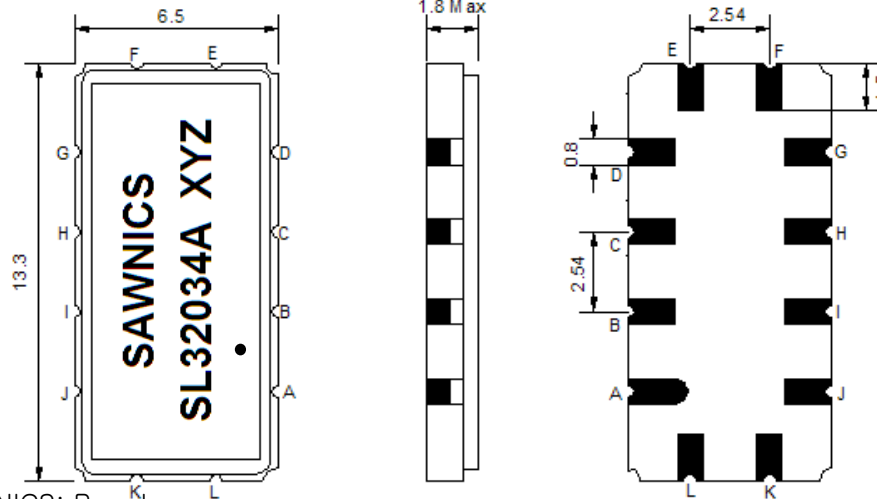
Electrical Specification

Parameters Description	Unit	Minimum	Typical	Maximum
Center Frequency (Fo)	MHz	-	320.0	-
Insertion Loss at Fo	dB	-	14.2	16.0
Group Delay Variation at Fo ± 15.0 MHz	nsec	-	26	50
Absolute Delay at Fo	usec	-	0.6	
Passband Ripple Variation at Fo ± 15.0 MHz	dB	-	0.4	0.95
Bandwidth at -1dB	MHz	33.70	34.00	-
Bandwidth at -20dB	MHz	-	39.36	-
Bandwidth at -40dB	MHz	-	41.35	41.50
Ultimate Rejection	dB	40	43	-
Temperature Coefficient	ppm/°C	-	-86	-

Notes : (1) With Matching Network (Ref. Testing Environment Circuit as shown below).

Those impedances could be modified with different impedance values and/or structures, if necessary.

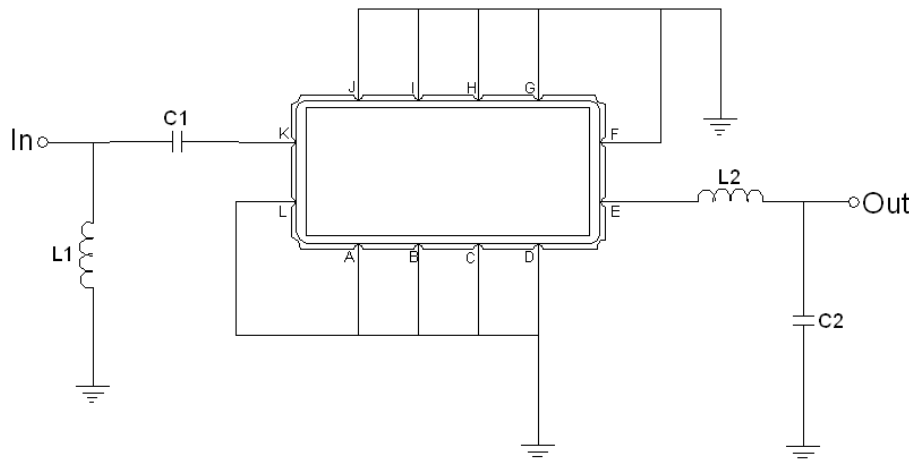
Package Dimensions



- ① SAWNICS: Brand
- ② SL32034A: Model Name
- ③ X : Date Code (Year)
- ④ Y : Date Code (Month)
- ⑤ Z : Date Code (Date)
- : Index Dot

Pin Description	
A, B, C, D, F, G, H, I, J, L	Ground
K	Input
E	Output

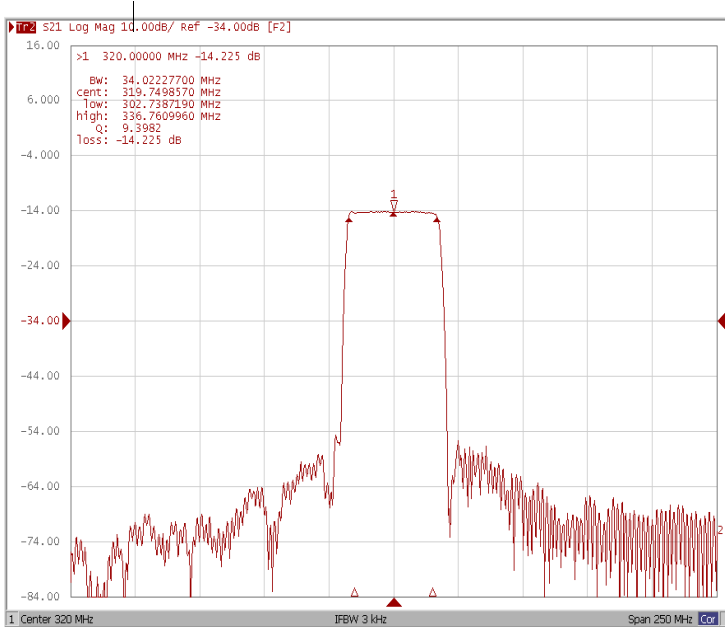
Testing Environment



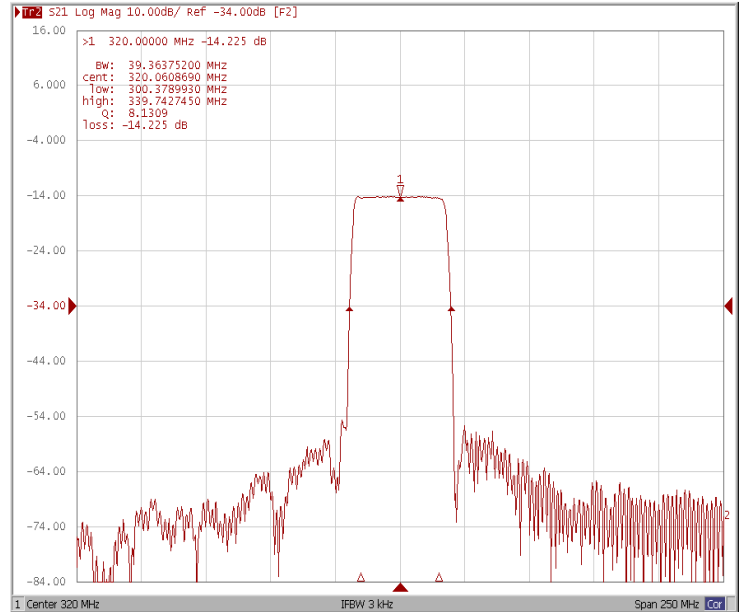
Test Fixture & Values	
Input	L1 = 27nH, C1 = 15F
Output	L2 = 12nH, C2 = 24pF
Source/Load Impedance	50 Ω

Frequency Response

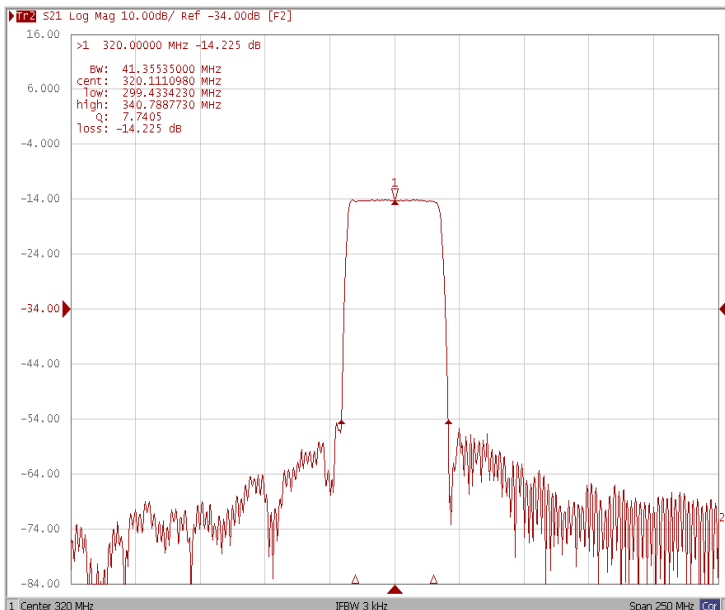
Bandwidth at -1.0 dB



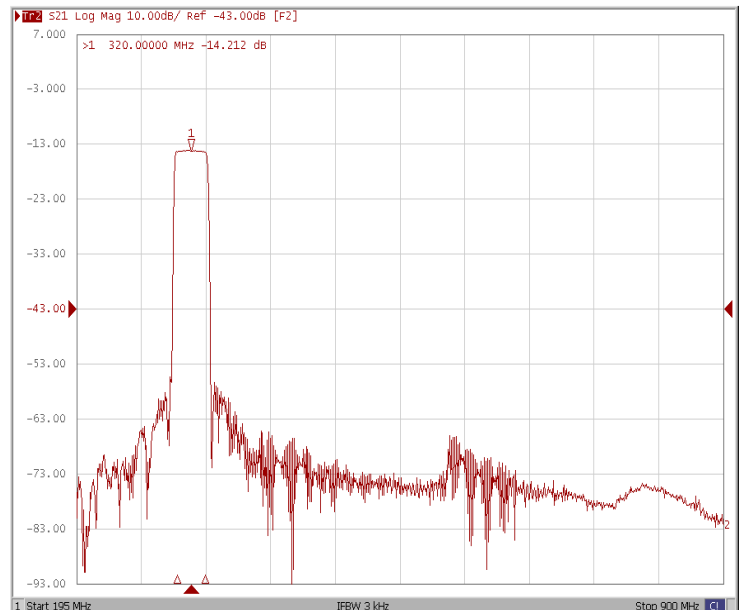
Bandwidth at -20 dB



Bandwidth at -40 dB

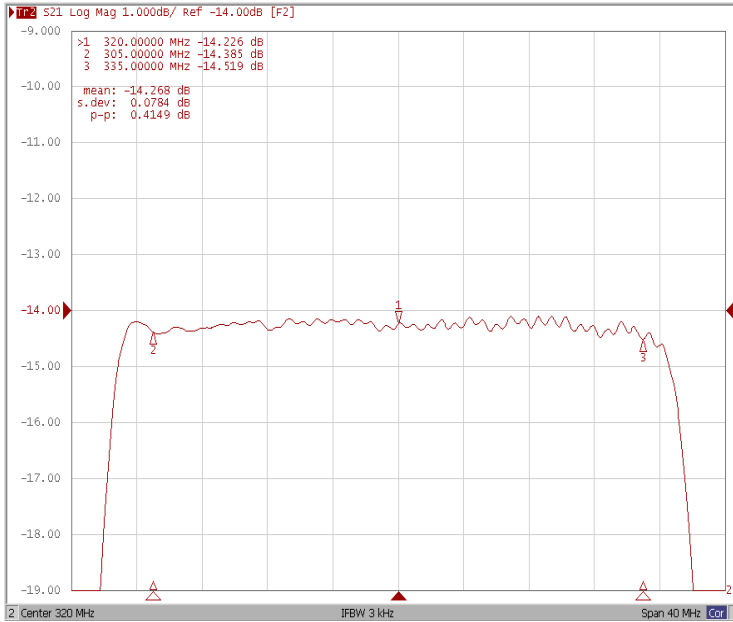


Wide Band

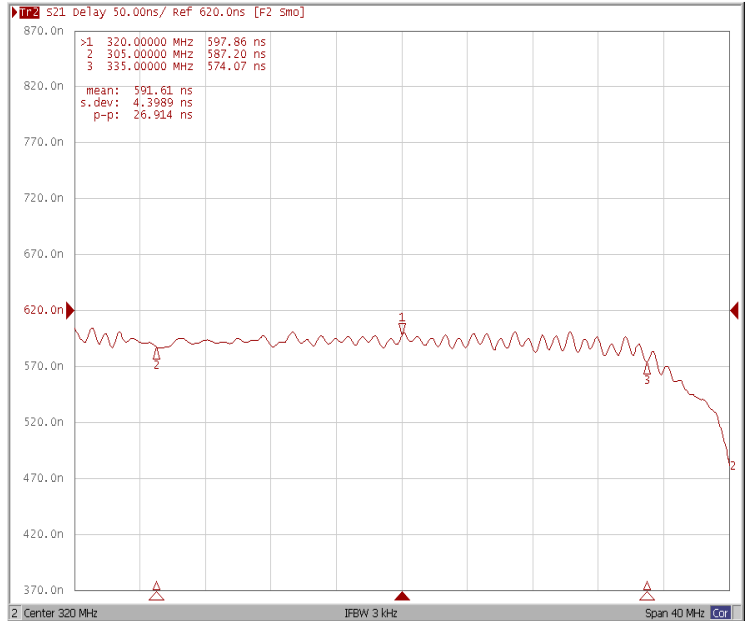


Frequency Response

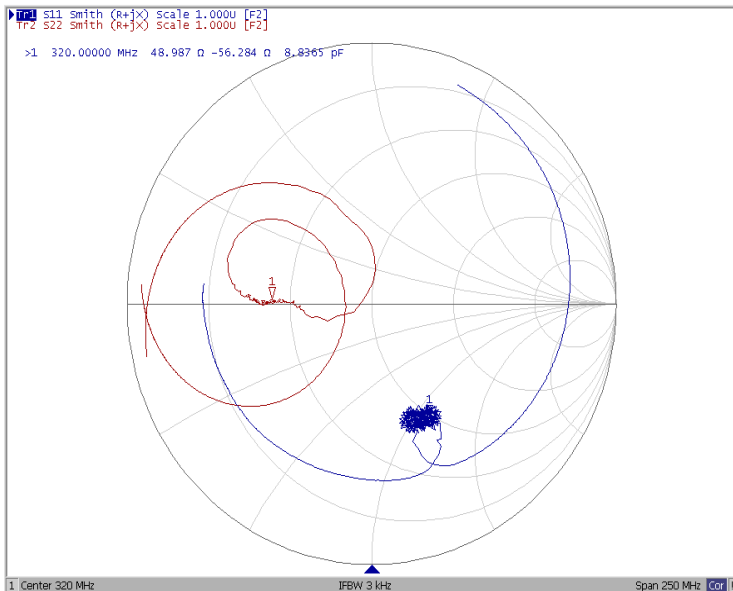
Ripple Variation Fo±15.0MHz



Group Delay Variation Fo±15.0MHz



Smith Chart



VSWR

