

Maximum Ratings

| Parameters Description | Unit | Minimum | Typical | Maximum |
|--|-----------------|---------|-------------|---------|
| Operating Temperature Range | °C | - | 25 | - |
| Storage Temperature Range | °C | -40 | - | 85 |
| Maximum DC Voltage | V | - | - | 10 |
| Maximum Input Power | dBm | - | - | 10 |
| Source Impedance (single ended) ⁽¹⁾ | Ω | - | 50 | - |
| Load Impedance (single ended) ⁽¹⁾ | Ω | - | 50 | - |
| Package type & size | D | | | |
| Length x Width | mm ² | - | 20.0 x 12.6 | - |
| Height | mm | - | - | 5.05 |

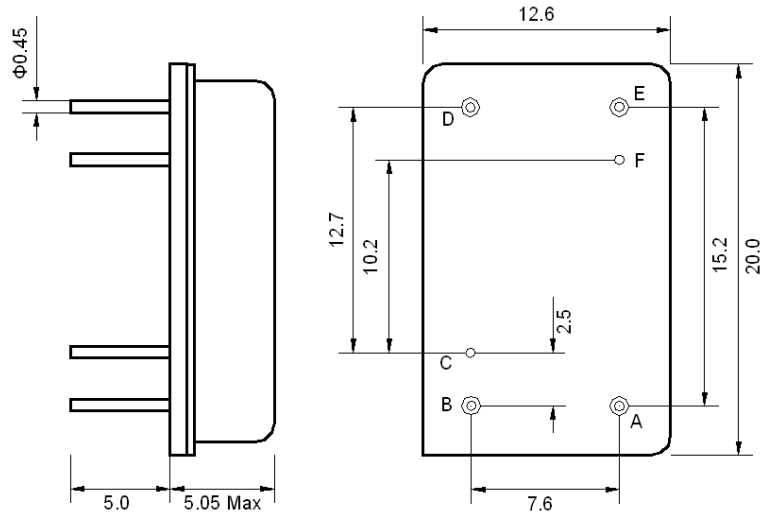
Electrical Specification

| Parameters Description | Unit | Minimum | Typical | Maximum |
|---|--------|---------|---------|---------|
| Center Frequency (Fo) | MHz | - | 260.0 | - |
| Insertion Loss at Fo | dB | - | 30.5 | 32.0 |
| Group Delay Variation at Fo ± 14.52 MHz | nsec | - | 42 | 70 |
| Absolute Delay at Fo | usec | - | 2.84 | - |
| Passband Ripple Variation at Fo ± 14.52 MHz | dB | - | 0.7 | 1.1 |
| Bandwidth at -1dB | MHz | 30.00 | 30.25 | - |
| Bandwidth at -3dB | MHz | 30.40 | 30.55 | - |
| Bandwidth at -40dB | MHz | - | 31.90 | 32.00 |
| Bandwidth at -50dB | MHz | - | 32.06 | - |
| Ultimate Rejection | dB | 50 | 55 | - |
| Temperature Coefficient | ppm/°C | - | -18 | - |

Notes : (1) With Matching Network (Ref. Testing Environment Circuit as shown below).

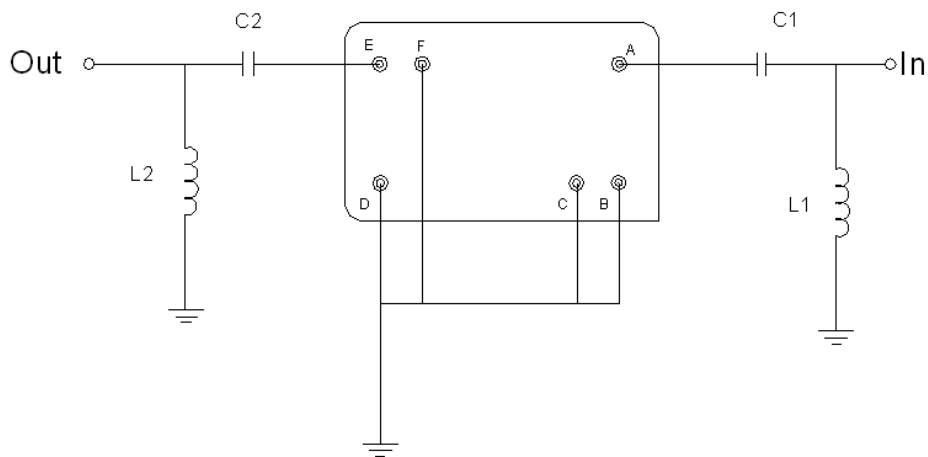
Those impedances could be modified with different impedance values and/or structures, if necessary.

Package Dimensions



| Pin Description | |
|-----------------|--------|
| B, C, D, F | Ground |
| A | Input |
| E | Output |

Testing Environment



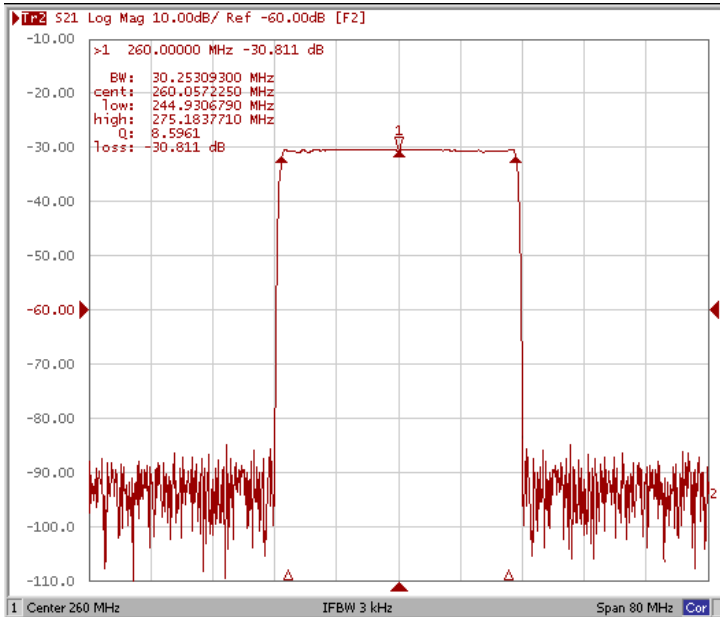
| Test Fixture & Values | |
|-----------------------|--------------------------|
| Input | L1 = 6.8 nH, C1 = 330 pF |
| Output | L2 = 8.2 nH, C2 = 270 pF |
| Source/Load Impedance | 50 |

Frequency Characteristics

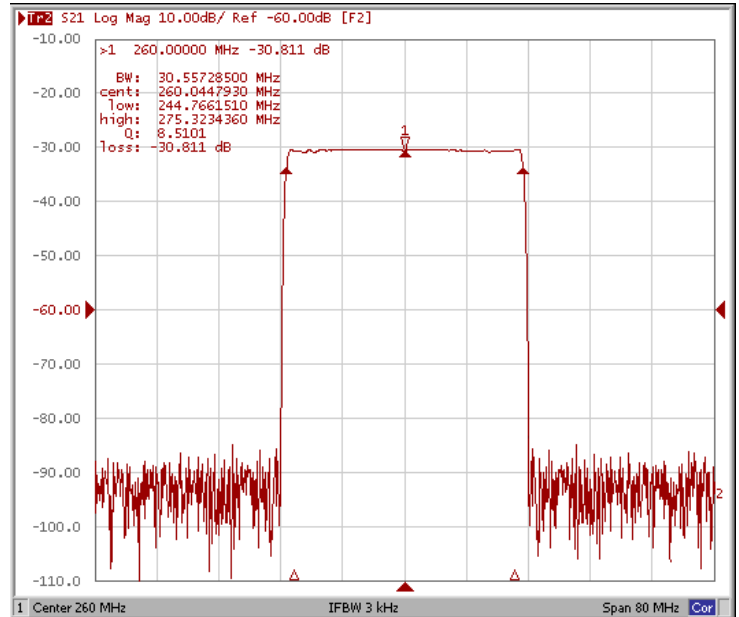
* Room Temperature: +25°C

Frequency Response

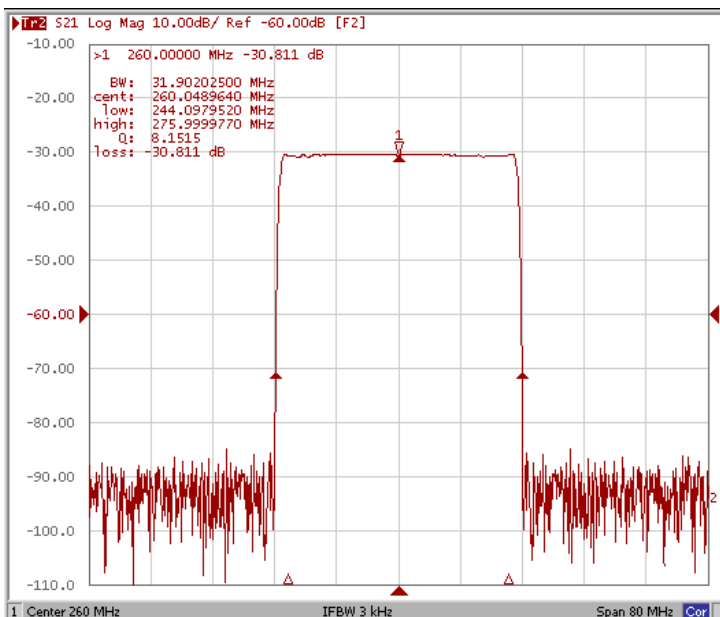
Bandwidth at -1.0 dB



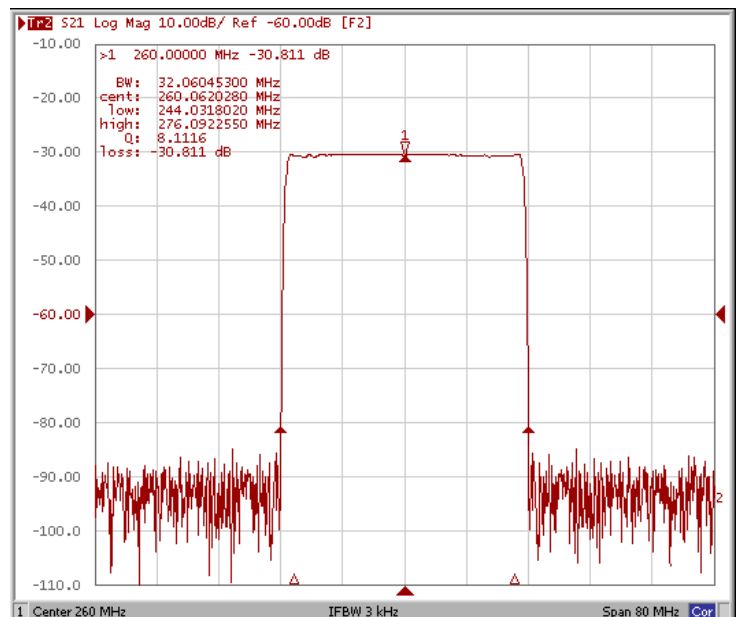
Bandwidth at -3.0 dB



Bandwidth at -40.0 dB



Bandwidth at -50.0 dB

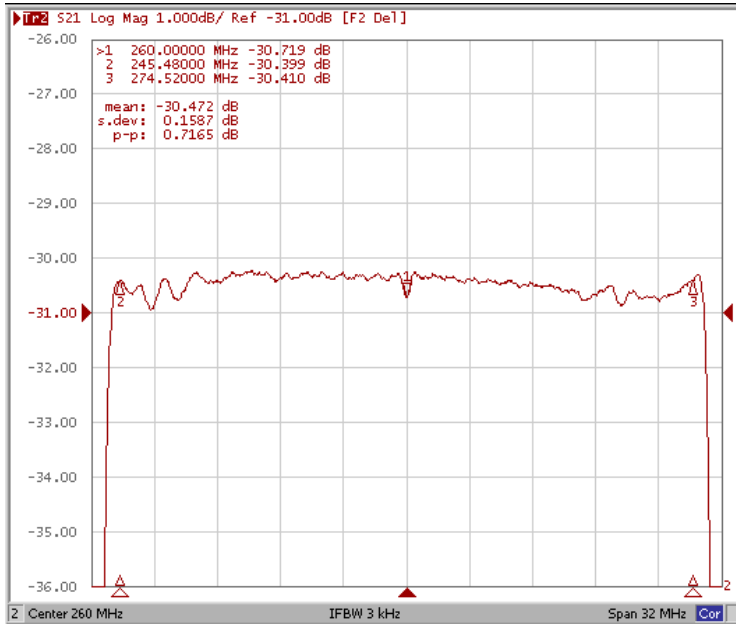


Frequency Characteristics

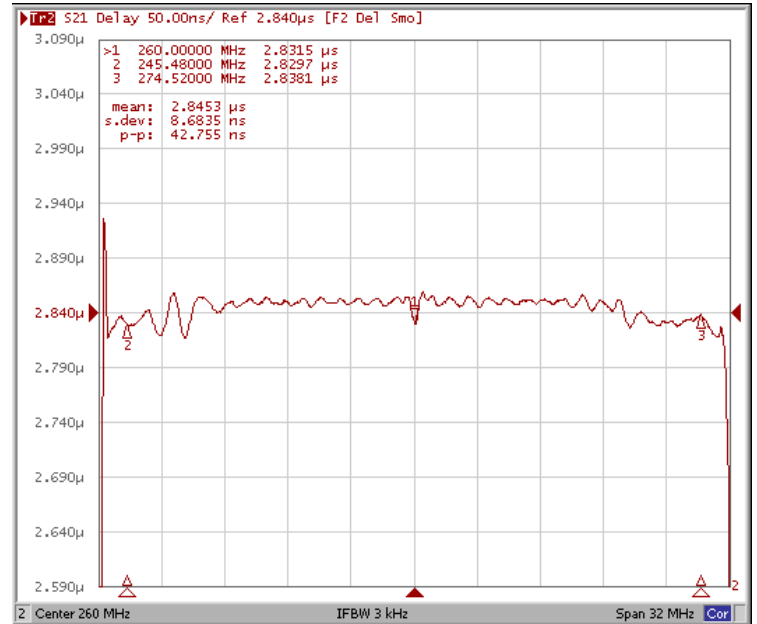
* Room Temperature: +25°C

Frequency Response

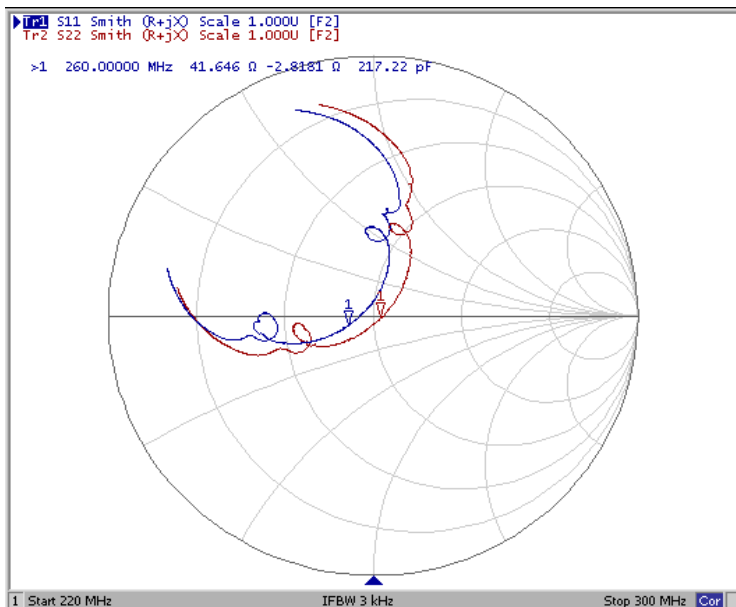
Ripple Variation Fo±14.52MHz



Group Delay Variation Fo±14.52MHz



Smith Chart



VSWR

