

Maximum Ratings

Parameters Description	Unit	Minimum	Typical	Maximum
Operating Temperature Range	°C	-5	-	70
Storage Temperature Range	°C	-40	-	85
Maximum DC Voltage	V	-	-	10
Maximum Input Power	dBm	-	-	10
Source Impedance (single ended) ⁽¹⁾	Ω	-	50	-
Load Impedance (single ended) ⁽¹⁾	Ω	-	50	-
Package type & size	V			
Length x Width	mm ²	-	13.3 x 6.5	-
Height	mm	-	-	1.8

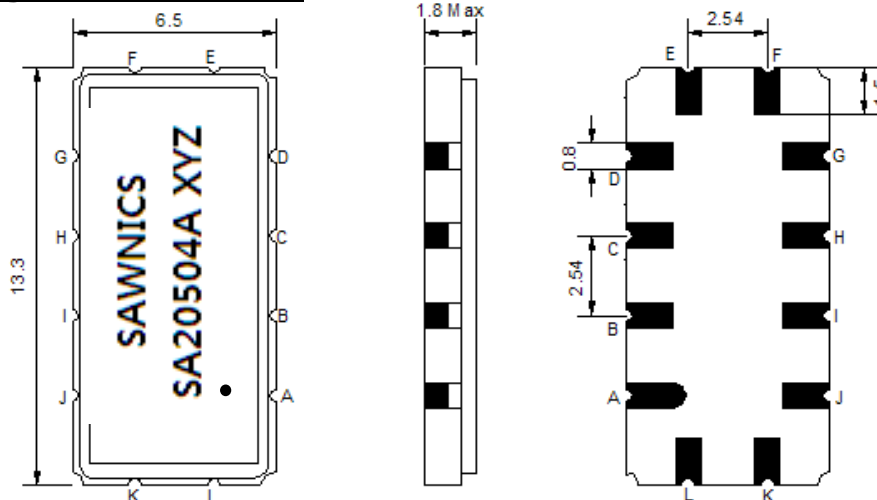
Electrical Specification

Parameters Description	Unit	Minimum	Typical	Maximum
Center Frequency (Fo)	MHz	204.85	205.0	205.15
Insertion Loss at Fo	dB	-	23.0	25.0
Amplitude Ripple within fo ±2.2 MHz	dB _{p-p}	-	0.5	1.0
Group Delay Variation within fo ±2.2 MHz	nsec	-	55	100
Absolute Delay at Fo	µsec	-	1.81	2.0
Bandwidth at -1.0 dB	MHz	4.40	4.80	-
Bandwidth at -3.0 dB	MHz	-	5.18	-
Bandwidth at -40.0 dB	MHz	-	6.42	6.60
Ultimate Rejection	dB	40	47	-
Temperature Coefficient	ppm/°C	-	-0.03	-

Notes : (1) With Matching Network (Ref. Testing Environment Circuit as shown below).

Those impedances could be modified with different impedance values and/or structures, if necessary.

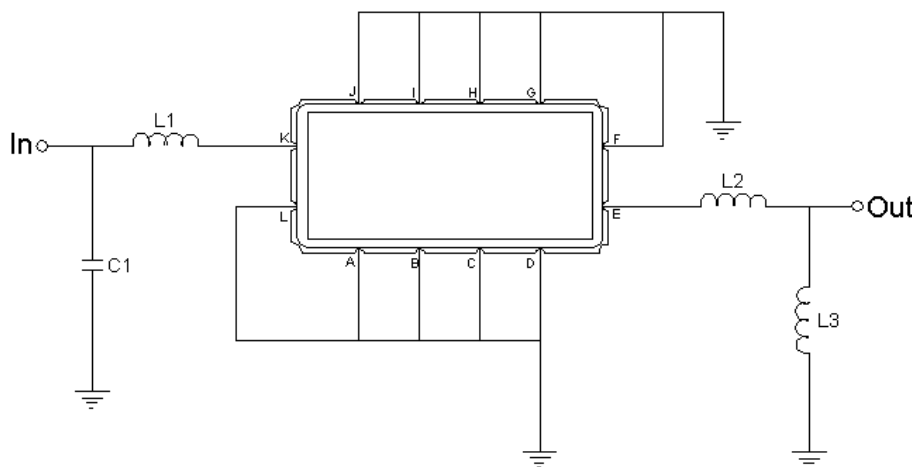
Package Dimensions



- ① SAWNICS: Brand
- ② SA20504A: Model Name
- ③ X : Date Code (Year)
- ④ Y : Date Code (Month)
- ⑤ Z : Date Code (Date)
- : Index Dot

Pin Description	
A, B, C, D, F, G, H, I, J, L	Ground
K	Input
E	Output

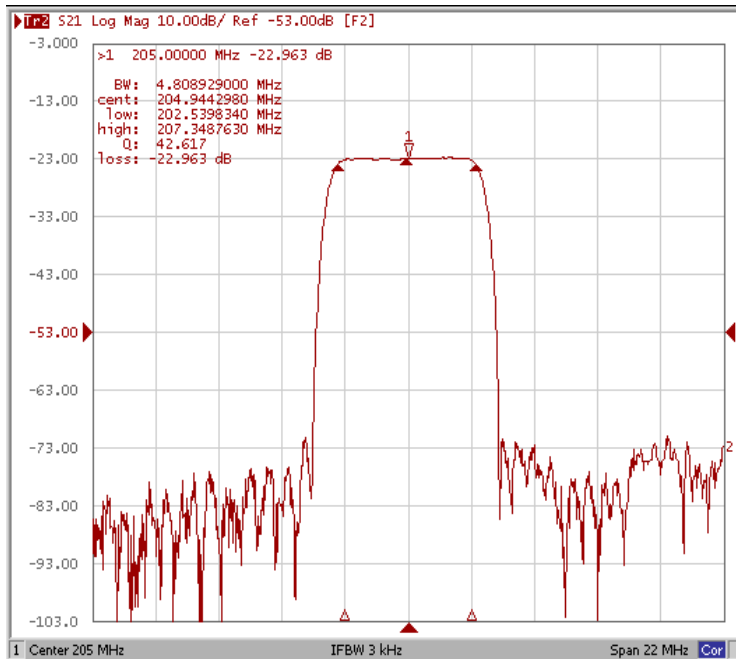
Testing Environment



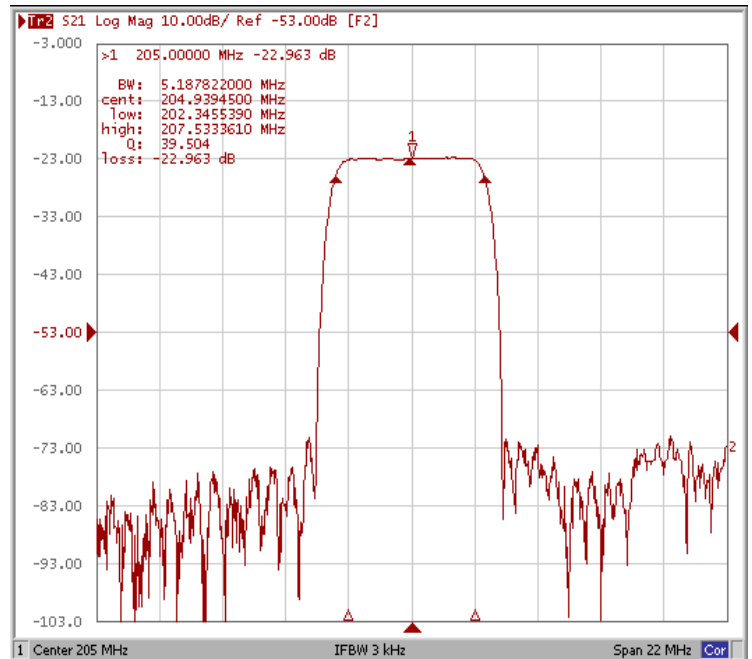
Test Fixture & Values	
Input	L1=39nH, C1=36pF
Output	L2=6.8nH, L3=12nH
Source/Load Impedance	50 Ω

Frequency Response

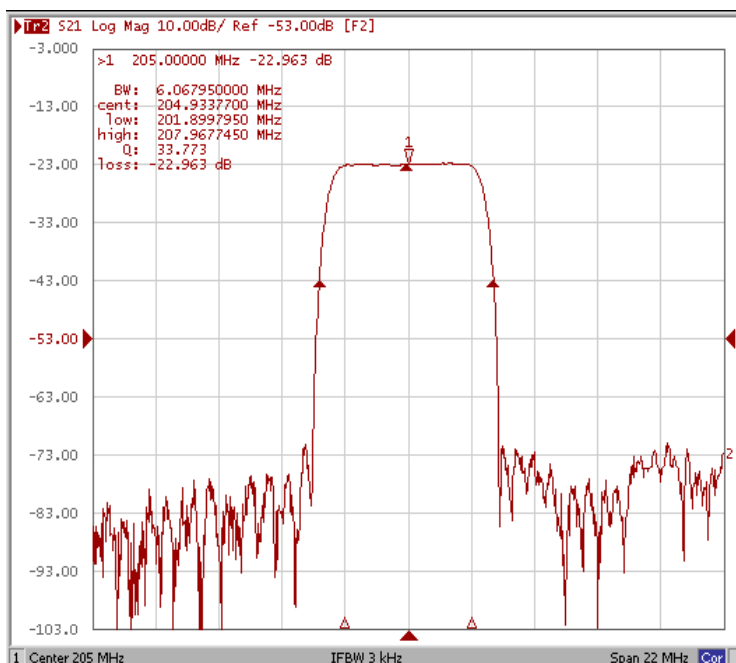
Bandwidth at -1.0 dB



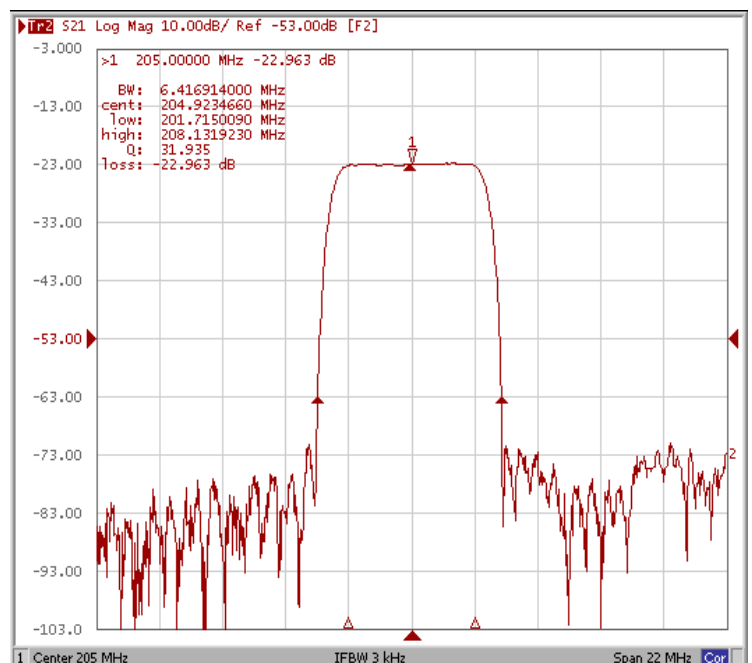
Bandwidth at -3.0 dB



Bandwidth at -20.0 dB

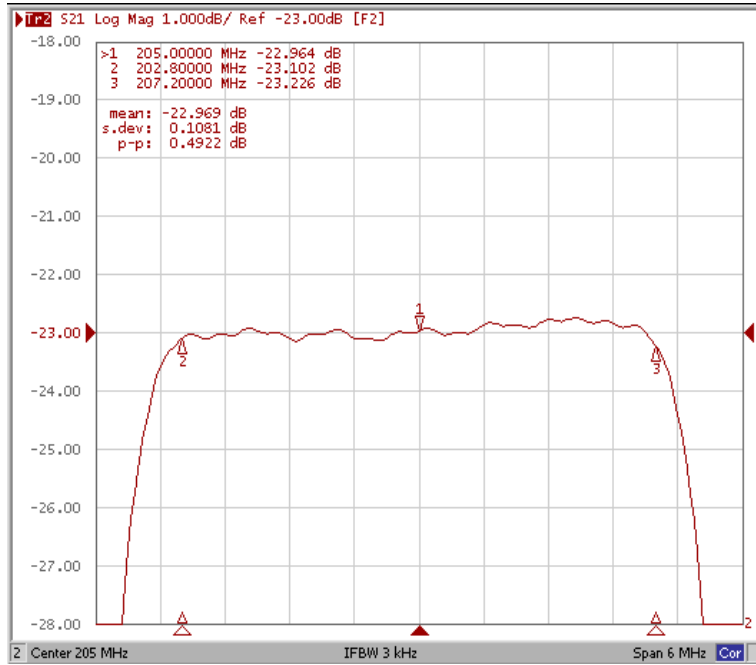


Bandwidth at -40.0 dB

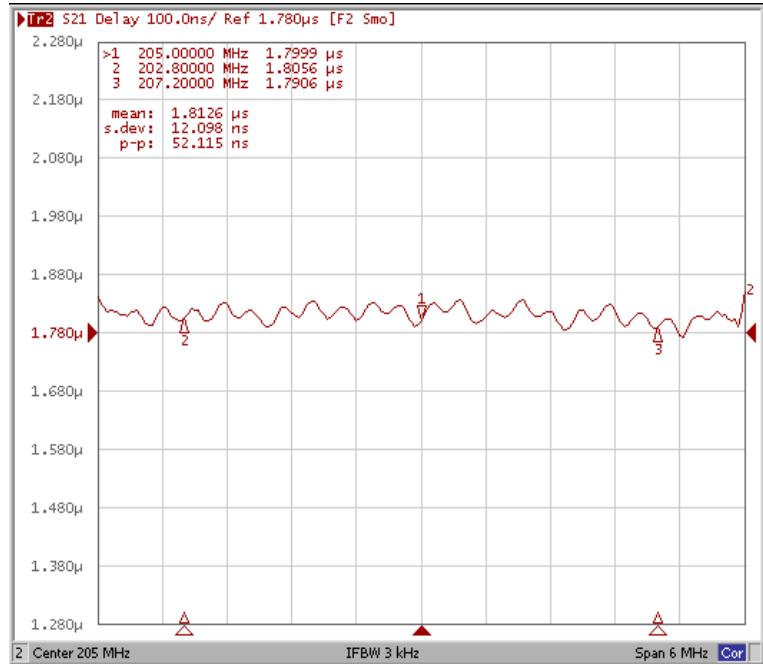


Frequency Response

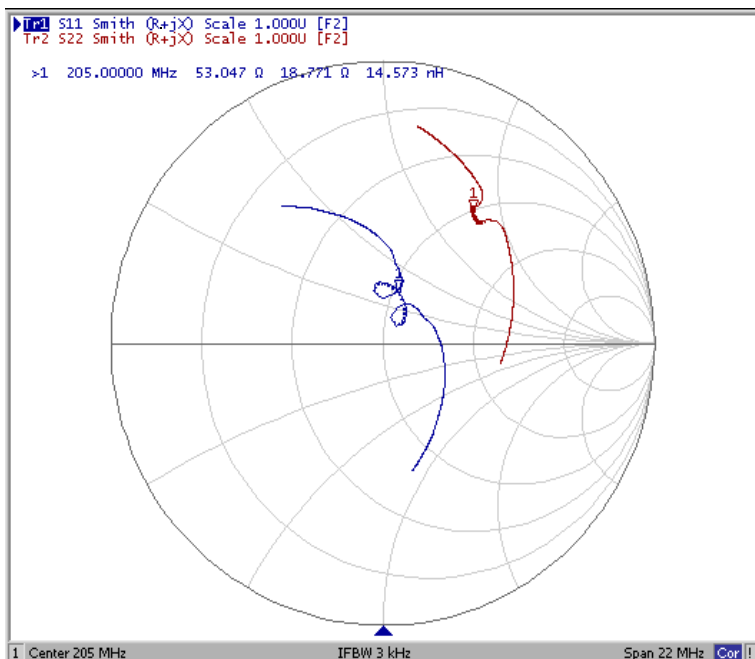
Ripple Variation $F_0 \pm 2.2\text{MHz}$



Group Delay Variation $F_0 \pm 2.2\text{MHz}$



Smith Chart



SWR

