

## □ Electrical Characteristics

### Maximum Ratings

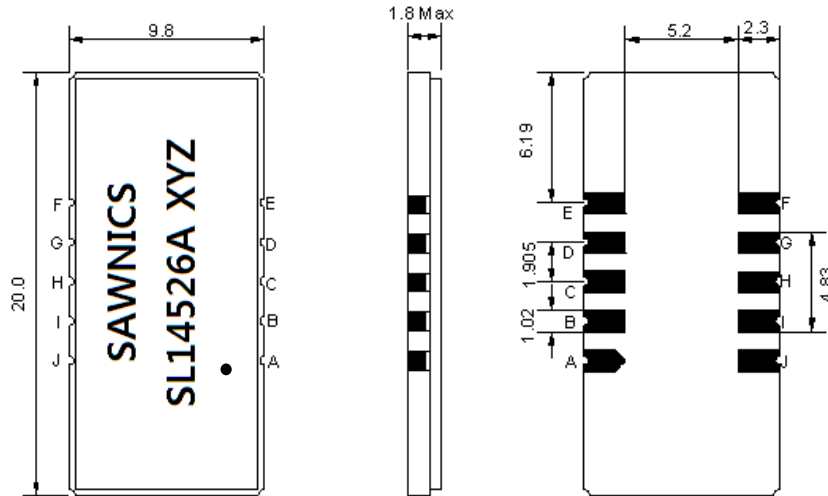
Parameters Description	Unit	Minimum	Typical	Maximum
Operation Temperature Range	°C	-10	-	70
Storage Temperature Range	°C	-30	-	80
Maximum DC Voltage	V	-	-	10
Maximum Input Power	dBm	-	-	10
Source Impedance (single ended) <sup>(1)</sup>	Ω	-	50	-
Load Impedance (single ended) <sup>(1)</sup>	Ω	-	50	-
Package type & size	D1			
Length x Width	mm <sup>2</sup>	-	20.0 x 9.8	-
Height	mm	-	-	1.8

### Electrical Specification

Parameters Description	Unit	Minimum	Typical	Maximum
Center Frequency (Fo)	MHz	-	145.0	-
Insertion Loss at Fo	dB	-	17.6	21.0
Group Delay Variation (Fo±12.48MHz)	ns	-	45	70
Absolute Delay	us	-	1.05	-
Passband Ripple (Fo±12.48MHz)	dB	-	0.42	0.90
Bandwidth at -1dB	MHz	26.50	27.05	-
Bandwidth at -10dB	MHz	-	28.78	28.96
Bandwidth at -20dB	MHz	-	29.65	-
Bandwidth at -40dB	MHz	-	30.90	-
Ultimate Rejection	dB	-	42	-
Temperature coefficient	ppm/°C	-	-86	-

**Notes :** (1) With Matching Network (Ref. Testing Environment Circuit as shown below).  
Those impedances could be modified with different impedance values and/or structures, if necessary.

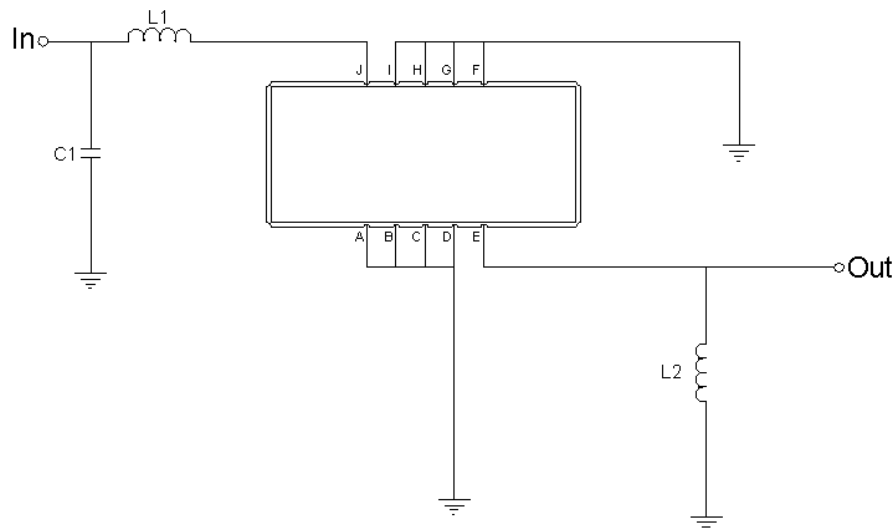
## Package Dimensions



- ① SAWNICS: Brand
- ② SL14526A: Model Name
- ③ X : Date Code (Year)
- ④ Y : Date Code (Month)
- ⑤ Z : Date Code (Date)
- : Index Dot

Pin Description	
A, B, C, D, F, G, H, I	Ground
J	Input
E	Output

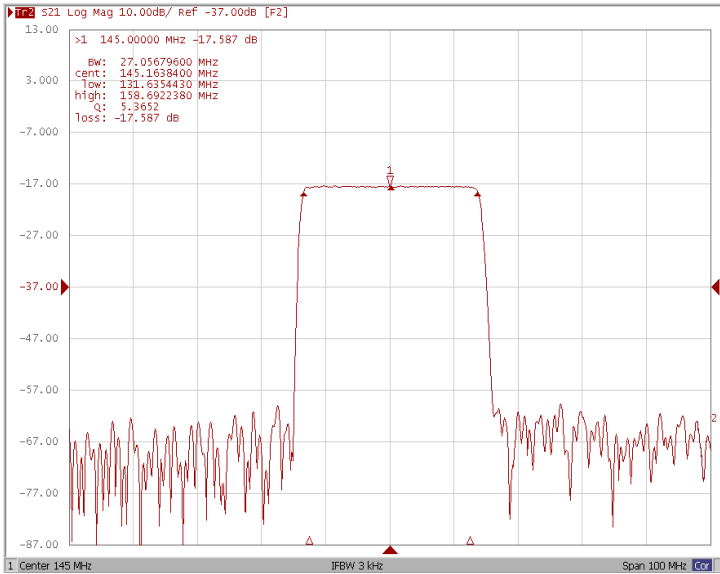
## Testing Environment



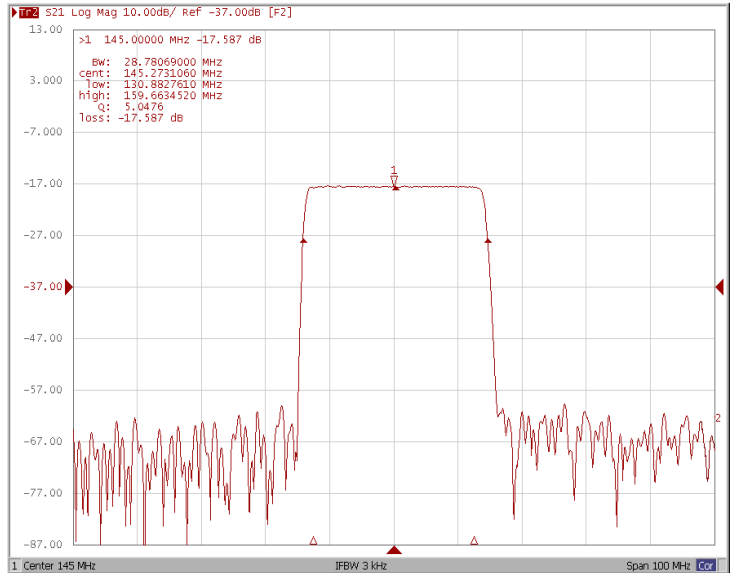
Test Fixture & Values	
Input	L1=39nH, C1=18pF
Output	L2=39nH
Source/Load Impedance	50 Ω

## Frequency Response

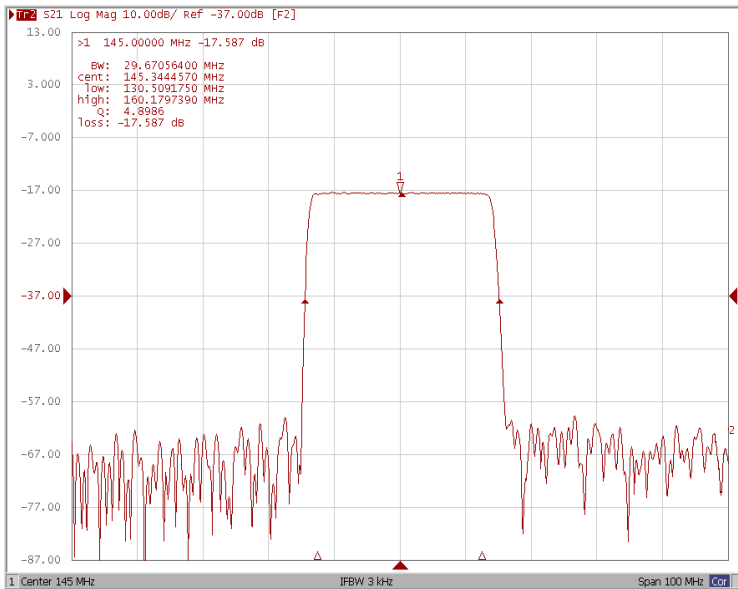
### Bandwidth at -1.0 dB



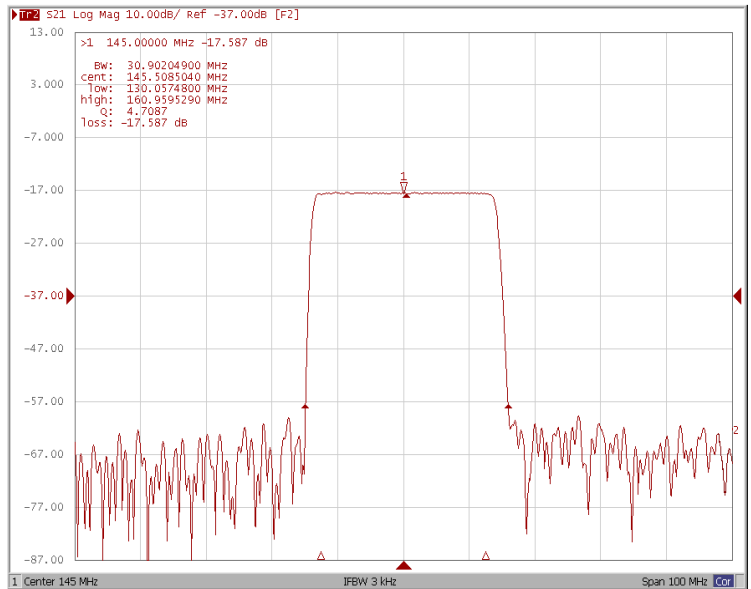
### Bandwidth at -10.0 dB



### Bandwidth at -20.0 dB



### Bandwidth at -40.0 dB

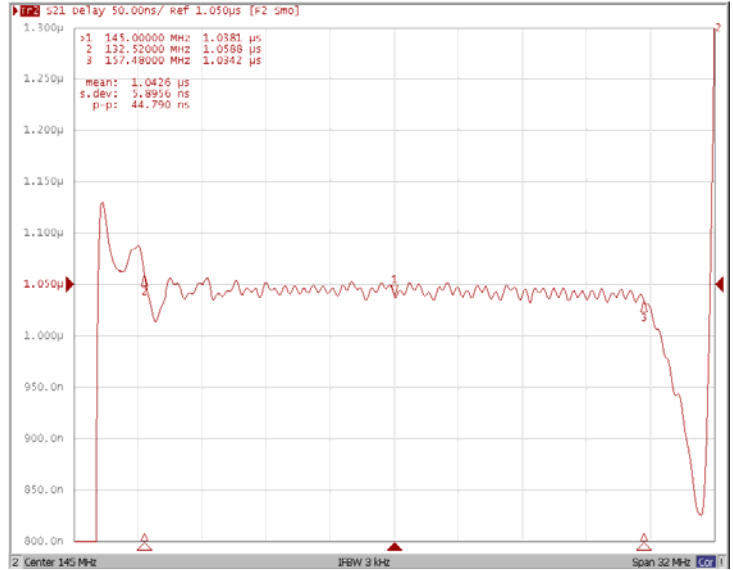


## Frequency Response

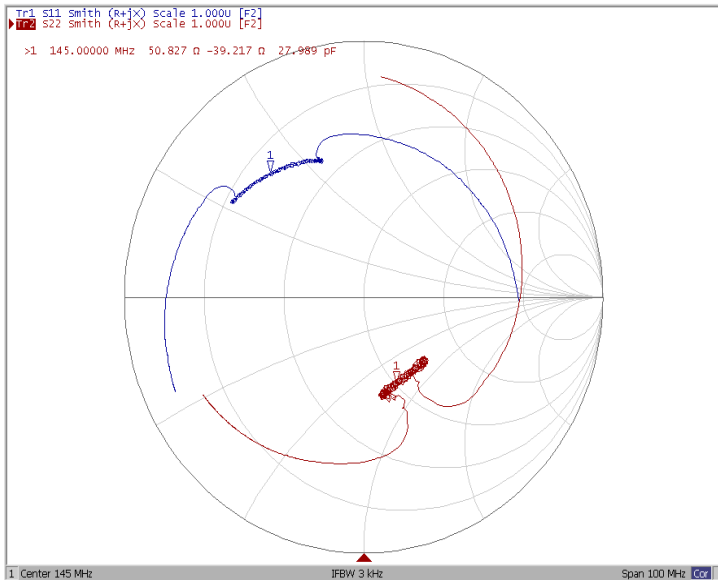
Ripple Variation Fo±12.48MHz



Group Delay Variation Fo±12.48MHz



Smith Chart



VSWR

