

Maximum Ratings

| Parameters Description | Unit | Minimum | Typical | Maximum |
|--|-----------------|---------|------------|---------|
| Operation Temperature Range | °C | -10 | - | 70 |
| Storage Temperature Range | °C | -40 | - | 85 |
| Maximum DC Voltage | V | - | - | 10 |
| Maximum Input Power | dBm | - | - | 10 |
| Source Impedance (single ended) ⁽¹⁾ | Ω | - | 50 | - |
| Load Impedance (single ended) ⁽¹⁾ | Ω | - | 50 | - |
| Package type & size | D1 | | | |
| Length x Width | mm ² | - | 20.0 x 9.8 | - |
| Height | mm | - | - | 1.8 |

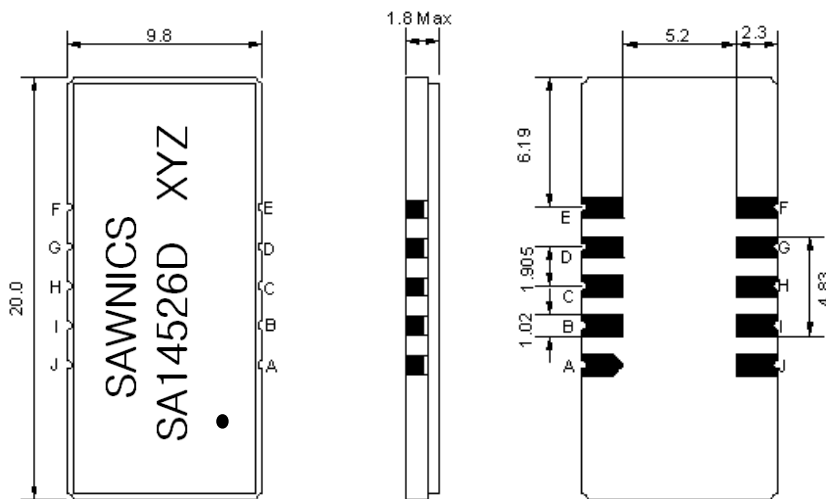
Electrical Specification

| Parameters Description | Unit | Minimum | Typical | Maximum |
|------------------------------------|--------|---------|---------|---------|
| Center Frequency (Fo) | MHz | - | 145.0 | - |
| Insertion Loss at Fo | dB | - | 24.50 | 26.00 |
| Group Delay Variation (Fo±12.5MHz) | nsec | - | 35 | 60 |
| Absolute Delay | usec | - | 2.33 | 2.50 |
| Passband Ripple (Fo±12.5MHz) | dB | - | 0.62 | 1.00 |
| Bandwidth at -1dB | MHz | 26.15 | 26.30 | - |
| Bandwidth at -3dB | MHz | - | 26.60 | - |
| Bandwidth at -40dB | MHz | - | 27.90 | 28.05 |
| Bandwidth at -50dB | MHz | - | 28.05 | - |
| Ultimate Rejection | dB | 50 | 55 | - |
| Temperature coefficient | ppm/°C | - | -72 | - |

Notes : (1) With Matching Network (Ref. Testing Environment Circuit as shown below).

Those impedances could be modified with different impedance values and/or structures, if necessary.

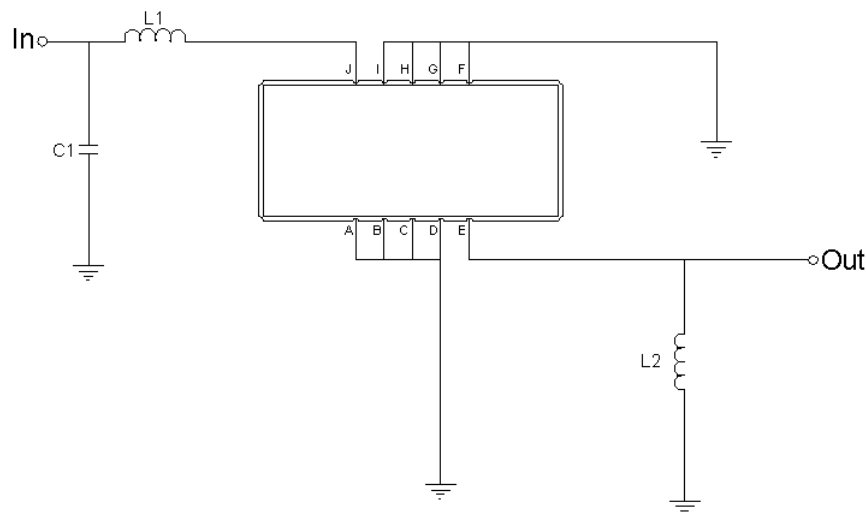
Package Dimensions



- ① SAWNICS: Brand
- ② SA14526D: Model Name
- ③ X : Date Code (Year)
- ④ Y : Date Code (Month)
- ⑤ Z : Date Code (Date)
- : Index Dot

| Pin Description | |
|------------------------|--------|
| A, B, C, D, F, G, H, I | Ground |
| J | Input |
| E | Output |

Testing Environment

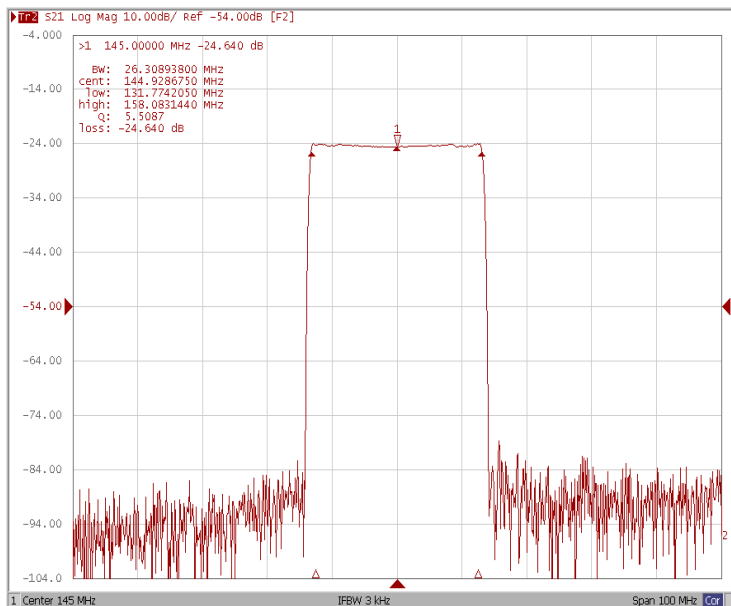


| Test Fixture & Values | |
|-----------------------|-----------------|
| Input | L1=39nH, C1=3pF |
| Output | L2=47nH |
| Source/Load Impedance | 50 Ω |

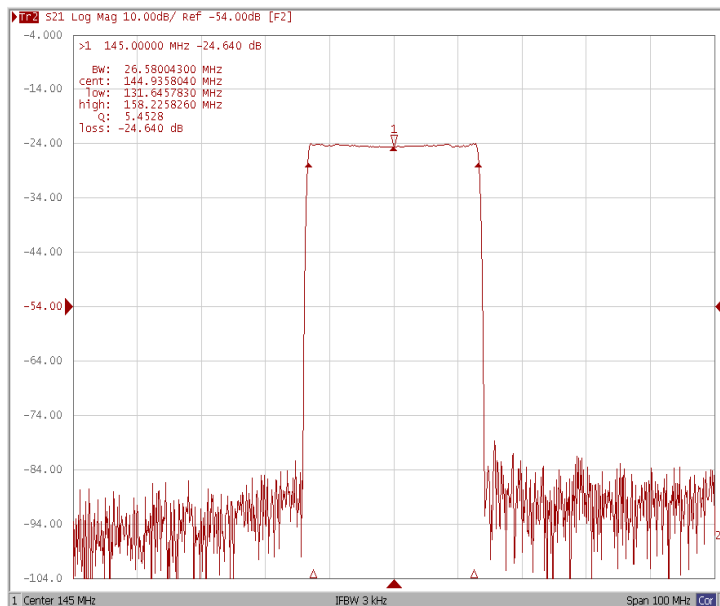
Frequency Characteristics

Frequency Response

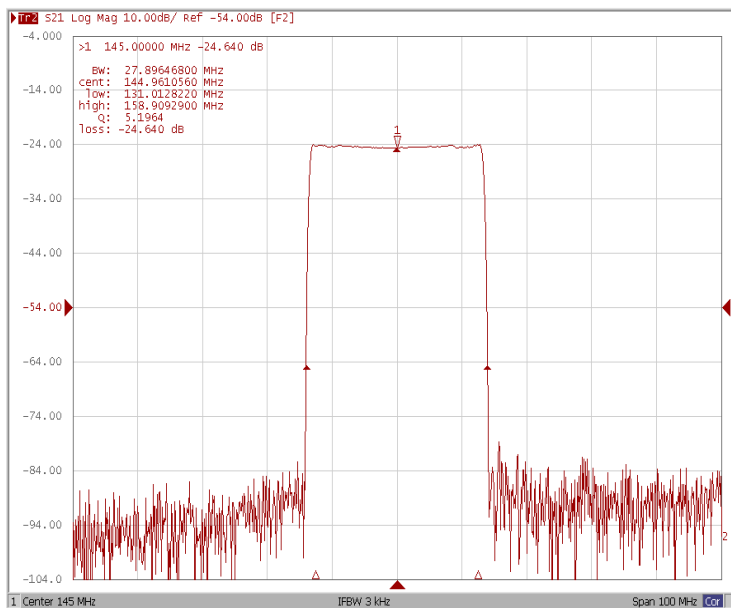
Bandwidth at -1.0 dB



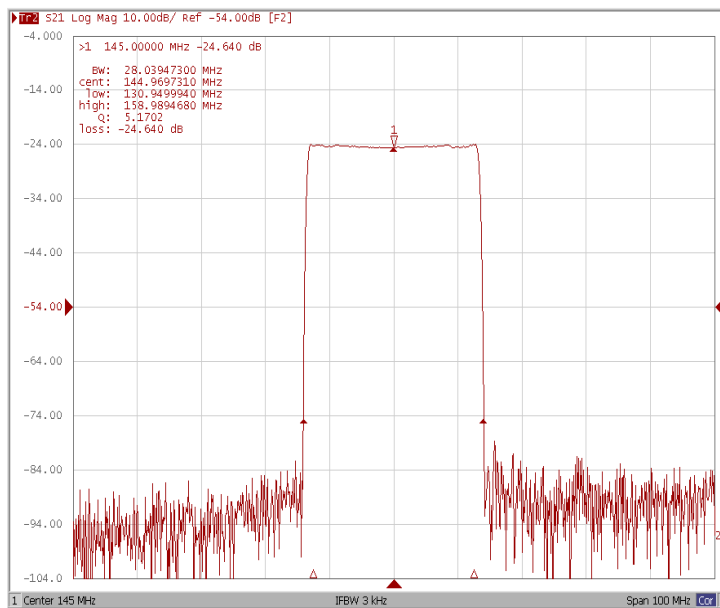
Bandwidth at -3.0 dB



Bandwidth at -40.0 dB

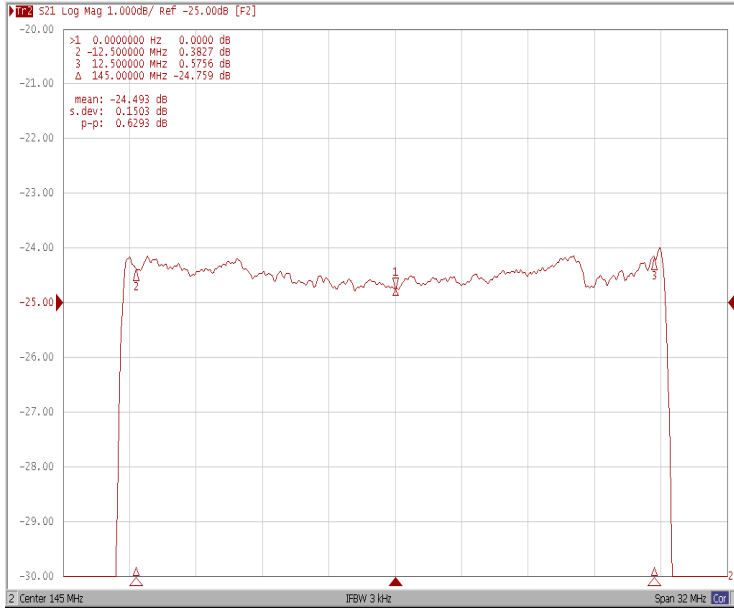


Bandwidth at -50.0 dB

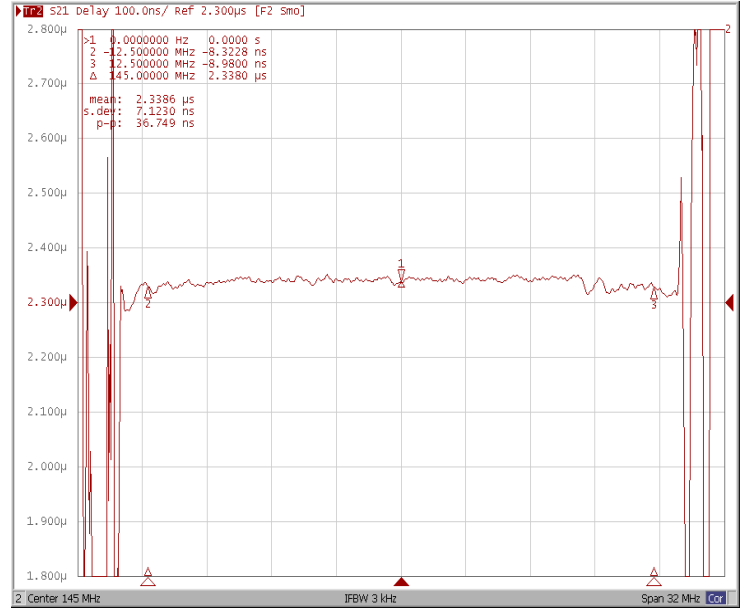


Frequency Response

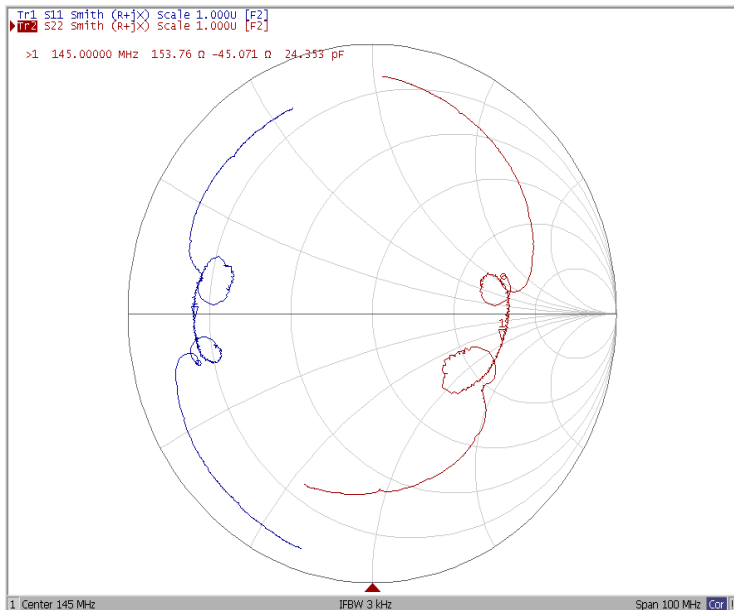
Ripple Variation Fo±12.5MHz



Group Delay Variation Fo±12.5MHz



Smith Chart



VSWR

