

Maximum Ratings

Parameters Description	Unit	Minimum	Typical	Maximum
Operating Temperature Range	°C	-5	-	70
Storage Temperature Range	°C	-40	-	85
Maximum DC Voltage	V	-	-	10
Maximum Input Power	dBm	-	-	10
Source Impedance (single ended) ⁽¹⁾	Ω	-	50	-
Load Impedance (single ended) ⁽¹⁾	Ω	-	50	-
Package type & size	D1			
Length x Width	mm ²	-	20.0 x 9.8	-
Height	mm	-	-	1.8

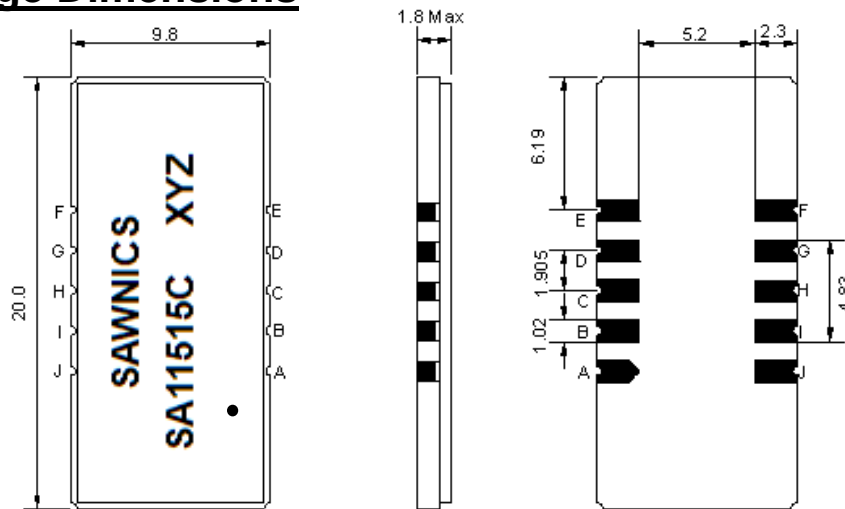
Electrical Specification

Parameters Description	Unit	Minimum	Typical	Maximum
Center Frequency (Fo)	MHz	-	115.0	-
Insertion Loss at Fo	dB	-	22.2	24.0
Group Delay Variation at Fo ± 7.47 MHz	nsec	-	29	80
Absolute Delay at Fo	usec	-	2.31	-
Passband Ripple Variation at Fo ± 7.47 MHz	dB	-	0.56	1.00
Bandwidth at -1dB	MHz	15.75	15.90	-
Bandwidth at -3dB	MHz	-	16.18	-
Bandwidth at -40dB	MHz	-	17.50	17.65
Ultimate Rejection	dB	-	52	-
Temperature Coefficient	ppm/°C	-	-72	-

Notes : (1) With Matching Network (Ref. Testing Environment Circuit as shown below).

Those impedances could be modified with different impedance values and/or structures, if necessary.

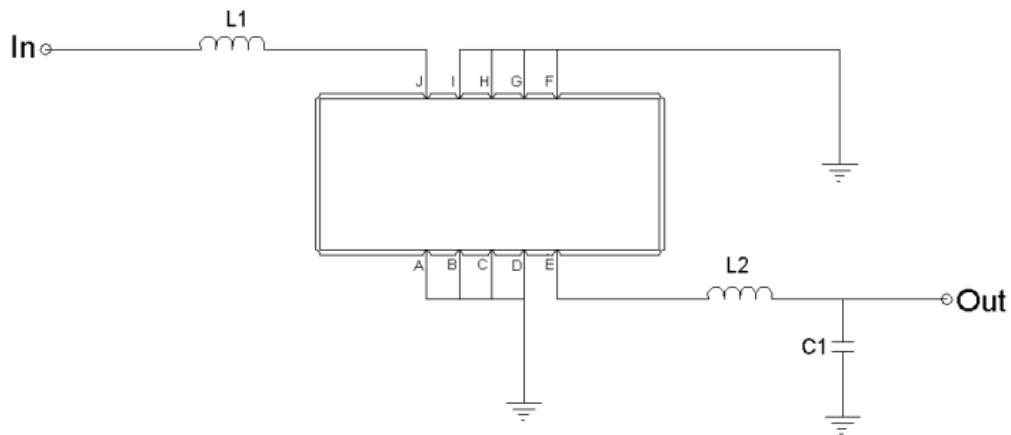
Package Dimensions



- ① SAWNICS: Brand
- ② SA11515C: Model Name
- ③ X : Date Code (Year)
- ④ Y : Date Code (Month)
- ⑤ Z : Date Code (Date)
- : Index Dot

Pin Description	
A, B, C, D, F, G, H, I	Ground
J	Input
E	Output

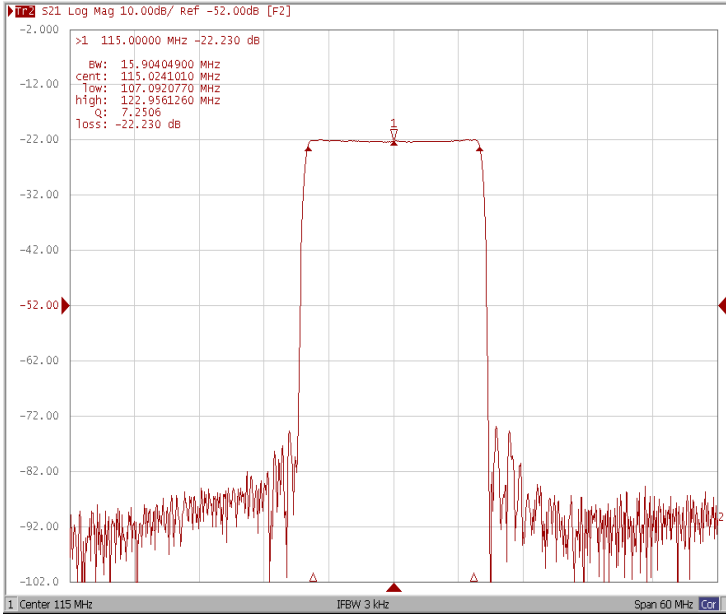
Testing Environment



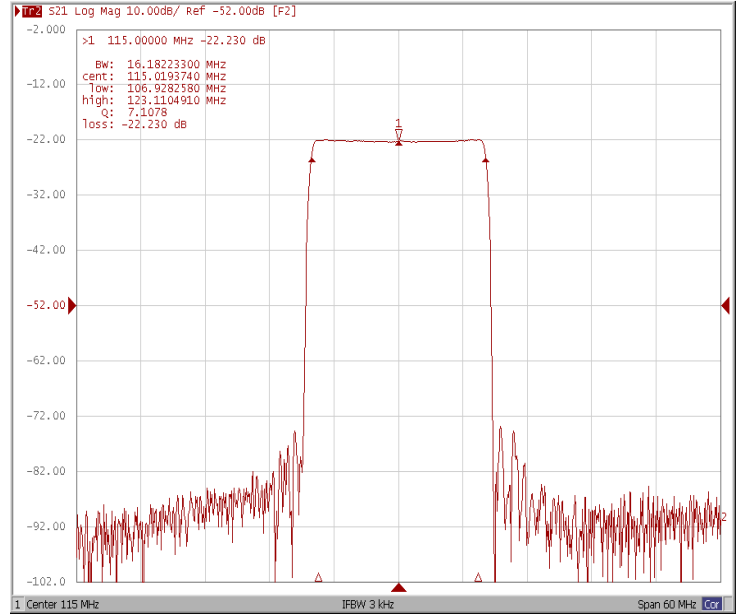
Test Fixture & Values	
Input	L1 = 33 nH
Output	L2 = 33 nH, C1 = 20 pF
Source/Load Impedance	50 Ω

Frequency Response

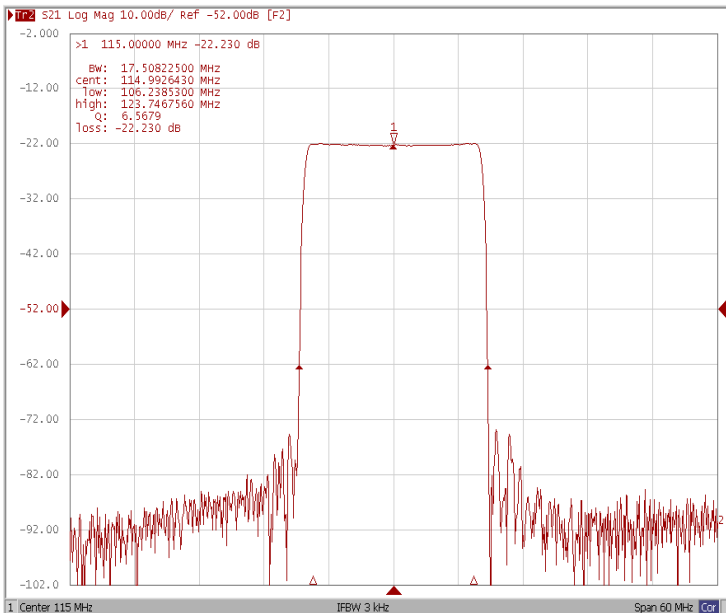
Bandwidth at -1.0 dB



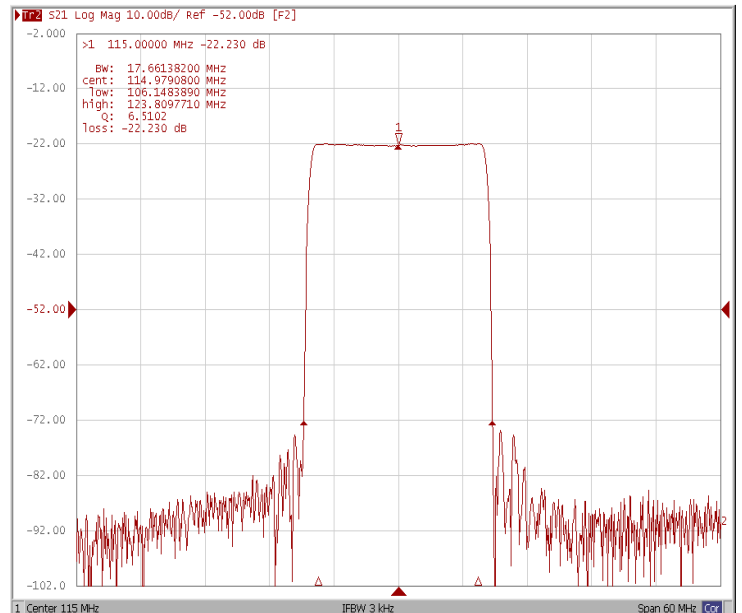
Bandwidth at -3.0 dB



Bandwidth at -40.0 dB

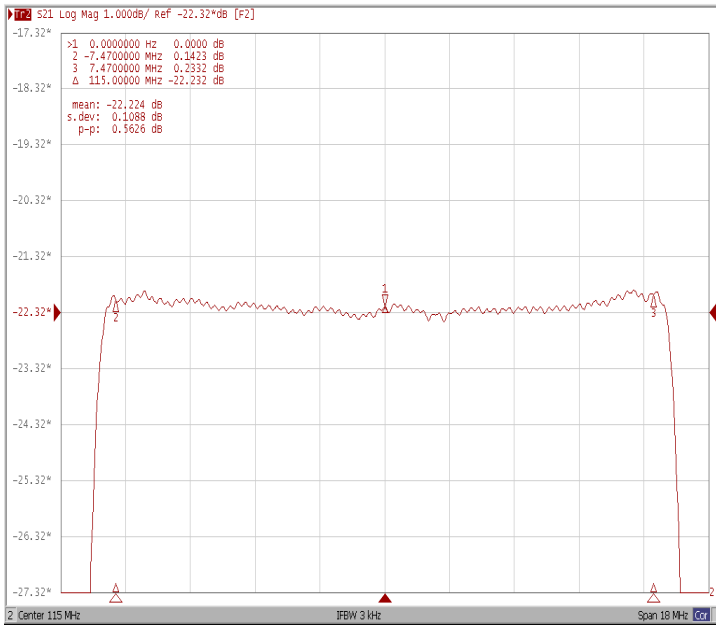


Bandwidth at -50.0 dB

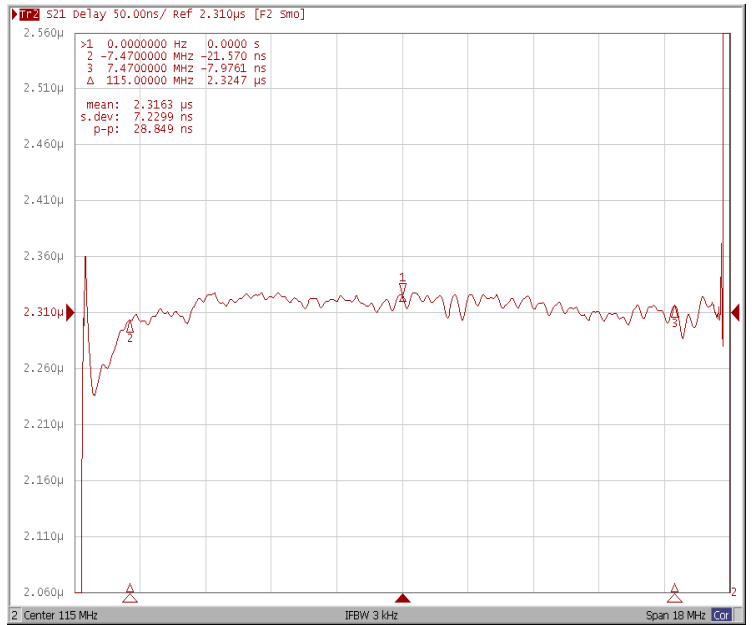


Frequency Response

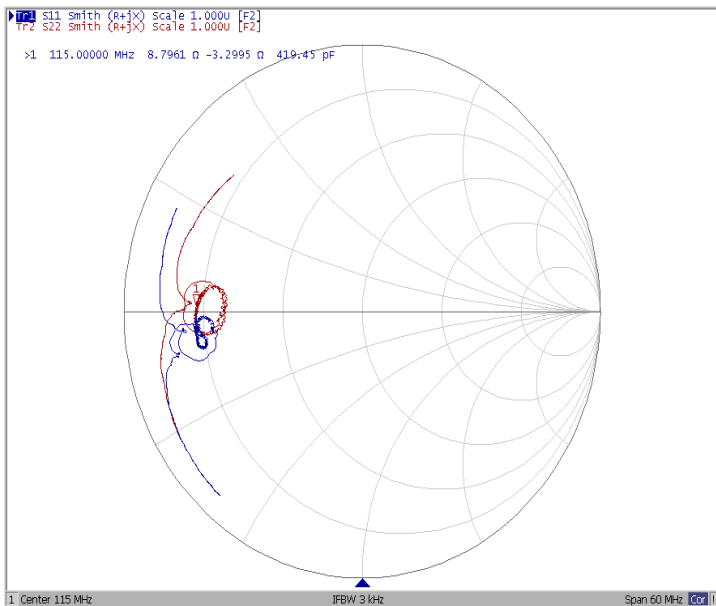
Ripple Variation $F_{o\pm 7.47}$ MHz



Group Delay Variation $F_{o\pm 7.47}$ MHz



Smith Chart



VSWR

