

## Maximum Ratings

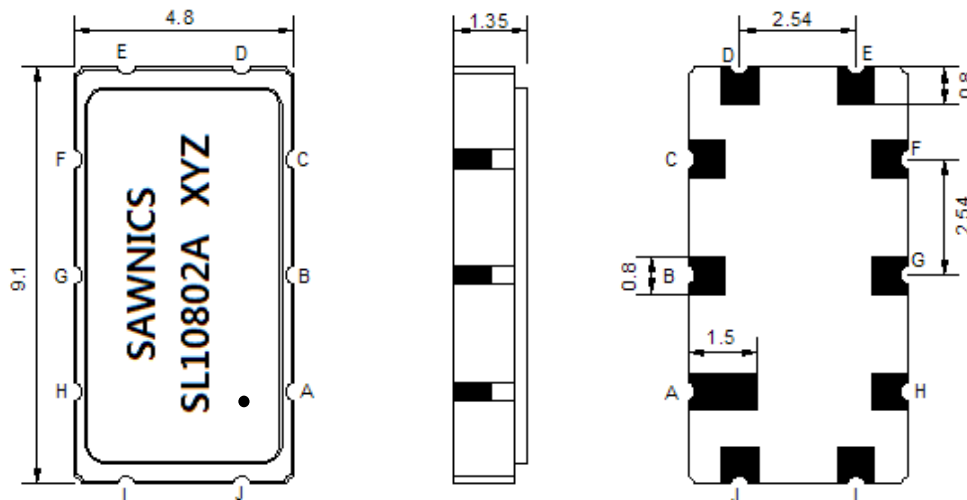
Parameters Description	Unit	Minimum	Typical	Maximum
Operating Temperature Range	°C	-5	-	70
Storage Temperature Range	°C	-40	-	85
Maximum DC Voltage	V	-	-	10
Maximum Input Power	dBm	-	-	10
Source Impedance (single ended) <sup>(1)</sup>	Ω	-	50	-
Load Impedance (single ended) <sup>(1)</sup>	Ω	-	50	-
Package type & size	T			
Length x Width	mm <sup>2</sup>	-	9.1 x 4.8	-
Height	mm	-	-	1.5

## Electrical Specification

Parameters Description	Unit	Minimum	Typical	Maximum
Center Frequency (Fo)	MHz	-	108.40	-
Insertion Loss at Fo	dB	-	11.60	14.00
Temperature Coefficient	ppm/°C	-	-20	-
Group Delay Variation at Fo±0.9MHz	nsec	-	10	40
Absolute Delay at Fo	usec	-	0.89	-
Passband Ripple at Fo±0.9MHz	dB	-	0.20	0.70
Bandwidth at -1dB	MHz	2.00	3.20	-
Bandwidth at -3dB	MHz	-	4.05	-
Bandwidth at -40dB	MHz	-	7.10	8.00
Ultimate Rejection	dB	45	50	-

**Notes :** (1) With Matching Network (Ref. Testing Environment Circuit as shown below).  
Those impedances could be modified with different impedance values and/or structures, if necessary.

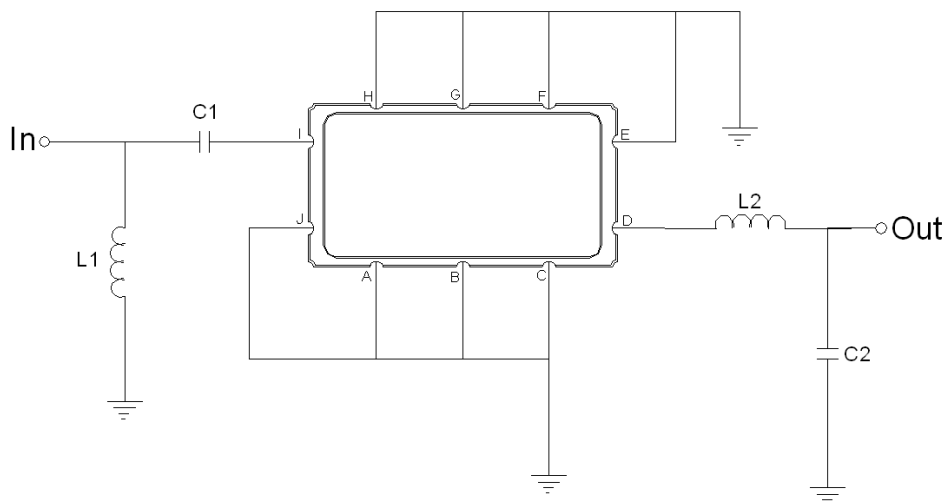
## Package Dimensions



- ① SAWNICS: Brand
- ② SL10802A: Model Name
- ③ X : Date Code (Year)
- ④ Y : Date Code (Month)
- ⑤ Z : Date Code (Date)
- : Index Dot

Pin Description	
A, B, C, E, F, G, H, J	Ground
I	Input
D	Output

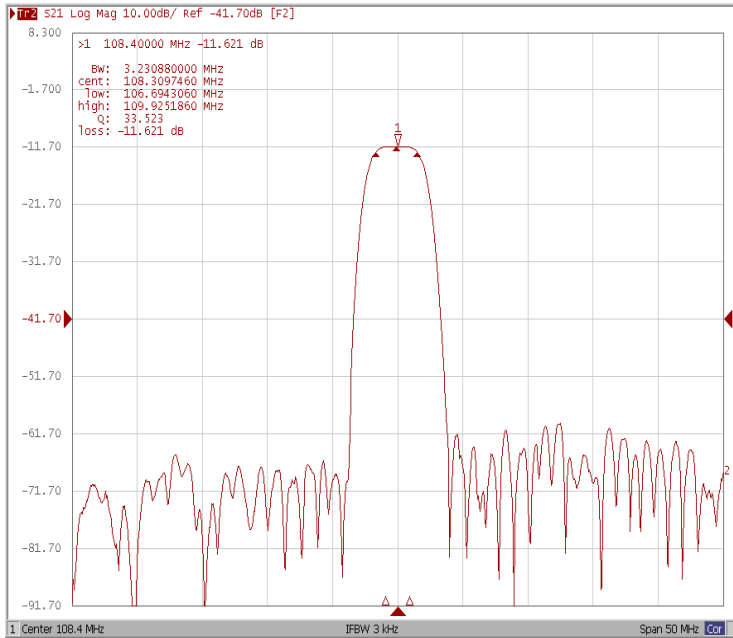
## Testing Environment



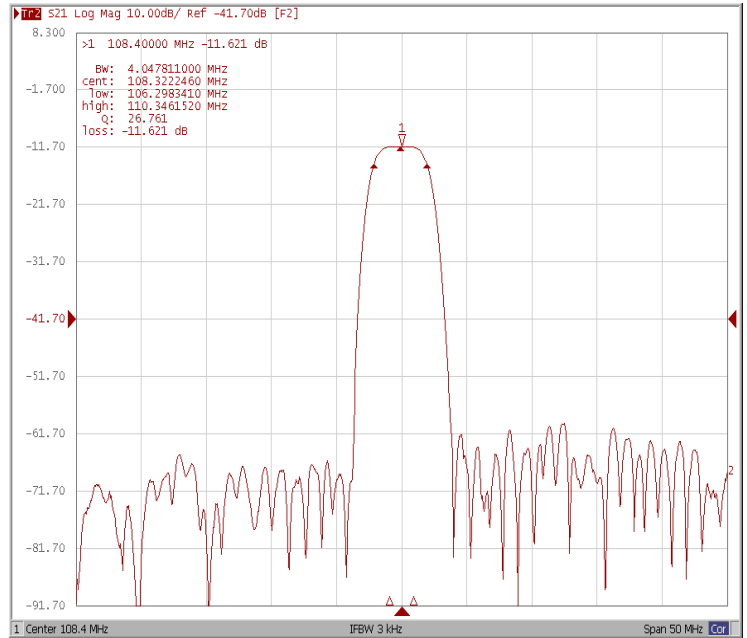
Test Fixture & Values	
Input	L1 = 27 nH , C1 = 200 pF
Output	L2 = 39 nH, C2 = 68 pF
Source/Load Impedance	50 $\Omega$

## Frequency Response

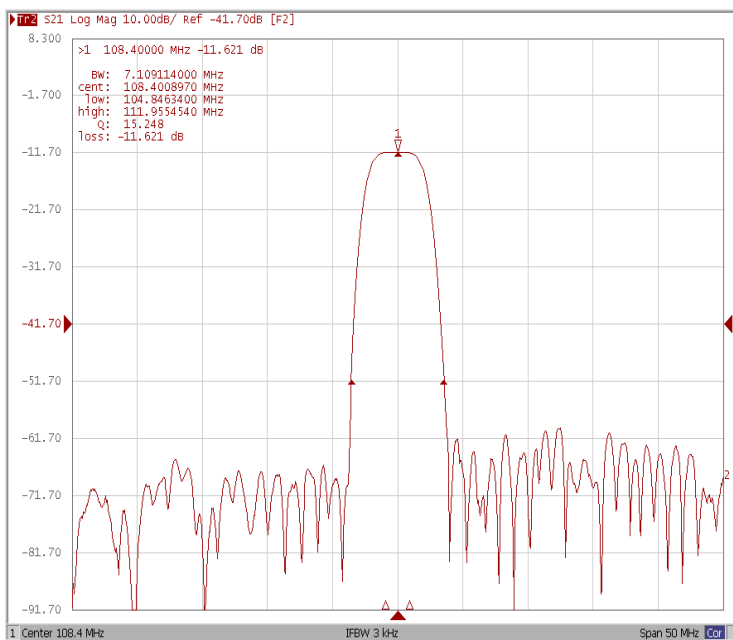
**Bandwidth at -1.0 dB**



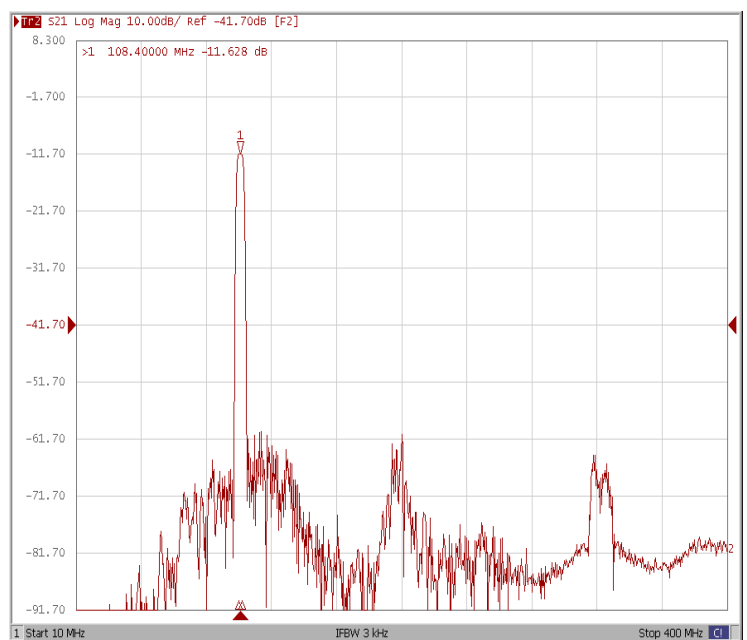
**Bandwidth at -3.0 dB**



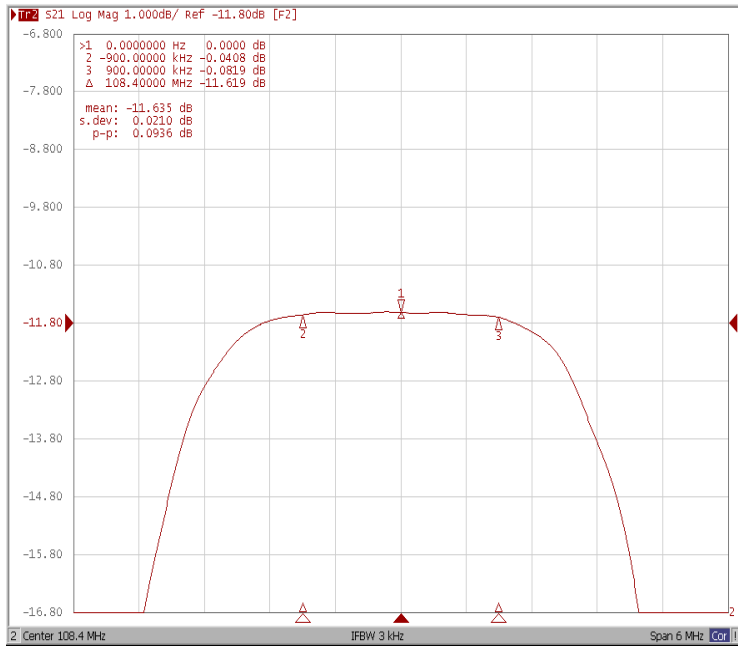
**Bandwidth at -40.0 dB**



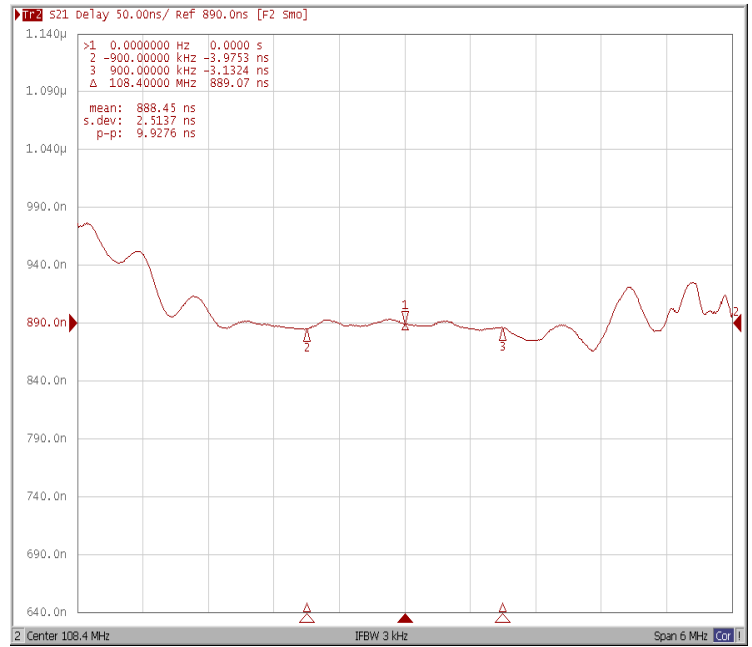
**WIDE**



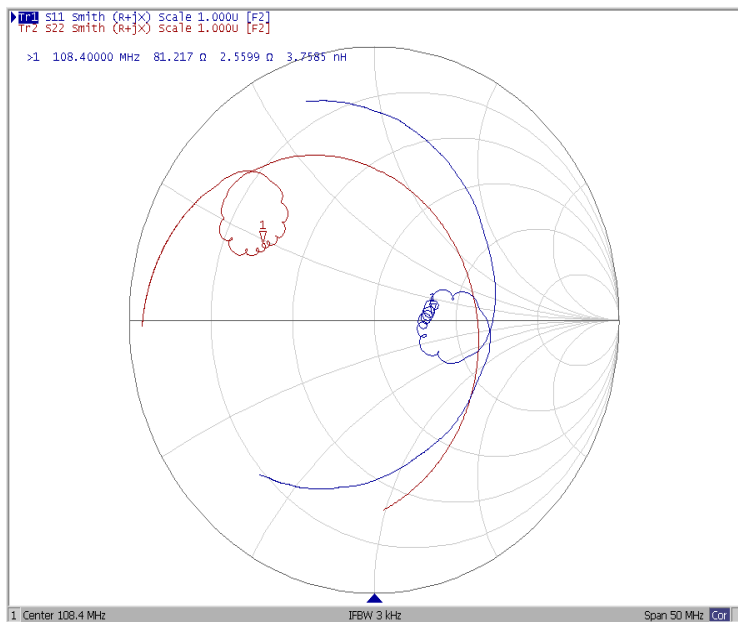
Ripple Variation Fo±0.9MHz



Group Delay Variation Fo±0.9MHz



Smith



SWR

