

A. MAXIMUM RATING:

1. Operating temperature range: -55°C to 125°C
2. Storage temperature range: -55°C to 125°C
3. Input Power Level : 10 dBm
4. Maximum DC Voltage : 10V

RoHS Compliant
Lead free
Lead-free soldering

Electrostatic Sensitive Device

B. Characteristics :

1. Ambient Temperature: 25 °

Item	Unit	Min.	Type.	Max.
Center frequency, Fc	MHz	293.9	294.2	294.5
Insertion Loss, IL	dB	-	18.6	20.0
1dB Band Width	MHz	20.5	22	
40dB Band Width	MHz		28.0	28.5
Amplitude Ripple Fc+/-9.0MHz	dB	-	0.5	1.0
Group Delay Ripple Fc+/-9.0MHz	ns	-	45	200
Absolute Group Delay at Fc	us	-	0.6	1.6
Attenuation (Reference level from minimum Insertion loss)				
Fc +/- 15 MHz	dB	39	45	-
Fc +/- 31 MHz	dB	45	50	-
Temperature Coefficient	ppm/°C	-	-23	-
Source Impedance	Ohm	-	50	-
Load Impedance	Ohm	-	50	-

C. Frequency Characteristics :

(1) Wide band Response:(span 150MHz)

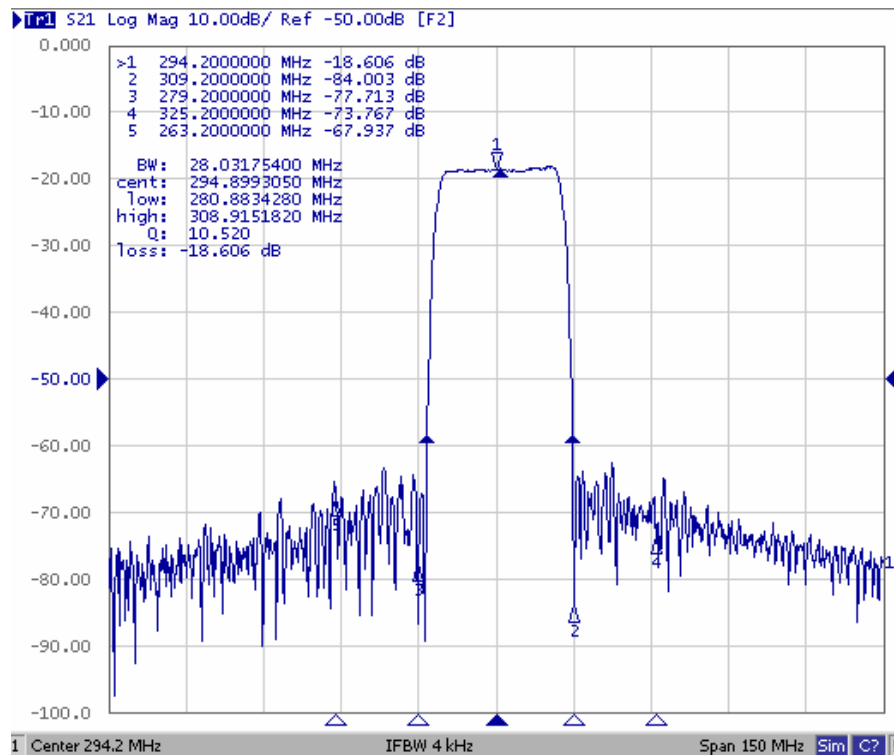


Fig1. Horizontal: 15MHz/Div Vertical: 10dB/Div

(2) Pass band Response and Group Time Delay response:

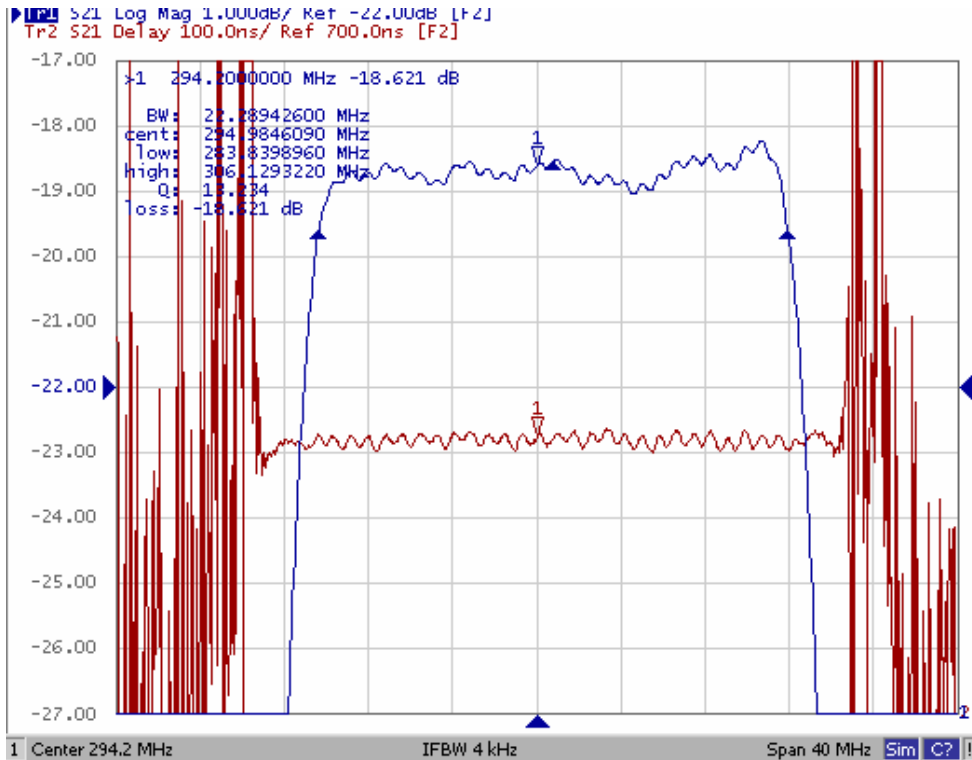
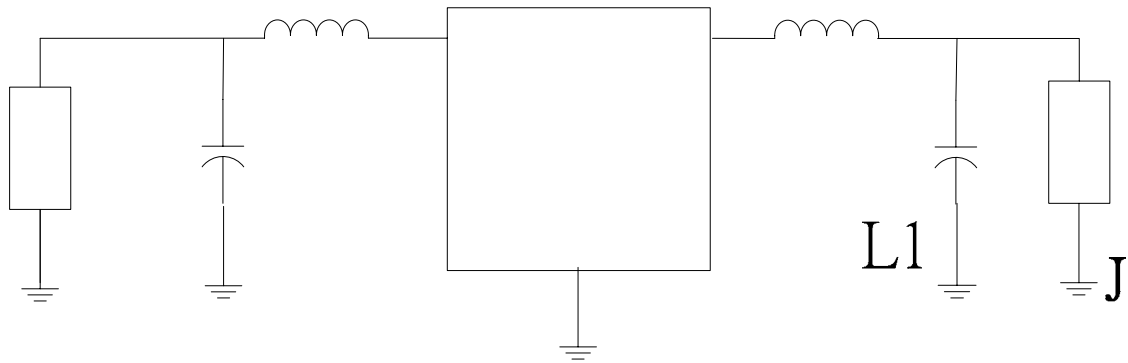


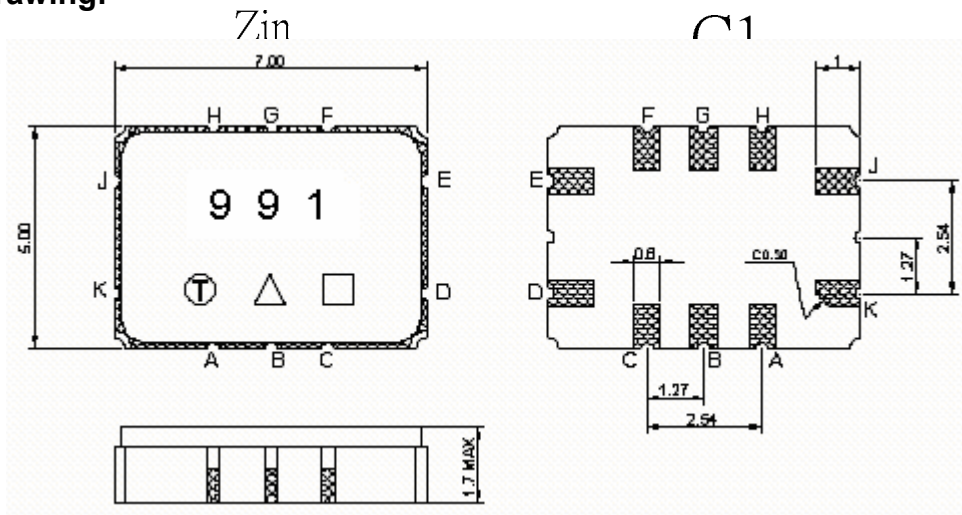
Fig2. Horizontal: 4MHz/Div Vertical: 1dB/Div
Vertical: 100ns/Div

D. Matching Circuit:



$L1=24nH$ $L2=27nH$ $C1=22pF$ $C2=15pF$

E. Outline Drawing:



Pin J –RF input

Pin K –RF input ground

Pin D –RF output

Pin E –RF output ground

Pin A,B,C,F,G,H - Ground

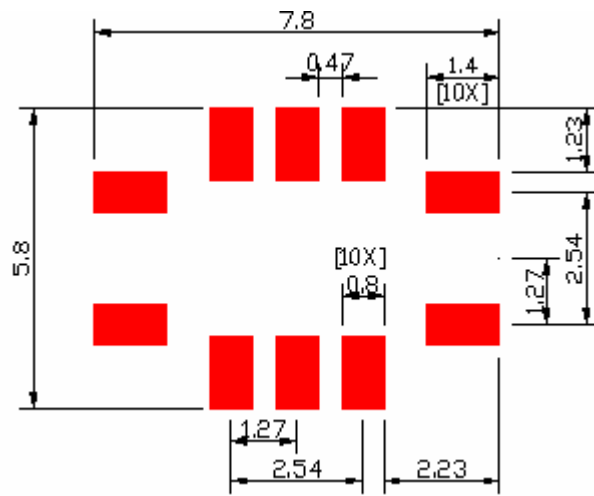
□ : Week Code (Follow the table from planner each year)

Unit : mm

△ : Product / Year Code

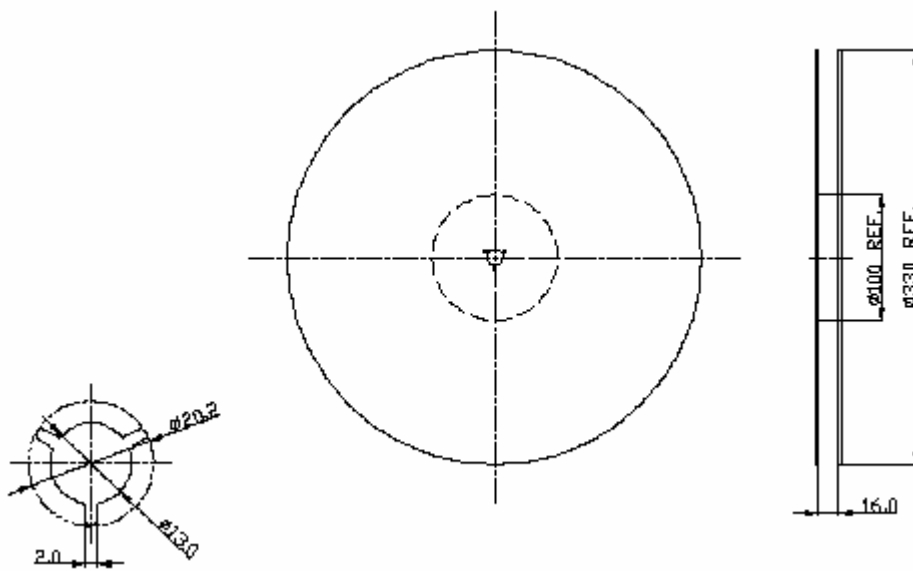
Year	2009 2013	2010 2014	2011 2015	2012 2016
Product Code	B	b	<u>B</u>	<u>b</u>

F. PCB Footprint:

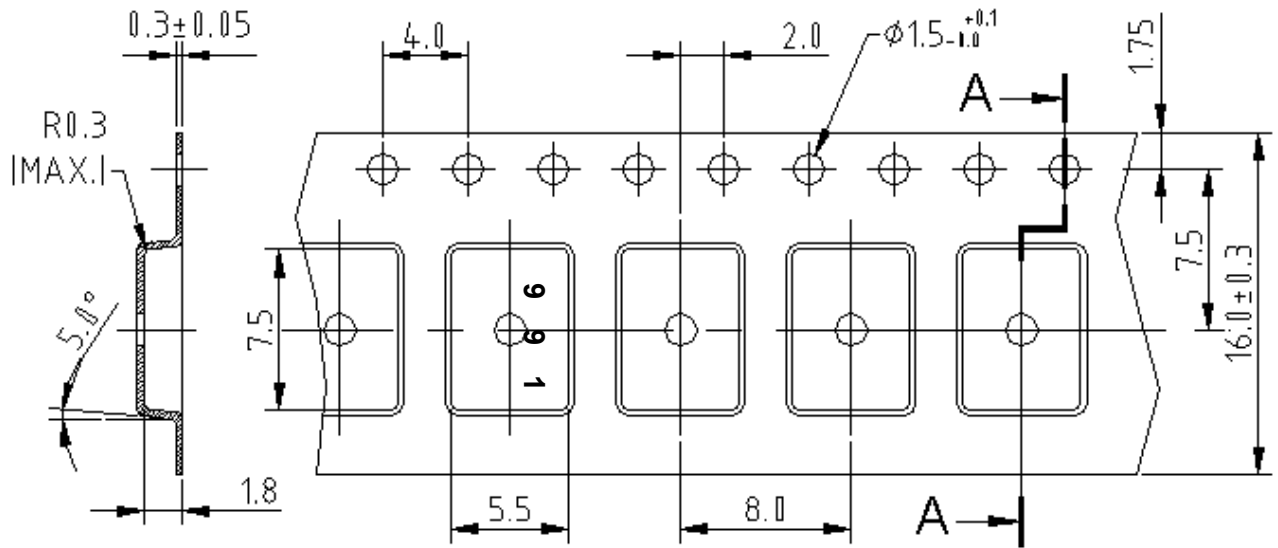


G. PACKING:

1. REEL DIMENSION



2. TAPE DIMENSION



H. RECOMMENDED REFLOW PROFILE:

