

SAW Filter 433.92 MHz

A. MAXIMUM RATING:

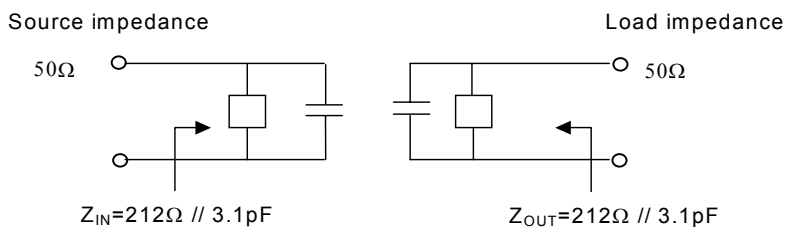
1. Input Power Level: 10 dBm
2. DC voltage: 12 V
3. Operating Temperature: -40°C to +85°C
4. Storage Temperature: -40°C to +85°C

B. ELECTRICAL CHARACTERISTICS:

Item	Min.	Typ.	Max.	Note
Center frequency F_c (MHz)	433.8	433.92	434.12	1
Minimum I.L. (433.8~434.12 MHz) (dB) IL_{min}	-	3.0	5.0	
Pass band (relative to IL_{min})				
433.76~434.08 MHz (dB)	-	-	2.0	1
433.74~434.10 MHz (dB)	-	-	3.0	
433.68~434.16 MHz (dB)	-	-	6.0	
Pass bandwidth (relative to IL_{min}) BW_3 (KHz)	500	650	750	
Attenuation:(relative to IL_{min}) (dB)				
414~428 MHz (dB)	40	43	-	1
428~432.84 MHz (dB)	15	26	-	
434.92~442 MHz (dB)	10	16	-	
442~550 MHz (dB)	33	38	-	
Impedance at F_c ; Input $Z_{IN}=R_{IN}/C_{IN}$ Output $Z_{OUT}=R_{OUT}/C_{OUT}$	212Ω // 3.1 pF 212Ω // 3.1 pF			2
Turnover To (deg.C)	25 typ.			

Note1. The standard definitions is in JIS C 6703

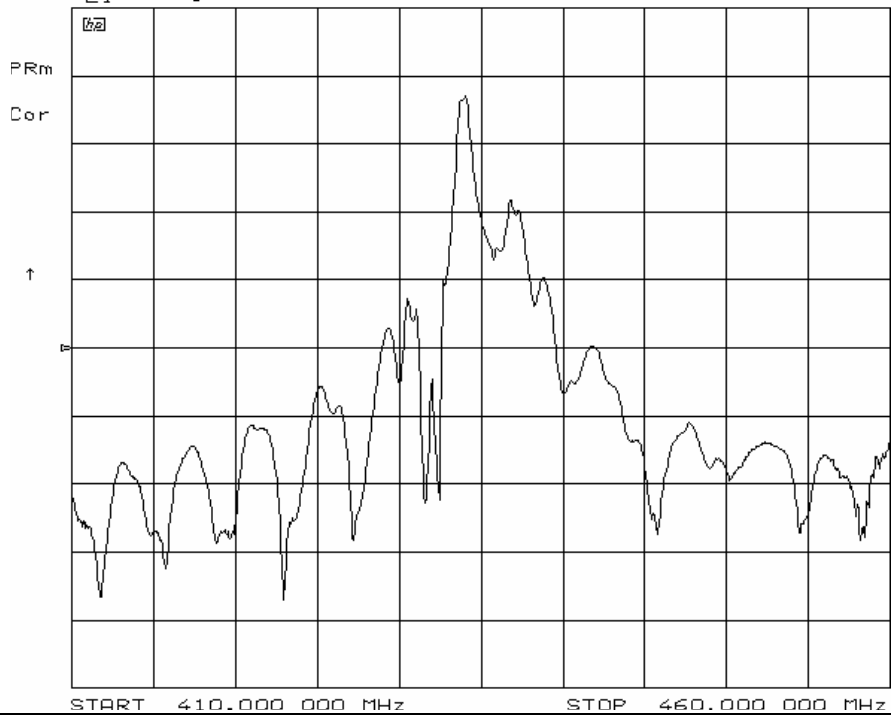
Note2.



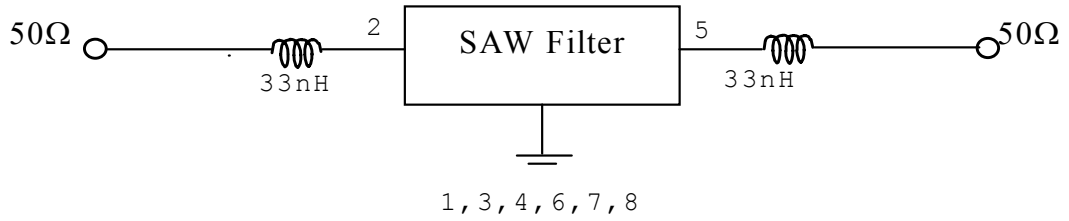
CH1 S₂₁ log MAG 5 dB/ REF -22 dB 1:-2.9404 dB



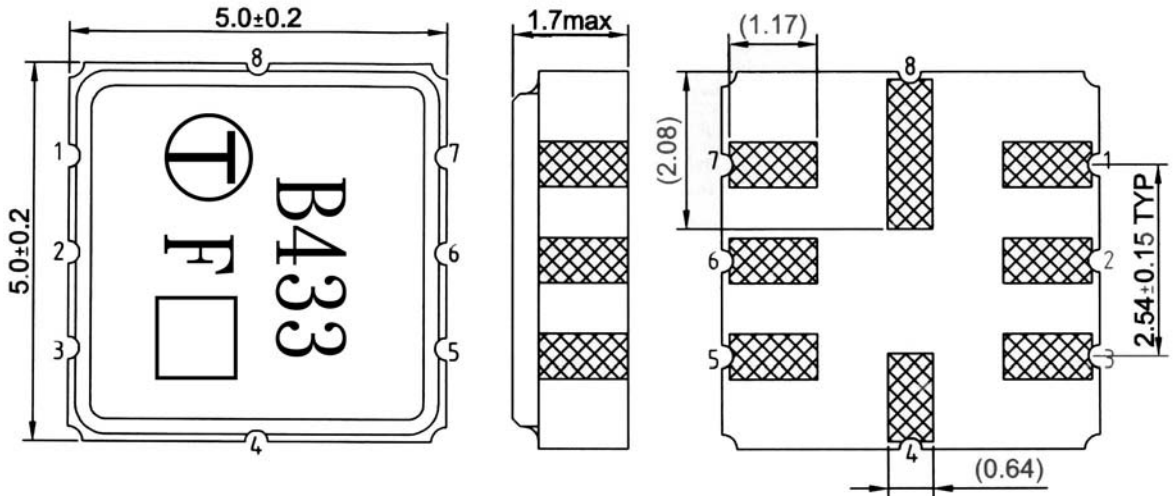
CH1 S₂₁ log MAG 10 dB/ REF -40 dB



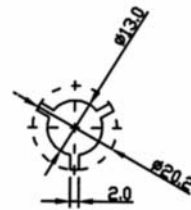
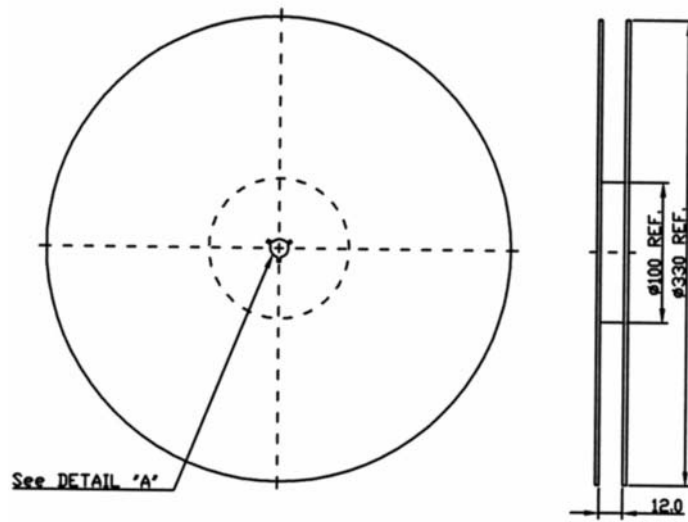
HP Network analyzer



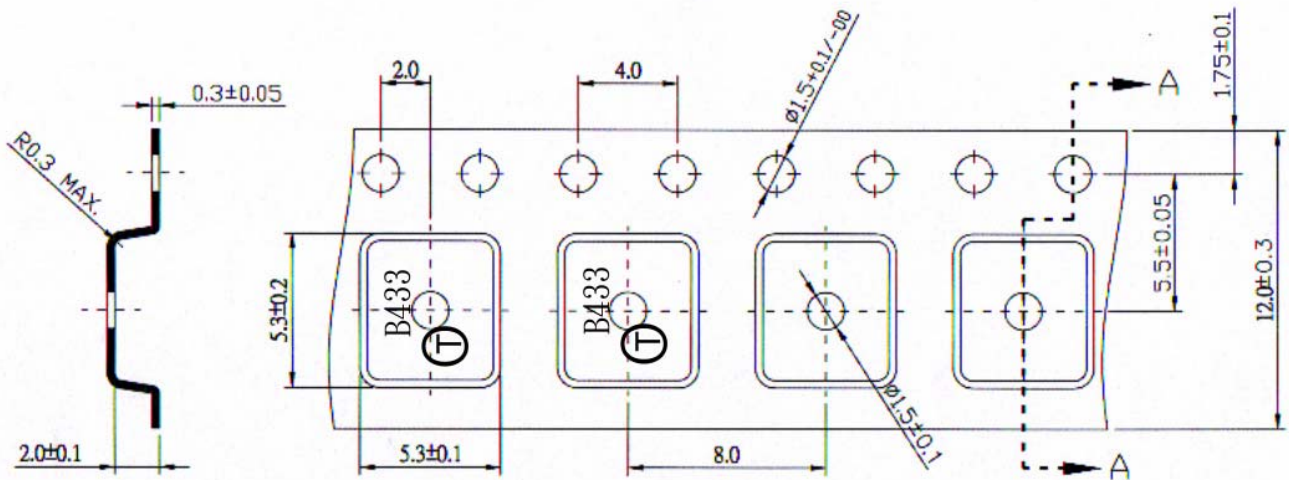
E. OUTLINE DRAWING:



- #1 : Input Ground
 - #2 : Input
 - #5 : Output
 - #6 : Output Ground
 - #4、8 : Case Ground
 - #3、7 : to be ground
 - : Date code
- Unit : mm



2.TAPE DIMENSION



Section A-A