

# Rejection filter 192 MHz

## Application:

- broadcasting, retranslating and receiving equipments
- for antenna and cable television

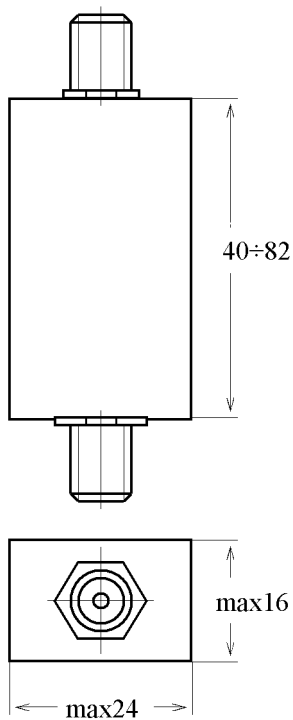
## Measuring conditions:

- $t=25\text{ }^{\circ}\text{C}$
- $R_{\text{source}}=R_{\text{load}}=75\ \Omega$

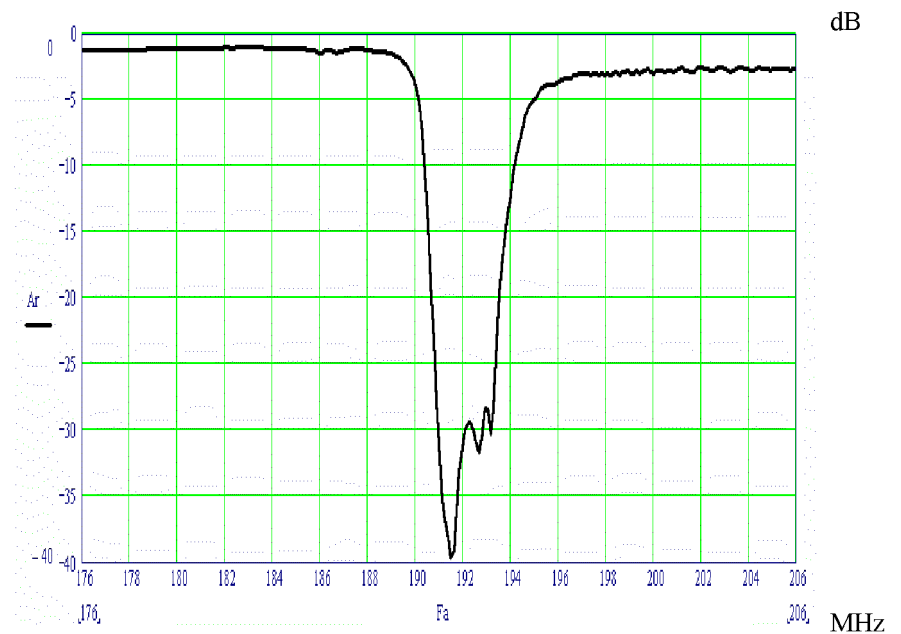
**Metal package: F**

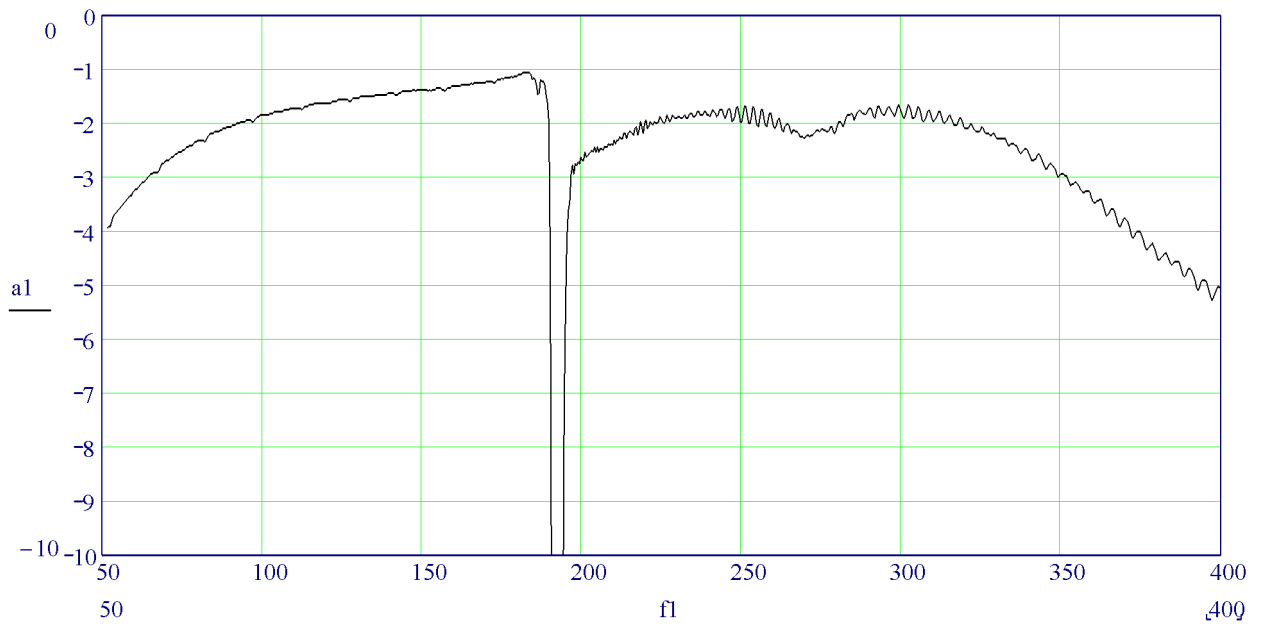
## Main Electrical Parameters

Parameter	Unit	Typ. value
Insertion loss: 48÷189,5 МГц, 198,0÷230,0 MHz	dB	4,0
Insertion loss : 191,0÷193,0 MHz	dB	28
Temperature coefficient of frequency	ppm	-70



## Frequency response





**Manufacturer: "BUTIS" Ltd.**  
121357, Russia, Moscow, Vereyskaya , 29  
Tel/fax (495) 411-96-08; 411-96-09